

Communal sections with the largest modelled change in population between 01 Mar 24 - 28 Feb 25

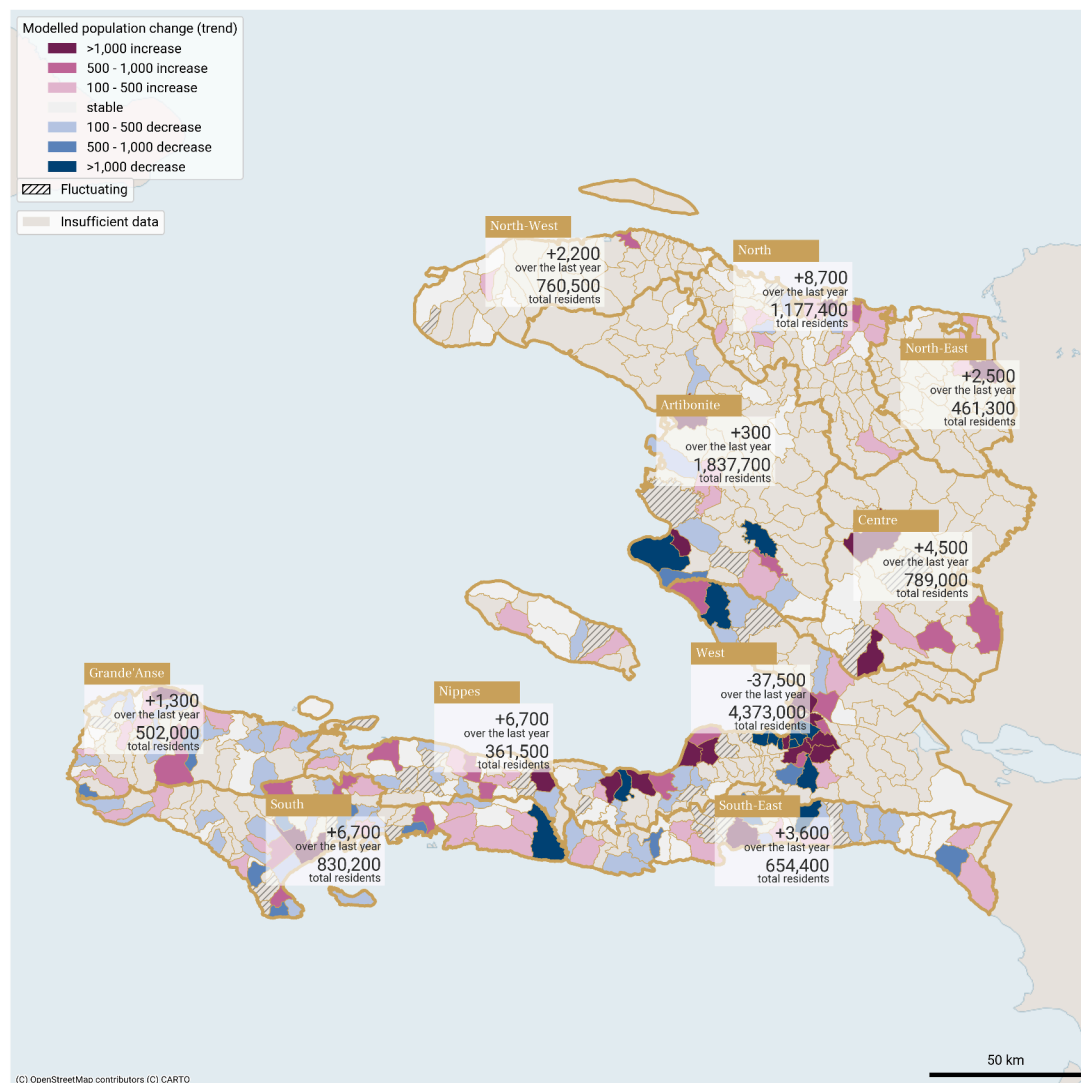
Department	Communal section	Population estimate Feb 2025	Trend type in the last 12 months	Modelled change over the last 12 months
West	1re Section St Martin	494,900	Decreasing	-14,270
West	1re Section Turgeau	505,500	Decreasing	-12,820
West	5e Section Bellevue Chardonniere	267,400	Increasing	7,990
West	3e Section Martissant	283,400	Increasing	6,440
West	3e Section Bellevue	118,700	Increasing	5,380

Key observations for the period 01 Mar 24 - 28 Feb 25

- Of the communal sections for which we can provide monthly population estimates (273), 8.1% (22) exhibited large overall increases (> 1,000) while 4.8% (13) saw large overall decreases (< -1,000).
 - The largest changes were within the Port-au-Prince Metropolitan Area (ZMPAP), likely driven by insecurity due to gang violence, with the largest decreases in 1re Section St. Martin and in 1re Section Turgeau (suggesting significant insecurity), the largest increase in 5e Section Bellevue Chardonniere, and high levels of mobility between these three sections.
 - Outside West, there were large increases in 1re Section Bourdet (Les Cayes) in South, as well as 2e Section Haut du Cap (Cap Haitien) in North and 6eme Section Charrette in Artibonite.
- 10.6% (29) of communal sections with recent estimates had fluctuating populations
 - Fluctuations can show changes in population likely to correspond to displacements and returns following armed attacks (e.g. in Artibonite), or indicate a data issue where there are very large and sudden changes (e.g. in Nippes and North-West).
- At the department level, **West** saw the largest estimated change, shrinking by about 37,500 people, mostly occurring in the first half of the study period, then levelling out.
- Conversely, **Centre**, **North**, and **North-East** exhibited relatively steady growth. Elsewhere, **South**, **South-East**, **Nippes**, all showed overall growth, with steady increases early in the reporting period before leveling off, or following a downward trend, in the latter half.

For more information on the indicators presented, how to use this report and data sources, please see the last page.

Modelled population trends (communal sections) and change estimates (departments) between 1 Mar 2024 and 28 Feb 2025

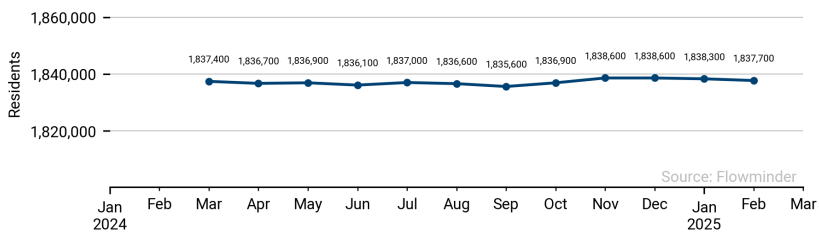


(C) OpenStreetMap contributors (C) CARTO

These population estimates come from Call Detail Records (CDRs) (mobile phone usage data) and other datasets for reference and adjustments. The estimates provided are not survey estimates, key informant estimates or field observations. If you are unfamiliar with this data source please read our documentation which can be found at www.flowgeek.org

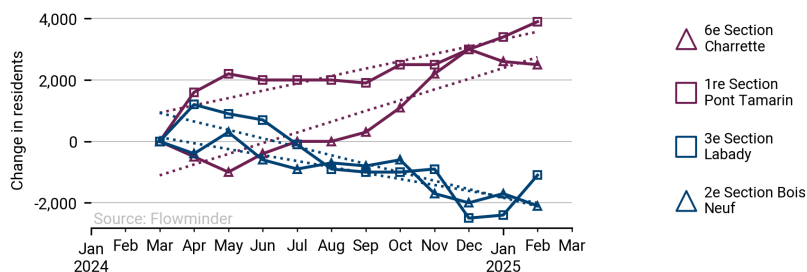
Monthly estimated population in Artibonite (01 Mar 24 - 28 Feb 25)

Sum of all communal sections incl. those with no CDRs

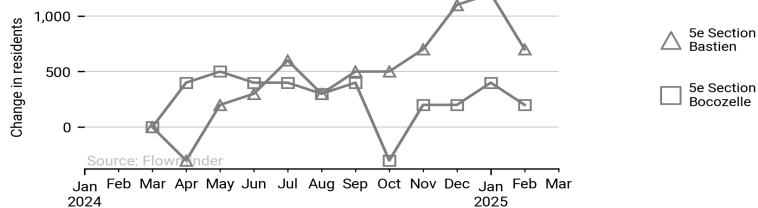


Communal sections in Artibonite with largest modelled change in population (01 Mar 24 - 28 Feb 25)

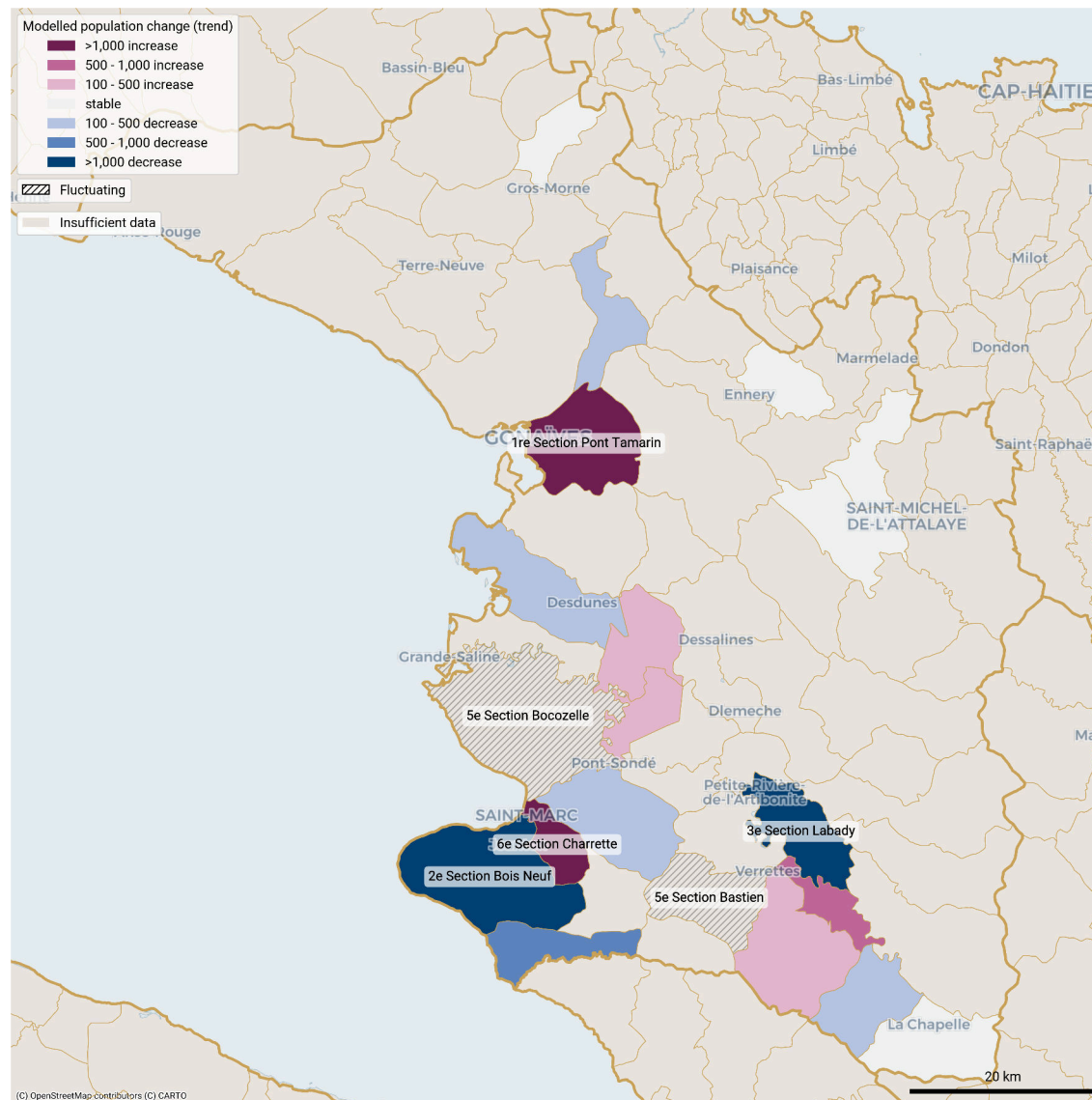
Solid line: estimates. Dotted line: model.



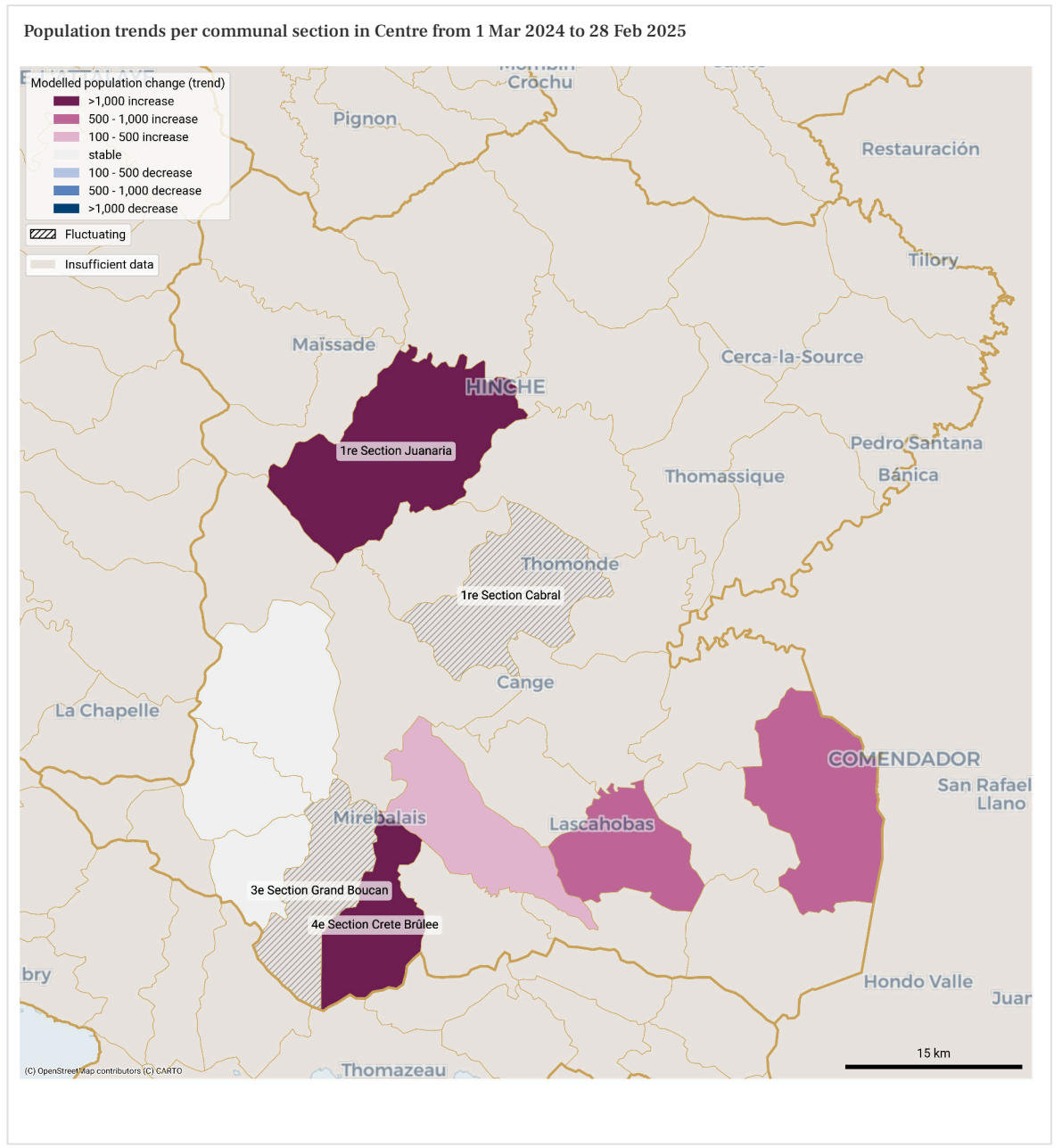
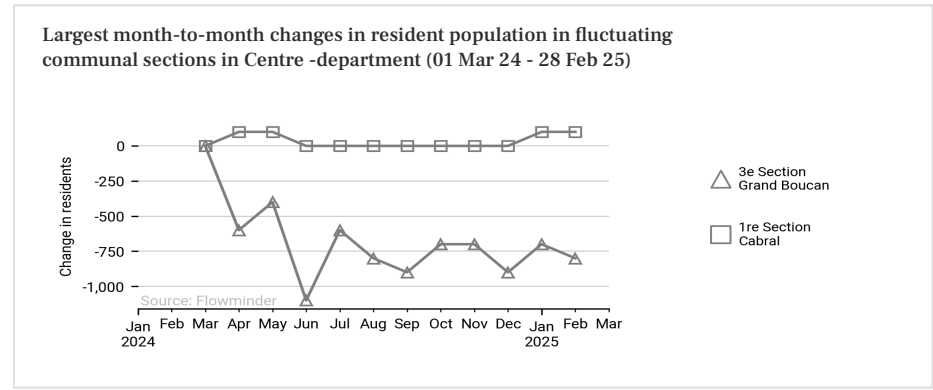
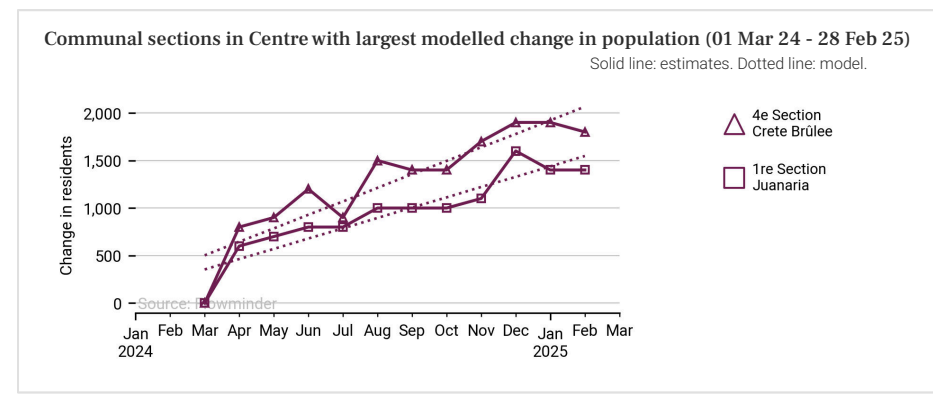
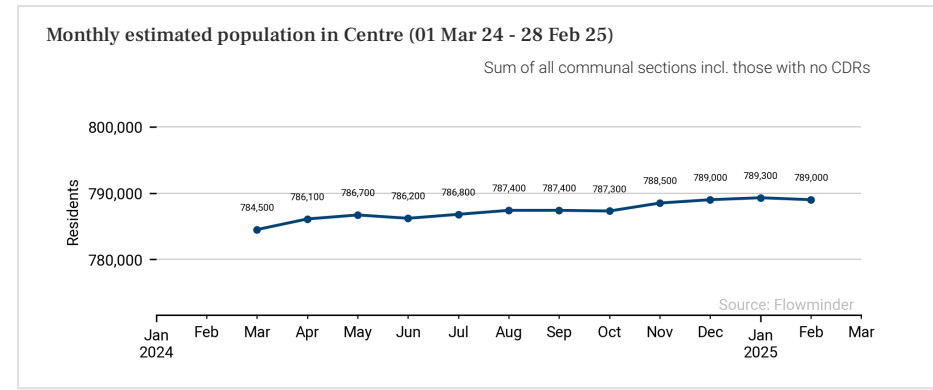
Largest month-to-month changes in resident population in fluctuating communal sections in Artibonite - department (01 Mar 24 - 28 Feb 25)



Population trends per communal section in Artibonite from 1 Mar 2024 to 28 Feb 2025



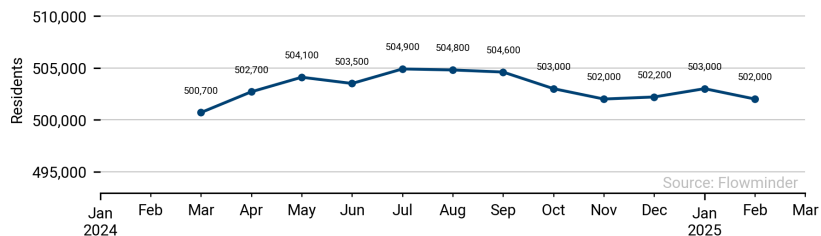
These population estimates come from Call Detail Records (CDRs) (mobile phone usage data) and other datasets for reference and adjustments. The estimates provided are not survey estimates, key informant estimates or field observations. If you are unfamiliar with this data source please read our documentation which can be found at www.flowminder.org



These population estimates come from Call Detail Records (CDRs) (mobile phone usage data) and other datasets for reference and adjustments. The estimates provided are not survey estimates, key informant estimates or field observations. If you are unfamiliar with this data source please read our documentation which can be found at www.flowminder.org

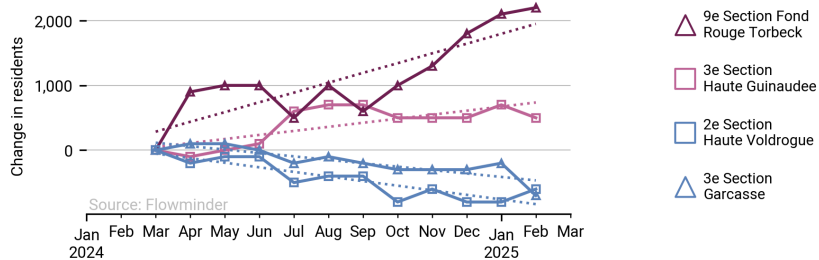
Monthly estimated population in Grande'Anse (01 Mar 24 - 28 Feb 25)

Sum of all communal sections incl. those with no CDRs

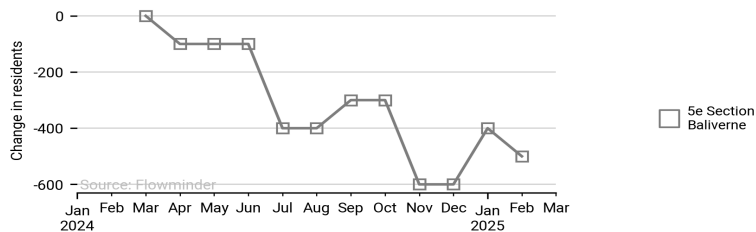


Communal sections in Grande'Anse with largest modelled change in population (01 Mar 24 - 28 Feb 25)

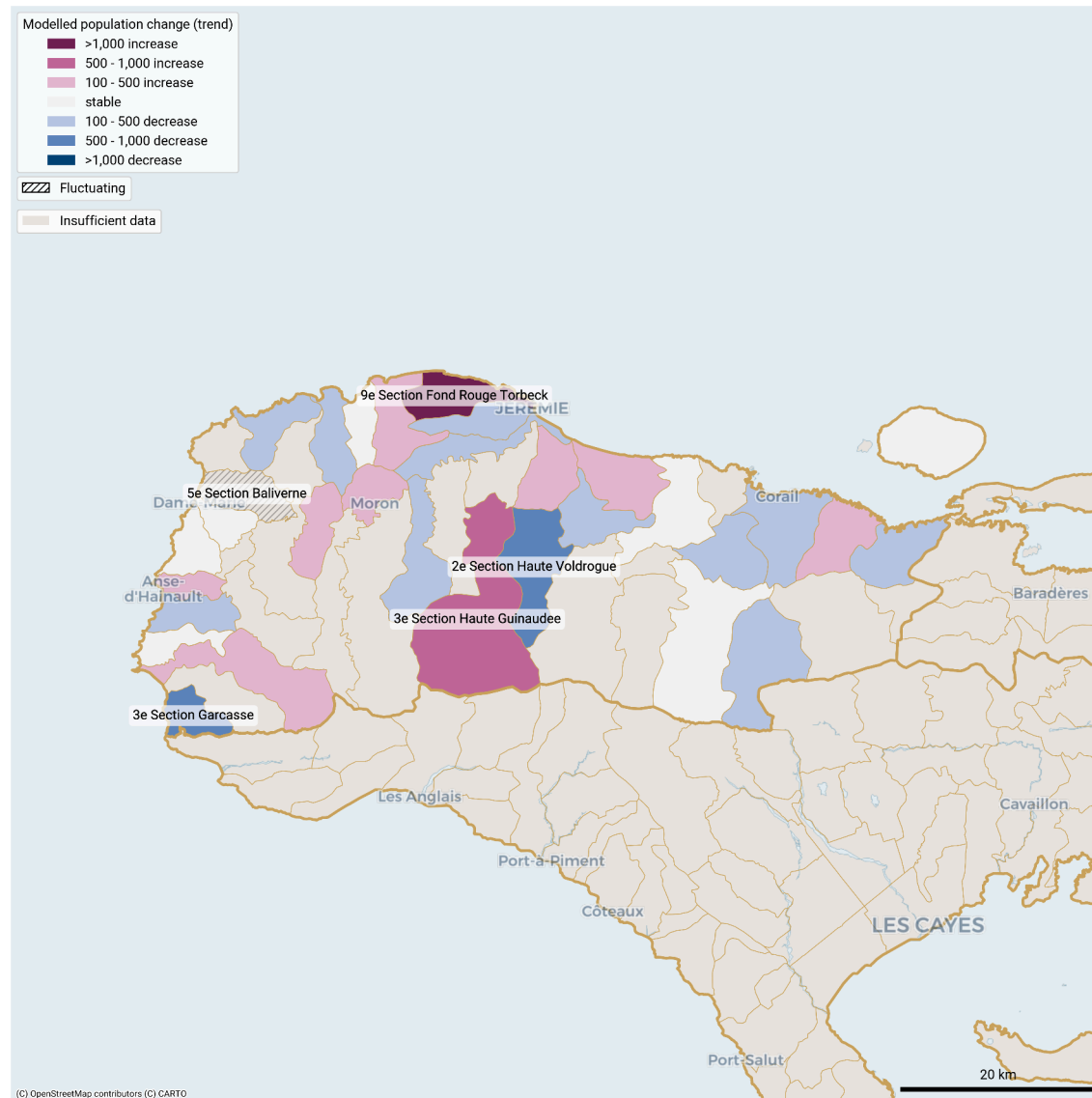
Solid line: estimates. Dotted line: model.



Largest month-to-month changes in resident population in fluctuating communal sections in Grande'Anse -department (01 Mar 24 - 28 Feb 25)



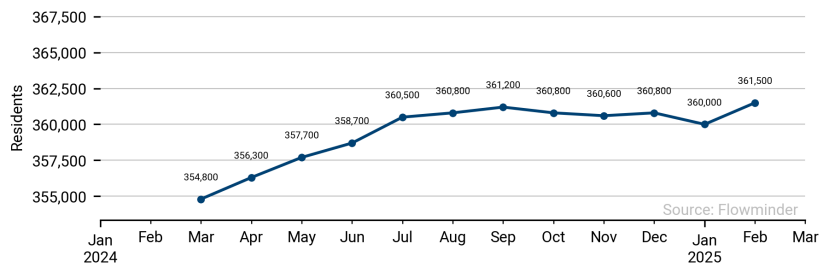
Population trends per communal section in Grande'Anse from 1 Mar 2024 to 28 Feb 2025



These population estimates come from Call Detail Records (CDRs) (mobile phone usage data) and other datasets for reference and adjustments. The estimates provided are not survey estimates, key informant estimates or field observations. If you are unfamiliar with this data source please read our documentation which can be found at www.flowminder.org

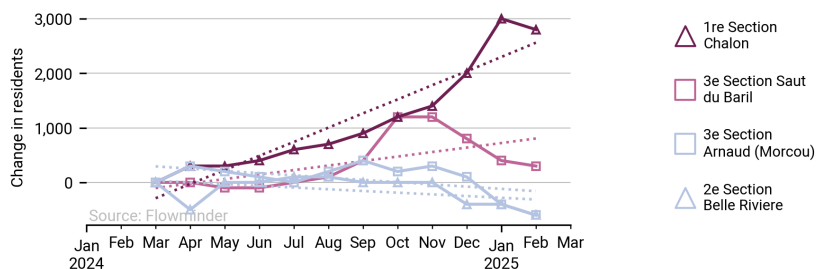
Monthly estimated population in Nippes (01 Mar 24 - 28 Feb 25)

Sum of all communal sections incl. those with no CDRs

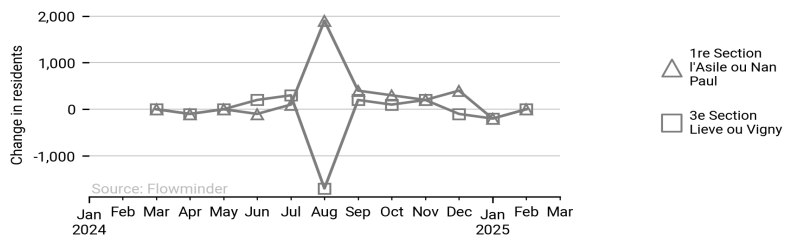


Communal sections in Nippes with largest modelled change in population (01 Mar 24 - 28 Feb 25)

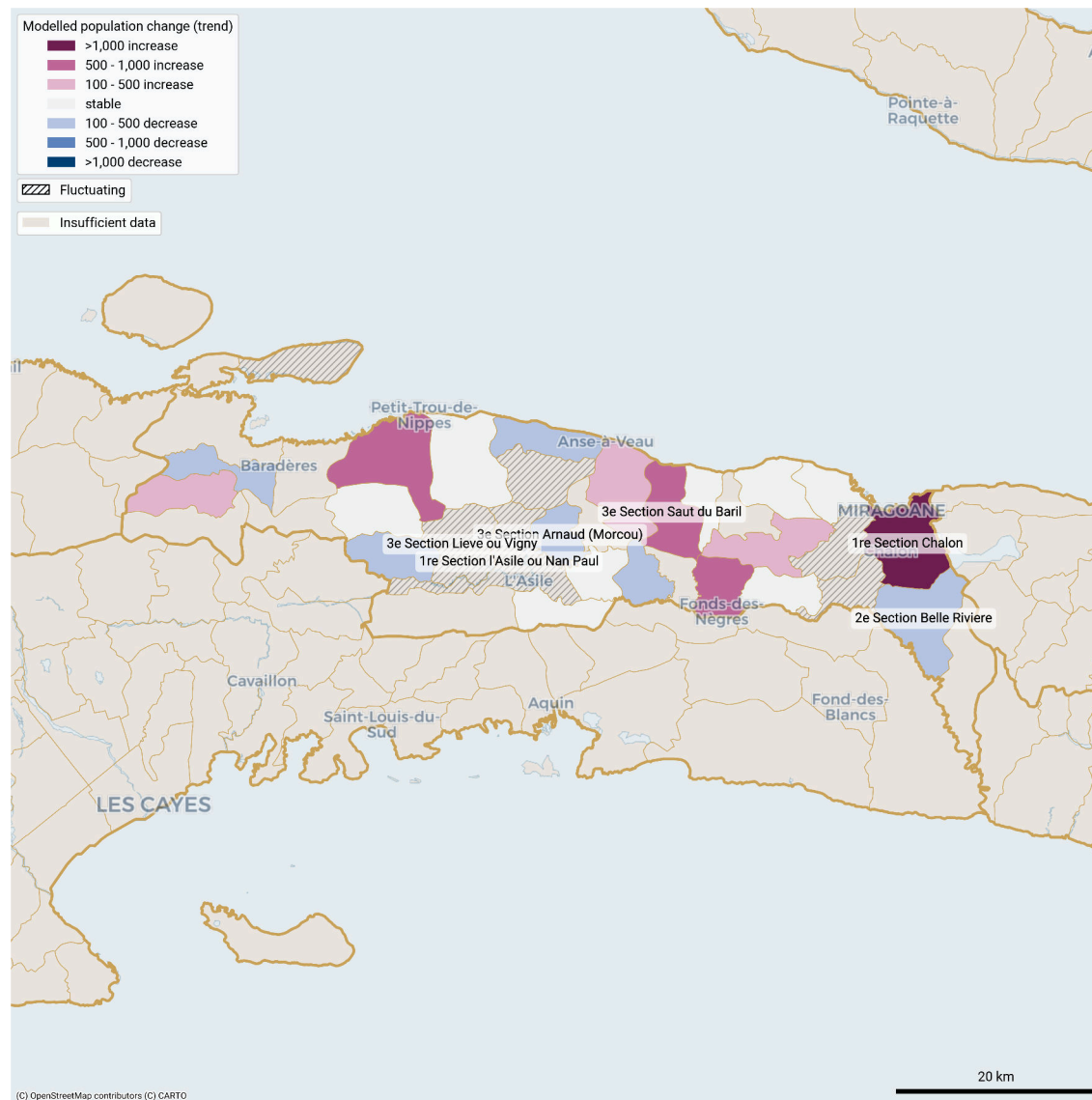
Solid line: estimates. Dotted line: model.



Largest month-to-month changes in resident population in fluctuating communal sections in Nippes -department (01 Mar 24 - 28 Feb 25)



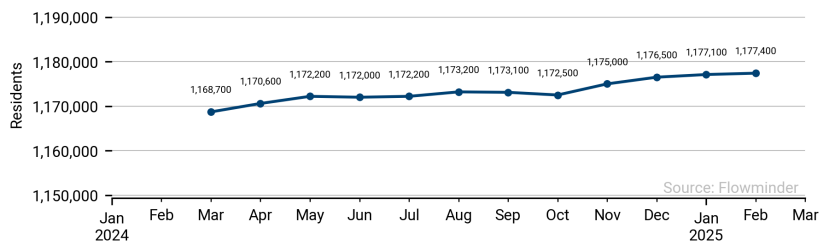
Population trends per communal section in Nippes from 1 Mar 2024 to 28 Feb 2025



These population estimates come from Call Detail Records (CDRs) (mobile phone usage data) and other datasets for reference and adjustments. The estimates provided are not survey estimates, key informant estimates or field observations. If you are unfamiliar with this data source please read our documentation which can be found at www.flowminder.org

Monthly estimated population in North (01 Mar 24 - 28 Feb 25)

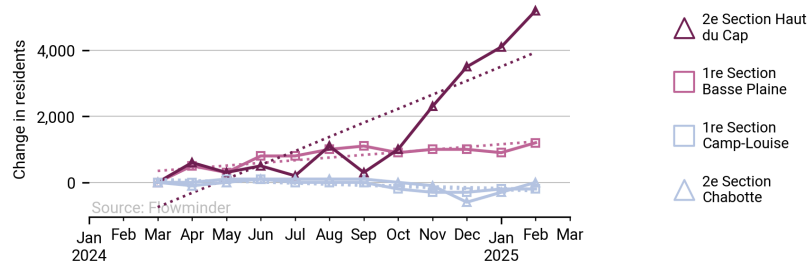
Sum of all communal sections incl. those with no CDRs



Source: Flowminder

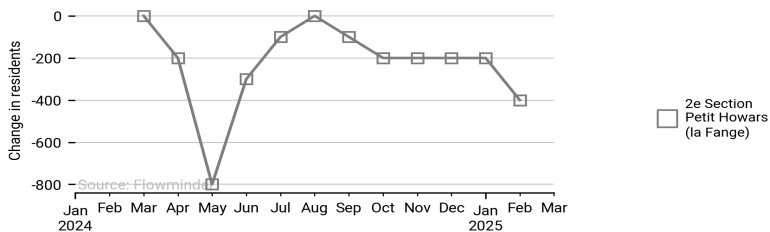
Communal sections in North with largest modelled change in population (01 Mar 24 - 28 Feb 25)

Solid line: estimates. Dotted line: model.



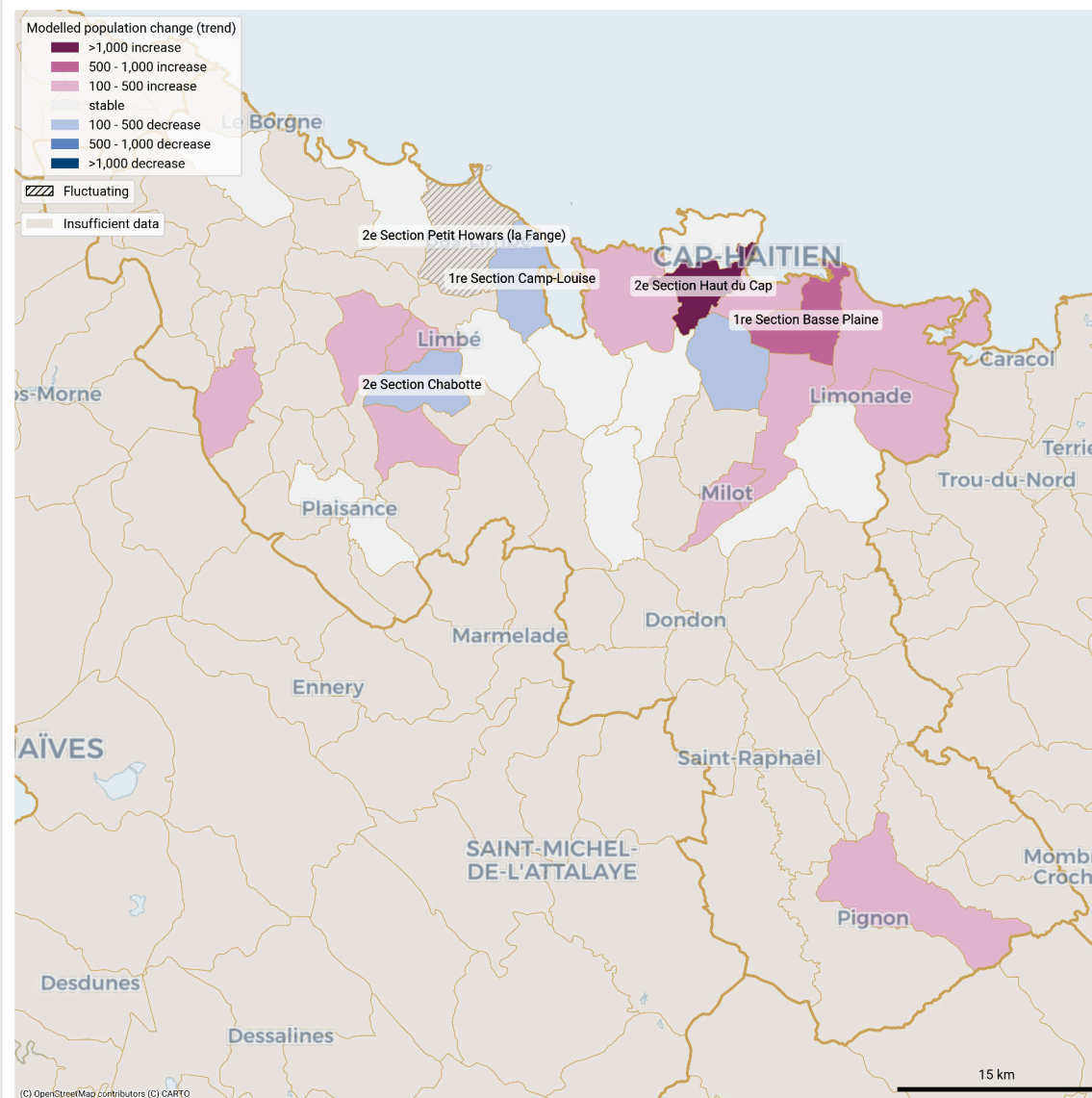
Source: Flowminder

Largest month-to-month changes in resident population in fluctuating communal sections in North -department (01 Mar 24 - 28 Feb 25)



Source: Flowminder

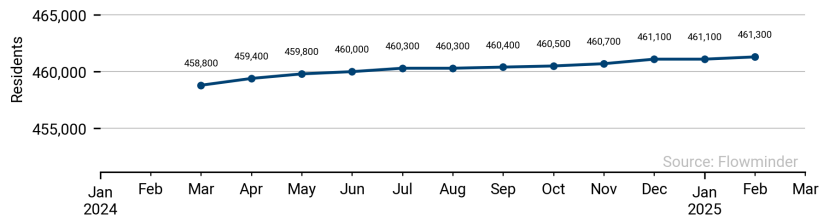
Population trends per communal section in North from 1 Mar 2024 to 28 Feb 2025



These population estimates come from Call Detail Records (CDRs) (mobile phone usage data) and other datasets for reference and adjustments. The estimates provided are not survey estimates, key informant estimates or field observations. If you are unfamiliar with this data source please read our documentation which can be found at www.flowminder.org

Monthly estimated population in North-east (01 Mar 24 - 28 Feb 25)

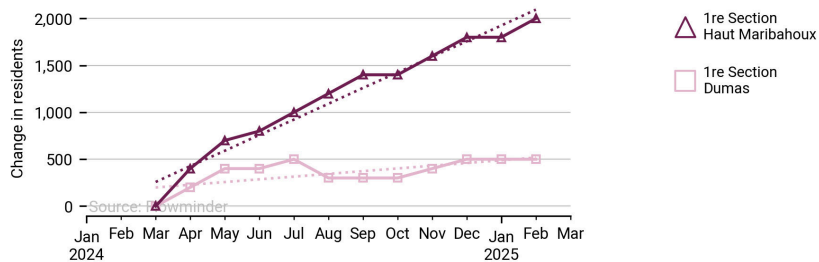
Sum of all communal sections incl. those with no CDRs



Source: Flowminder

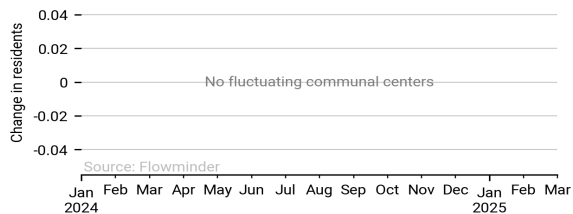
Communal sections in North-east with largest modelled change in population (01 Mar 24 - 28 Feb 25)

Solid line: estimates. Dotted line: model.



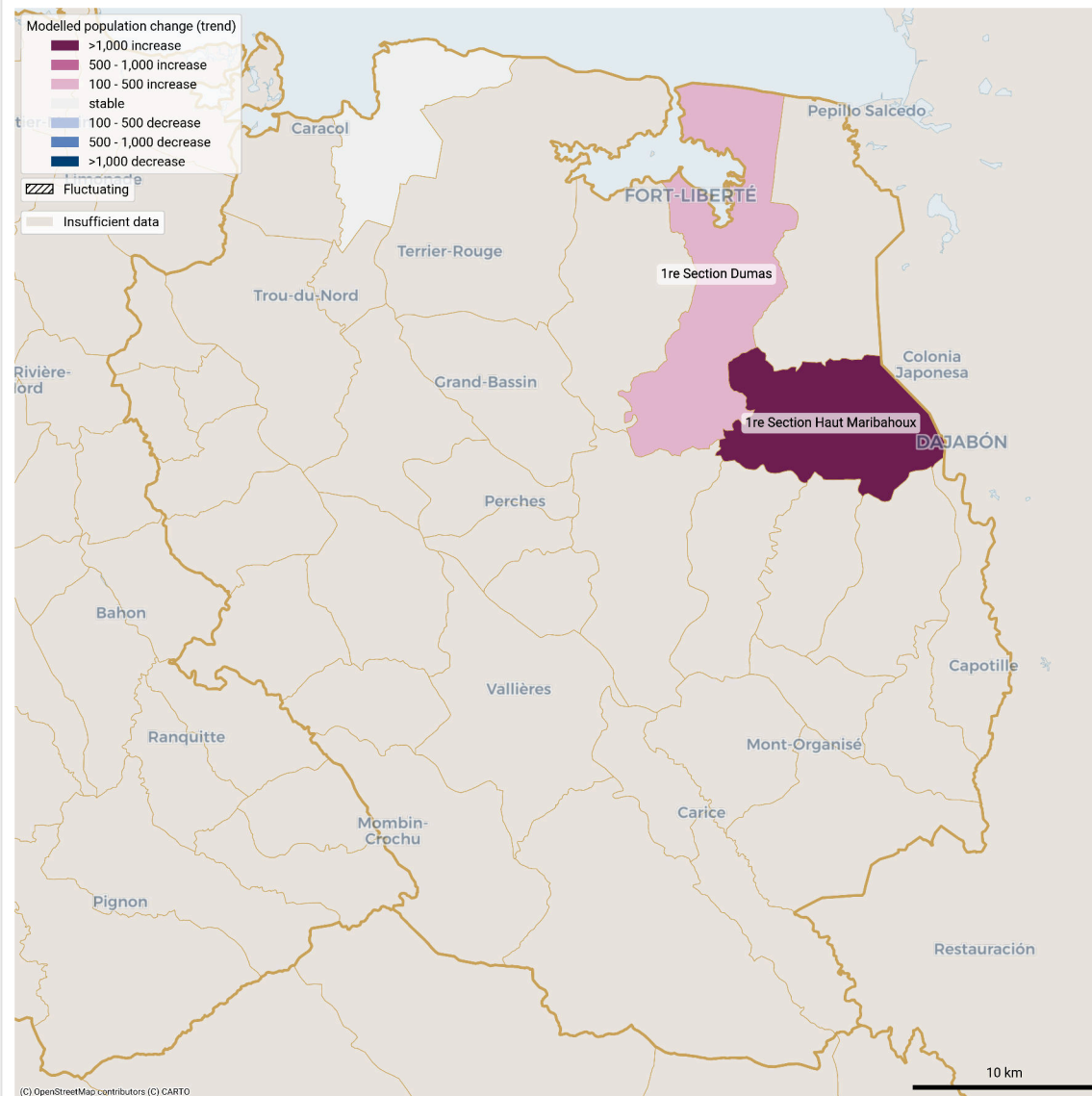
Source: Flowminder

Largest month-to-month changes in resident population in fluctuating communal sections in North-east -department (01 Mar 24 - 28 Feb 25)



Source: Flowminder

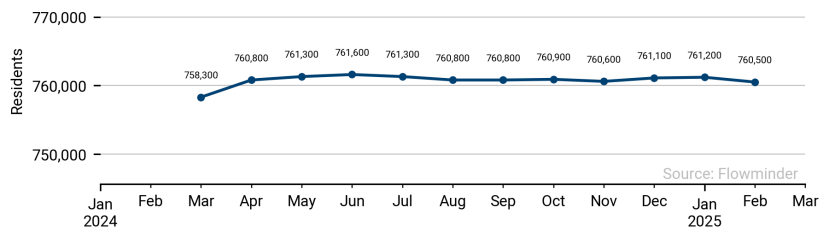
Population trends per communal section in North-east from 1 Mar 2024 to 28 Feb 2025



These population estimates come from Call Detail Records (CDRs) (mobile phone usage data) and other datasets for reference and adjustments. The estimates provided are not survey estimates, key informant estimates or field observations. If you are unfamiliar with this data source please read our documentation which can be found at www.flowminder.org

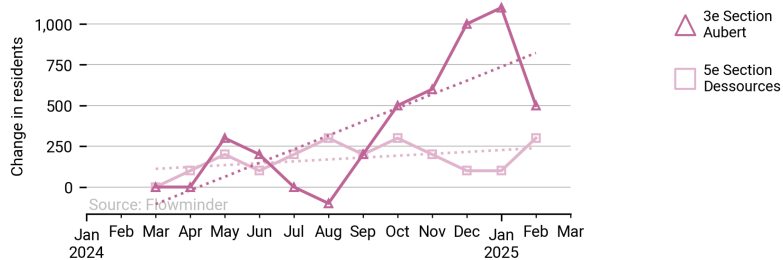
Monthly estimated population in North-west (01 Mar 24 - 28 Feb 25)

Sum of all communal sections incl. those with no CDRs

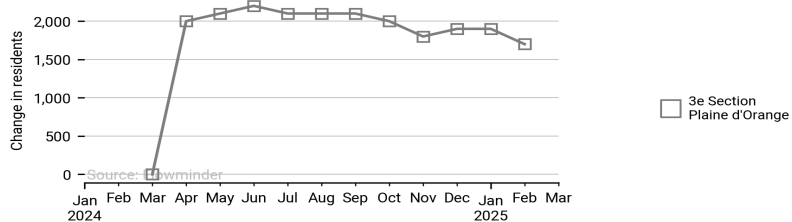


Communal sections in North-west with largest modelled change in population (01 Mar 24 - 28 Feb 25)

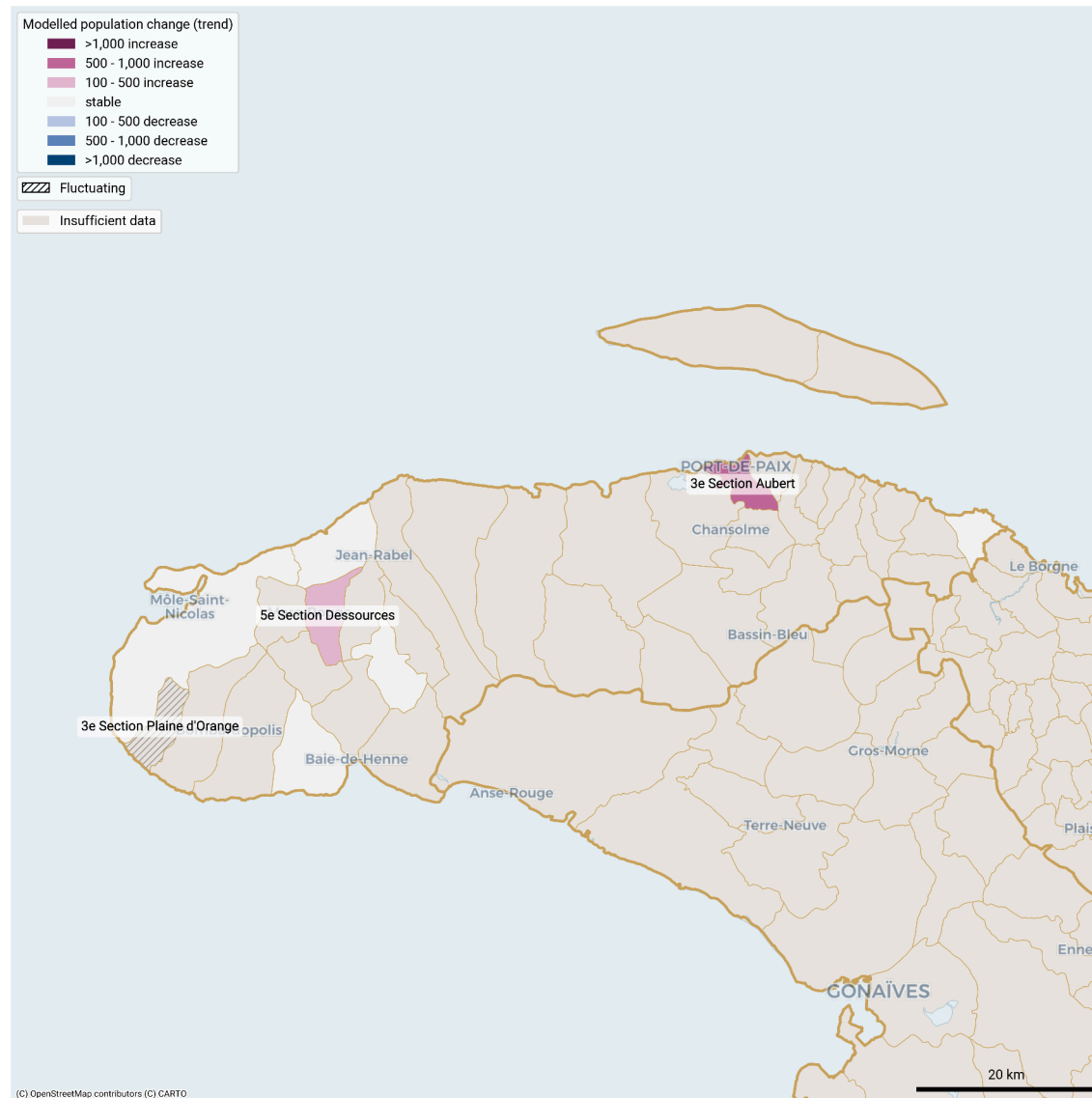
Solid line: estimates. Dotted line: model.



Largest month-to-month changes in resident population in fluctuating communal sections in North-west -department (01 Mar 24 - 28 Feb 25)



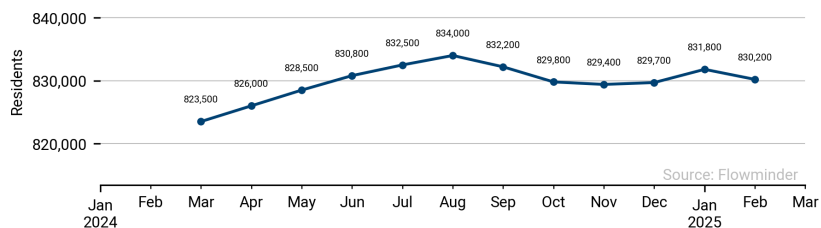
Population trends per communal section in North-west from 1 Mar 2024 to 28 Feb 2025



These population estimates come from Call Detail Records (CDRs) (mobile phone usage data) and other datasets for reference and adjustments. The estimates provided are not survey estimates, key informant estimates or field observations. If you are unfamiliar with this data source please read our documentation which can be found at www.flowminder.org

Monthly estimated population in South (01 Mar 24 - 28 Feb 25)

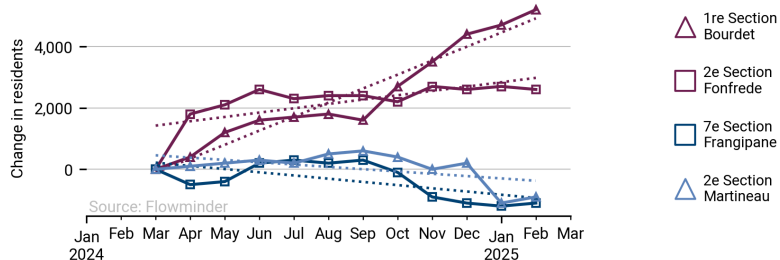
Sum of all communal sections incl. those with no CDRs



Source: Flowminder

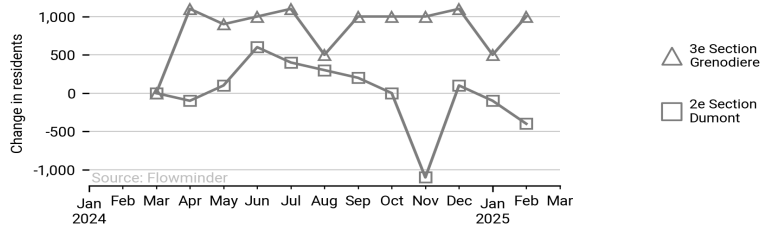
Communal sections in South with largest modelled change in population (01 Mar 24 - 28 Feb 25)

Solid line: estimates. Dotted line: model.



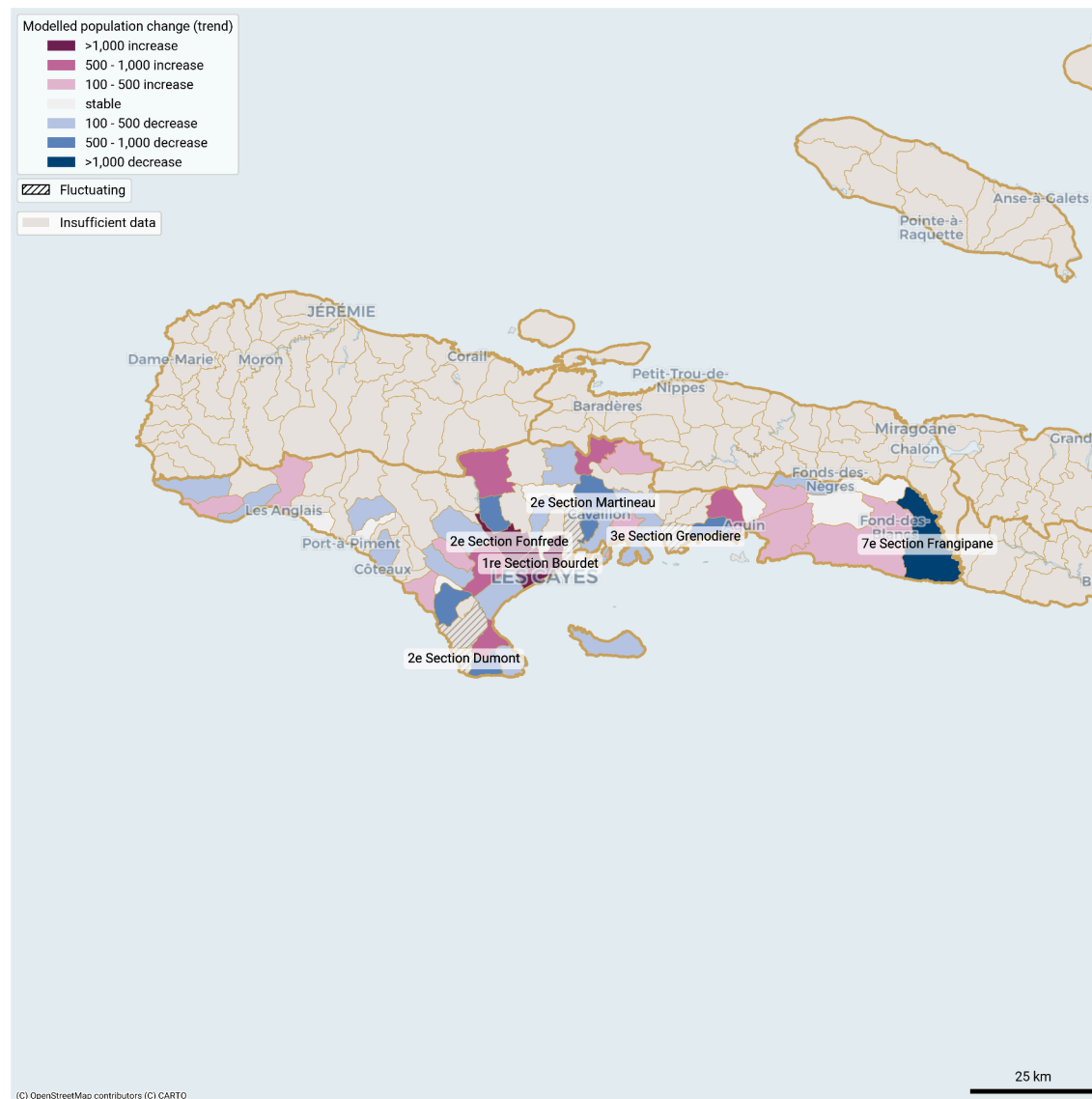
Source: Flowminder

Largest month-to-month changes in resident population in fluctuating communal sections in South -department (01 Mar 24 - 28 Feb 25)



Source: Flowminder

Population trends per communal section in South from 1 Mar 2024 to 28 Feb 2025

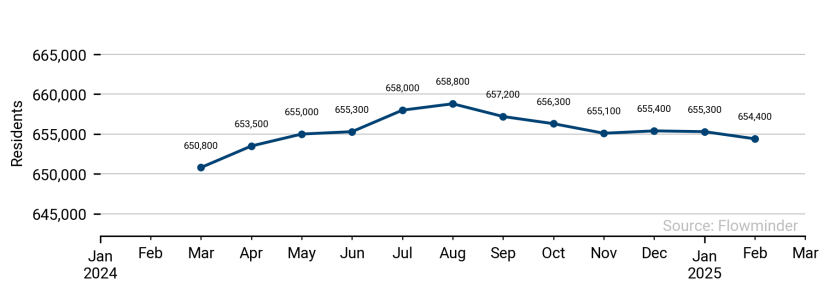


These population estimates come from Call Detail Records (CDRs) (mobile phone usage data) and other datasets for reference and adjustments. The estimates provided are not survey estimates, key informant estimates or field observations. If you are unfamiliar with this data source please read our documentation which can be found at www.flowminder.org

Published: 05 Mar 2025

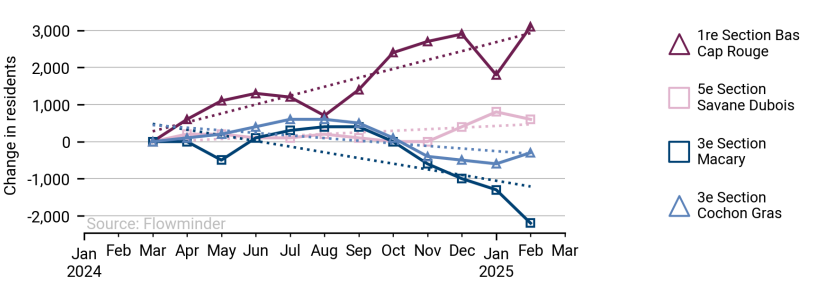
Monthly estimated population in South-east (01 Mar 24 - 28 Feb 25)

Sum of all communal sections incl. those with no CDRs

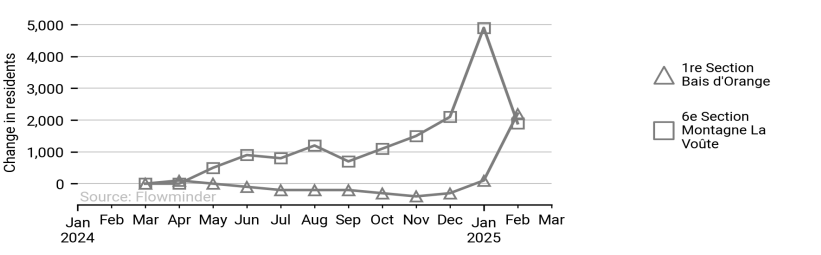


Communal sections in South-east with largest modelled change in population (01 Mar 24 - 28 Feb 25)

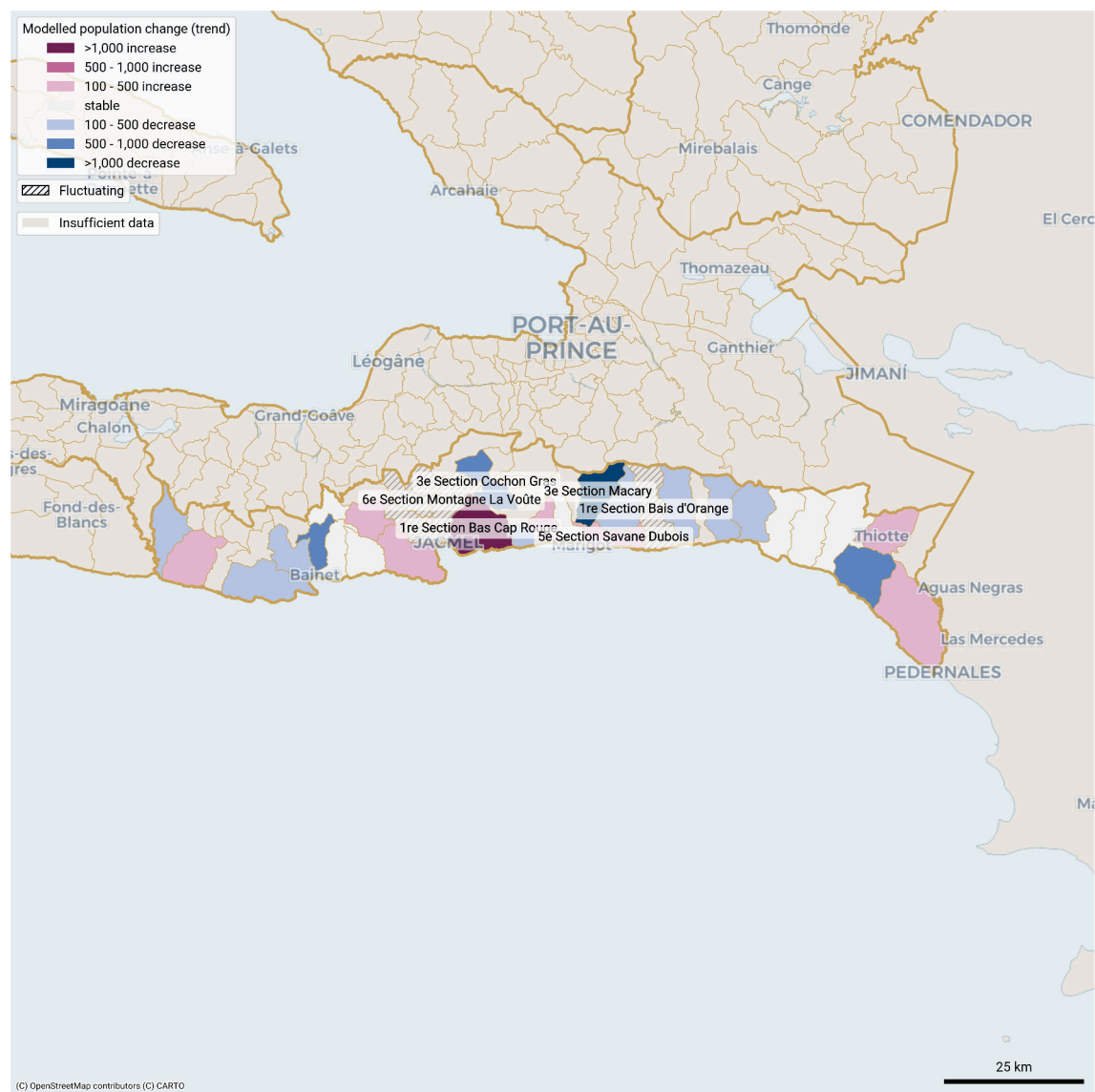
Solid line: estimates. Dotted line: model.



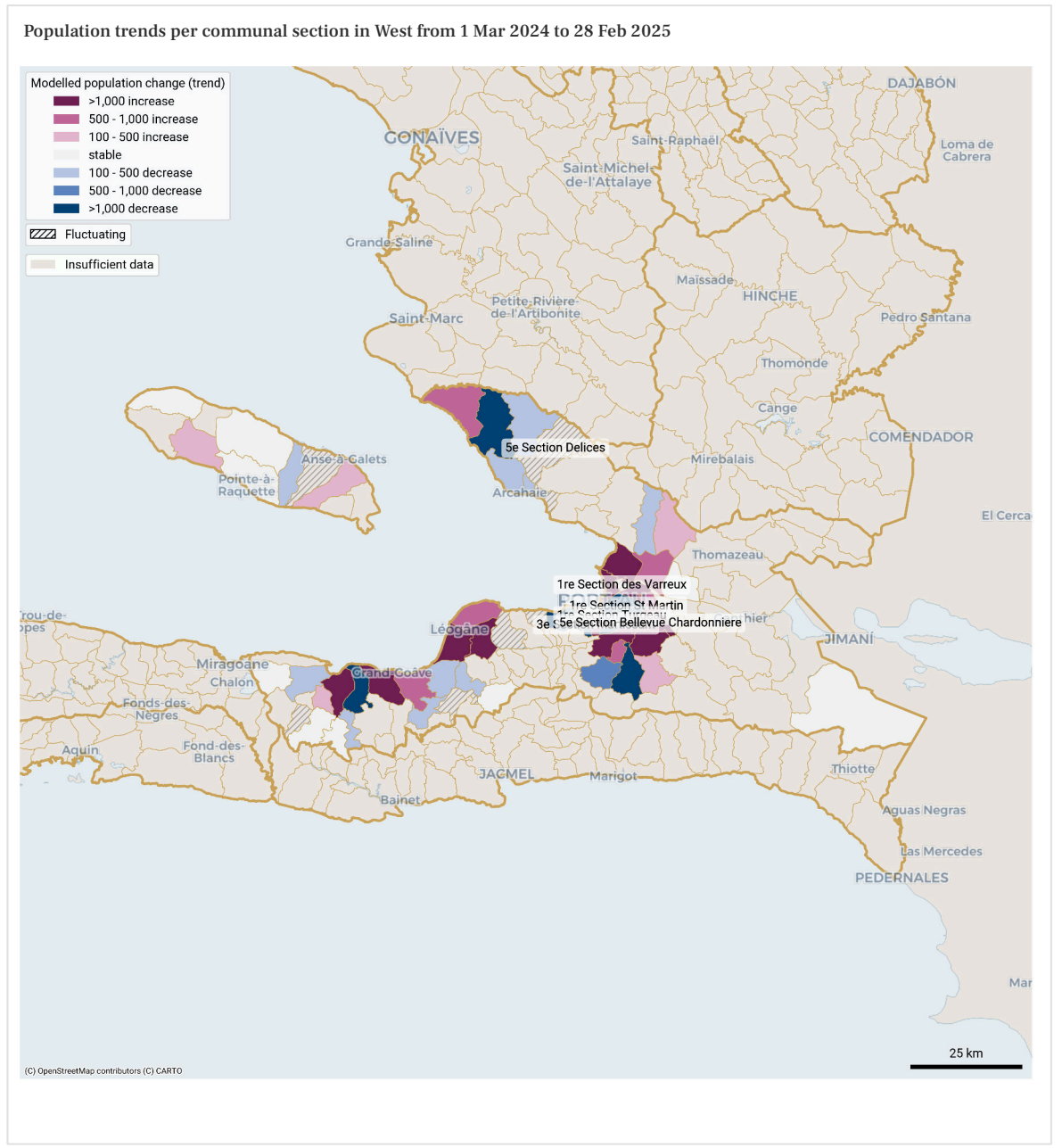
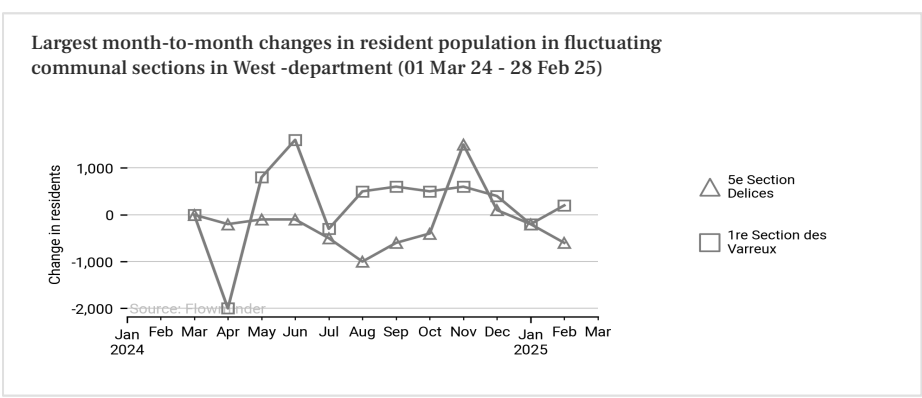
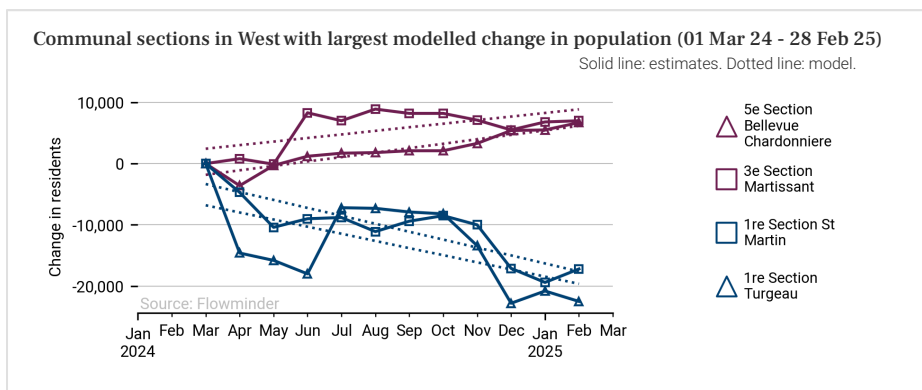
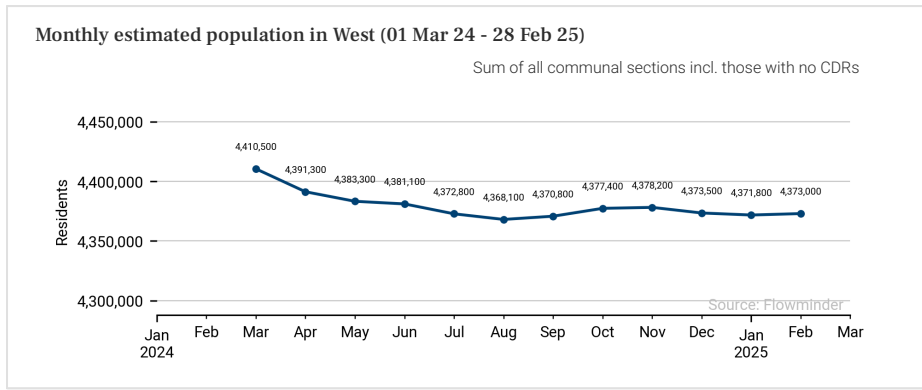
Largest month-to-month changes in resident population in fluctuating communal sections in South-east -department (01 Mar 24 - 28 Feb 25)



Population trends per communal section in South-east from 1 Mar 2024 to 28 Feb 2025



These population estimates come from Call Detail Records (CDRs) (mobile phone usage data) and other datasets for reference and adjustments. The estimates provided are not survey estimates, key informant estimates or field observations. If you are unfamiliar with this data source please read our documentation which can be found at www.flowminder.org



These population estimates come from Call Detail Records (CDRs) (mobile phone usage data) and other datasets for reference and adjustments. The estimates provided are not survey estimates, key informant estimates or field observations. If you are unfamiliar with this data source please read our documentation which can be found at www.flowminder.org

List of communal sections with estimated changes in population where |total change|> 100 (01 Mar 24 - 28 Feb 25): increasing, decreasing or fluctuating

Department	Communal section	Population estimate Feb 2025	Trend type in the last 12 months	Modelled change over the last 12 months	Largest estimated month-to-month change
Artibonite	1re Section Pont Tamarin	249,000	Increasing	2,640	-
Artibonite	6e Section Charrette	116,200	Increasing	3,850	-
Artibonite	2e Section Bois Neuf	63,600	Decreasing	-2,140	-
Artibonite	3e Section Labady	63,600	Decreasing	-3,040	-
Artibonite	5e Section Bocozelle	63,200	Fluctuating	-	500
Artibonite	1re Section de Desdunes	41,800	Decreasing	-140	-
Artibonite	2e Section Fosse Naboth ou Duvalon	32,200	Increasing	370	-
Artibonite	4e Section Desarmes (Quartier de Desarmes)	29,800	Increasing	270	-
Artibonite	1re Section Villars	28,500	Increasing	200	-
Artibonite	5e Section Bastien	27,200	Fluctuating	-	500
Artibonite	1re Section Deluge	21,300	Decreasing	-810	-
Artibonite	2e Section Bossous	17,600	Decreasing	-420	-
Artibonite	4e Section Poteaux	15,200	Decreasing	-390	-
Artibonite	4e Section Lalouere	15,200	Decreasing	-180	-
Artibonite	3e Section Guillaume Moge (Quartier de Desarmes)	13,100	Increasing	750	-
Centre	1re Section Juanaria	72,100	Increasing	1,190	-
Centre	1re Section Renthe Mathe	55,400	Increasing	780	-
Centre	4e Section Crete Brûlée	54,800	Increasing	1,560	-
Centre	2e Section Juampas	35,900	Increasing	720	-
Centre	1re Section Cabral	27,800	Fluctuating	-	100
Centre	2e Section Sarazin	19,900	Increasing	140	-
Centre	3e Section Grand Boucan	17,200	Fluctuating	-	500
Grande'Anse	9e Section Fond Rouge Torbeck	33,000	Increasing	1,660	-

Department	Communal section	Population estimate Feb 2025	Trend type in the last 12 months	Modelled change over the last 12 months	Largest estimated month-to-month change
Grande'Anse	8e Section Fond Rouge Dahere	30,000	Decreasing	-110	-
Grande'Anse	3e Section Haute Guinaudee	21,000	Increasing	690	-
Grande'Anse	1re Section Grandoit	20,600	Increasing	260	-
Grande'Anse	1re Section Basse Voldroque	19,400	Increasing	350	-
Grande'Anse	1re Section Anote ou 1re Tapion	15,000	Increasing	190	-
Grande'Anse	1re Section Dejean	14,500	Increasing	330	-
Grande'Anse	1re Section Matador (Jorgue)	14,500	Increasing	310	-
Grande'Anse	6e Section Îles Blanches	14,100	Decreasing	-160	-
Grande'Anse	1re Section Duquillon	12,700	Decreasing	-200	-
Grande'Anse	2e Section Balisiers	11,800	Decreasing	-300	-
Grande'Anse	2e Section Haute Voldroque	11,400	Decreasing	-780	-
Grande'Anse	2e Section Espere	11,300	Decreasing	-440	-
Grande'Anse	5e Section Baliverne	10,900	Fluctuating	-	200
Grande'Anse	4e Section la Seringue	10,300	Decreasing	-450	-
Grande'Anse	1re Section Desormeau ou Bonbon	9,900	Increasing	220	-
Grande'Anse	3e Section Grand Vincent	8,600	Decreasing	-180	-
Grande'Anse	7e Section Marfranc ou Grande Riviere	8,400	Decreasing	-270	-
Grande'Anse	4e Section les Gommiers	7,700	Increasing	220	-
Grande'Anse	3e Section Îlet a Pierre Joseph	7,600	Decreasing	-140	-
Grande'Anse	1re Section Bernagousse	6,100	Increasing	280	-
Grande'Anse	2e Section Fond d'Icaque	5,900	Decreasing	-300	-
Grande'Anse	5e Section Duchity	5,900	Decreasing	-320	-
Grande'Anse	3e Section Garcasse	3,700	Decreasing	-580	-

These population estimates come from Call Detail Records (CDRs) (mobile phone usage data) and other datasets for reference and adjustments. The estimates provided are not survey estimates, key informant estimates or field observations. If you are unfamiliar with this data source please read our documentation which can be found at www.flowminder.org

List of communal sections with estimated changes in population where |total change|> 100 (01 Mar 24 - 28 Feb 25): increasing, decreasing or fluctuating

Department	Communal section	Population estimate Feb 2025	Trend type in the last 12 months	Modelled change over the last 12 months	Largest estimated month-to-month change
Nippes	1re Section Chalon	43,800	Increasing	2,850	-
Nippes	2e Section Grande-Riviere-Joly	19,000	Increasing	470	-
Nippes	2e Section Tiby	14,700	Increasing	680	-
Nippes	2e Section Fond-des-Negres ou Morne Brice	12,400	Increasing	780	-
Nippes	4e Section St-Michel	11,500	Fluctuating	-	400
Nippes	1re Section Salagnac	10,200	Increasing	270	-
Nippes	4e Section la Plaine	9,500	Decreasing	-170	-
Nippes	1re Section l'Asile ou Nan Paul	8,900	Fluctuating	-	1,800
Nippes	1re Section Baconnois-Barreau	8,800	Fluctuating	-	1,000
Nippes	1re Section Baconnois-Grand-Fond	8,700	Decreasing	-210	-
Nippes	3e Section Fond Tortue	8,600	Increasing	280	-
Nippes	3e Section Vassal Labiche	8,600	Decreasing	-220	-
Nippes	2e Section Bezin II	8,500	Fluctuating	-	300
Nippes	3e Section Lieve ou Vigny	8,300	Fluctuating	-	1,900
Nippes	2e Section Belle Riviere	8,200	Decreasing	-340	-
Nippes	1er Section Bouzi	6,800	Decreasing	-120	-
Nippes	3e Section Arnaud (Morcou)	6,200	Decreasing	-450	-
Nippes	3e Section Saut du Baril	6,100	Increasing	910	-
Nippes	1re Section Grand-Boucan	4,300	Fluctuating	-	800
North	2e Section Haut du Cap	180,400	Increasing	4,690	-
North	3e Section Petit Anse	113,200	Increasing	200	-
North	5e Section Ravine Desroches	71,700	Increasing	360	-
North	1re Section Savannette	32,500	Increasing	210	-

Department	Communal section	Population estimate Feb 2025	Trend type in the last 12 months	Modelled change over the last 12 months	Largest estimated month-to-month change
North	3e Section Roucou	32,300	Increasing	300	-
North	1re Section Ballon	22,600	Increasing	150	-
North	1re Section Morne Rouge	19,600	Increasing	330	-
North	2e Section Chabotte	19,200	Decreasing	-280	-
North	1re Section Basse Plaine	18,000	Increasing	190	-
North	2e Section Petit Howars (la Fange)	17,900	Fluctuating	-	500
North	2e Section Morne Pele	15,700	Increasing	210	-
North	1re Section Basse Plaine	15,700	Increasing	890	-
North	2e Section Bonnet a l'Eveque	14,400	Increasing	210	-
North	3e Section Genipailier	12,100	Decreasing	-250	-
North	3e Section Camp Coq	10,100	Increasing	120	-
North	6e Section Bras Gauche	9,200	Increasing	200	-
North	1re Section Camp-Louise	9,000	Decreasing	-360	-
North-East	1re Section Haut Maribahoux	107,400	Increasing	1,840	-
North-East	1re Section Dumas	30,000	Increasing	320	-
North-West	3e Section Aubert	106,800	Increasing	930	-
North-West	5e Section Dessources	24,000	Increasing	130	-
North-West	3e Section Plaine d'Orange	5,800	Fluctuating	-	2,000
South	1re Section Bourdet	94,700	Increasing	5,030	-
South	1re Section Boury	31,600	Decreasing	-320	-
South	3e Section Solon	26,600	Decreasing	-380	-
South	3e Section Cosse	22,300	Increasing	150	-
South	2e Section Champlois	19,600	Increasing	620	-

These population estimates come from Call Detail Records (CDRs) (mobile phone usage data) and other datasets for reference and adjustments. The estimates provided are not survey estimates, key informant estimates or field observations. If you are unfamiliar with this data source please read our documentation which can be found at www.flowgeek.org

Preparedness | Mobility situation report - Haiti

Part 3 | Communal sections with changes in population estimates

List of communal sections with estimated changes in population where |total change|> 100 (01 Mar 24 - 28 Feb 25): increasing, decreasing or fluctuating

Department	Communal section	Population estimate Feb 2025	Trend type in the last 12 months	Modelled change over the last 12 months	Largest estimated month-to-month change
South	1re Section Boileau	16,700	Decreasing	-280	-
South	3e Section Brodequin	16,200	Increasing	740	-
South	2e Section Martineau	15,600	Decreasing	-830	-
South	1re Section Levy Mersan	15,600	Decreasing	-530	-
South	1re Section Île a Vache	15,300	Decreasing	-390	-
South	2e Section Meloniere	15,100	Decreasing	-320	-
South	1re Section Beaulieu	14,700	Increasing	420	-
South	2e Section Berault	14,700	Increasing	570	-
South	2e Section Fonfrede	14,700	Increasing	1,560	-
South	2e Section Anse a Drick	14,300	Decreasing	-520	-
South	2e Section Bellevue	14,000	Increasing	100	-
South	2e Section Baie Dumesle	13,600	Decreasing	-120	-
South	3e Section Grenadiere	13,400	Fluctuating	-	1,100
South	1re Section Barbois	12,400	Fluctuating	-	1,000
South	1re Section Macean	12,100	Increasing	170	-
South	1re Section Blactote	11,800	Increasing	290	-
South	5e Section Laroque	11,500	Increasing	550	-
South	6e Section Solon	11,400	Increasing	320	-
South	2e Section Despas	10,700	Decreasing	-110	-
South	7e Section Frangipane	9,800	Decreasing	-1,150	-
South	1re Section Tapion	9,300	Increasing	630	-
South	3e Section Trichet	8,100	Decreasing	-370	-
South	8e Section Colline a Mongons	8,000	Decreasing	-100	-

Department	Communal section	Population estimate Feb 2025	Trend type in the last 12 months	Modelled change over the last 12 months	Largest estimated month-to-month change
South	4e Section Zanglais	7,900	Decreasing	-580	-
South	6e Section Boulmier	7,800	Fluctuating	-	900
South	5e Section Mercy	7,700	Decreasing	-170	-
South	2e Section Dumont	7,600	Fluctuating	-	1,200
South	9e Section Fond des Blancs	7,600	Increasing	120	-
South	4e Section Mare Henri	7,600	Increasing	270	-
South	2e Section Balais	7,200	Decreasing	-150	-
South	1re Section Fonds Palmiste	6,900	Increasing	230	-
South	4e Section Flamands	6,700	Increasing	360	-
South	2e Section Debouchette	6,600	Decreasing	-590	-
South	2e Section Dory	6,200	Decreasing	-100	-
South	3e Section Loby	5,700	Decreasing	-180	-
South	5e Section Sucrierie Henri	5,100	Decreasing	-260	-
South	4e Section Dalmette	3,600	Decreasing	-120	-
South-East	1re Section Bas Cap Rouge	84,500	Increasing	2,650	-
South-East	6e Section Montagne La Voûte	44,800	Fluctuating	-	2,800
South-East	1re Section Thiotte	26,800	Increasing	400	-
South-East	1re Section Boucan Guillaume	23,500	Increasing	320	-
South-East	11e Section La Montagne	20,100	Increasing	140	-
South-East	9e Section Bas des Gris Gris	17,700	Decreasing	-160	-
South-East	5e Section Bel Air	16,700	Decreasing	-130	-
South-East	1re Section Gris Gris	16,300	Increasing	400	-
South-East	2e Section Gaillard	16,300	Increasing	200	-

These population estimates come from Call Detail Records (CDRs) (mobile phone usage data) and other datasets for reference and adjustments. The estimates provided are not survey estimates, key informant estimates or field observations. If you are unfamiliar with this data source please read our documentation which can be found at www.flowgeek.org

Preparedness | Mobility situation report - Haiti

Part 3 | Communal sections with changes in population estimates

List of communal sections with estimated changes in population where |total change|> 100 (01 Mar 24 - 28 Feb 25): increasing, decreasing or fluctuating

Department	Communal section	Population estimate Feb 2025	Trend type in the last 12 months	Modelled change over the last 12 months	Largest estimated month-to-month change
South-East	4e Section Fond Jean Noël	15,500	Decreasing	-440	-
South-East	6e Section Jamais Vu	15,300	Decreasing	-430	-
South-East	1re Section La Vallee de Jacmel ou Muzac	14,800	Increasing	130	-
South-East	5e Section Savane Dubois	14,700	Increasing	480	-
South-East	3e Section Macary	14,500	Decreasing	-1,690	-
South-East	5e Section Bas de Grandou	14,500	Decreasing	-340	-
South-East	1re Section Bais d'Orange	12,900	Fluctuating	-	2,100
South-East	1re Section Ravine Normande	12,200	Decreasing	-170	-
South-East	2e Section Mabriele	11,600	Decreasing	-170	-
South-East	3e Section Cochon Gras	11,400	Decreasing	-770	-
South-East	10e Section La Vanneau	11,100	Fluctuating	-	1,700
South-East	4e Section Corail Lamothe	11,000	Decreasing	-180	-
South-East	8e Section Bas Coq Chante	10,700	Fluctuating	-	1,100
South-East	3e Section La Vallee de Baint	8,800	Decreasing	-730	-
South-East	2e Section Pot de Chambre	8,700	Decreasing	-540	-
South-East	9e Section Haut Coq Chante	6,000	Fluctuating	-	200
West	1re Section Turgeau	505,500	Decreasing	-12,820	-
West	1re Section St Martin	494,900	Decreasing	-14,270	-
West	3e Section Martissant	283,400	Increasing	6,440	-
West	10e Section Thor	270,400	Decreasing	-3,290	-
West	5e Section Bellevue Chardonnier	267,400	Increasing	7,990	-
West	11e Section Riviere Froide	216,600	Decreasing	-5,140	-
West	2e Section Morne l'Hopital	192,200	Decreasing	-4,310	-

Department	Communal section	Population estimate Feb 2025	Trend type in the last 12 months	Modelled change over the last 12 months	Largest estimated month-to-month change
West	11e Section Ravine Seche	132,000	Increasing	3,160	-
West	2e Section des Varreux	128,400	Increasing	630	-
West	3e Section Etang du Jonc	125,300	Increasing	4,160	-
West	1re Section Dessources	124,400	Increasing	2,450	-
West	3e Section Bellevue	118,700	Increasing	5,380	-
West	3e Section des Vases	108,600	Decreasing	-420	-
West	1re Section des Varreux	79,200	Increasing	2,020	-
West	1re Section Tete-a-Boeuf	57,200	Increasing	1,890	-
West	7e Section Gerard	55,700	Increasing	630	-
West	2e Section Petite Riviere	55,100	Increasing	830	-
West	9e Section Bizoton	53,300	Decreasing	-3,390	-
West	2e Section des Varreux	47,600	Increasing	5,050	-
West	3e Section Grande Rivere	39,600	Increasing	1,110	-
West	9e Section des Crochus	38,500	Decreasing	-300	-
West	1re Section des Varreux	37,200	Fluctuating	-	2,800
West	2e Section Petite Source	35,900	Fluctuating	-	1,600
West	4e Section Bellevue	34,700	Increasing	780	-
West	1re Section Bino	34,200	Decreasing	-160	-
West	3e Section Sourcailles	32,500	Decreasing	-1,410	-
West	1re Section Palma	26,300	Increasing	230	-
West	1re Section Montagne Noire	25,000	Increasing	890	-
West	2e Section Boucassin	22,900	Fluctuating	-	700
West	3e Section Petit Boucan	21,900	Fluctuating	-	700

These population estimates come from Call Detail Records (CDRs) (mobile phone usage data) and other datasets for reference and adjustments. The estimates provided are not survey estimates, key informant estimates or field observations. If you are unfamiliar with this data source please read our documentation which can be found at www.flowminder.org

List of communal sections with estimated changes in population where |total change| > 100 (01 Mar 24 - 28 Feb 25): increasing, decreasing or fluctuating

Department	Communal section	Population estimate Feb 2025	Trend type in the last 12 months	Modelled change over the last 12 months	Largest estimated month-to-month change
West	12e Section des Fourques	21,300	Decreasing	-1,410	-
West	4e Section Fond de Boudin	15,500	Fluctuating	-	1,100
West	4e Section Bellevue la Montagne	13,700	Increasing	3,050	-
West	4e Section des Crochus	11,700	Increasing	250	-
West	6e Section Matheux	9,100	Decreasing	-160	-
West	4e Section Montrouis	8,700	Increasing	640	-
West	5e Section Delices	7,800	Fluctuating	-	1,900
West	7e Section des Platons	6,500	Increasing	280	-
West	5e Section Grand Fond	5,900	Increasing	200	-
West	2e Section Bongars	5,000	Decreasing	-640	-
West	3e Section Grande Source	4,500	Decreasing	-360	-
West	2e Section Grand Vide	4,400	Increasing	200	-
West	5e Section Grande Colline	3,800	Decreasing	-150	-
West	2e Section Fonds Baptiste	3,700	Decreasing	-2,120	-
West	5e Section Palmiste a Vin	3,500	Decreasing	-170	-
West	1re Section Boucassin	3,400	Decreasing	-280	-
West	10e Section des Palmes	3,000	Decreasing	-120	-
West	6e Section Trou Canari	3,000	Fluctuating	-	500
West	12e Section Cormiers	1,600	Decreasing	-210	-

Department	Communal section	Population estimate Feb 2025	Trend type in the last 12 months	Modelled change over the last 12 months	Largest estimated month-to-month change
------------	------------------	------------------------------	----------------------------------	---	---

Authors And Funders

This report was authored by the Flowminder Foundation.

This work was made possible by funding from the UK Foreign, Commonwealth and Development Office (FCDO).

Acknowledgements

This study was made possible thanks to the anonymised (aggregated) Call Detail Records provided by a mobile network operator in Haiti.

How to use this report

We provide population estimates that take into account population movements within Haiti, per month and per communal section. The current crisis has led to large population movements, particularly of internally displaced people (e.g. [IDP round 2](#)), which can result in population statistics becoming outdated over a few months, and therefore impairing preparedness efforts (e.g. hazard population exposure estimation, needs assessment, service and contingency planning).

Indicators presented

Modelled change (trend): the predicted population change for the reporting period from all 12 monthly estimates, which smoothes out monthly variations (linear regression).

Estimated change: the difference in the estimated population between the first and last months of the 12 month reporting period, which does not reflect any monthly variation within.

For communal sections with fewer than 10 months of resident estimates during the reporting period, we do not make a trend classification (insufficient data). For monthly population estimates at the department level, we carry forward the latest estimate to fill missing months in a communal section so that the aggregated changes at the department level are only based on observed CDR-derived mobility.

For communal sections with fast changing populations, we categorised them as 'increasing', 'decreasing', 'stable', when there is little to no change; or as 'fluctuating' when large month-to-month changes prevented us from detecting a trend.

Report's data

This report uses our v4.0 dataset ([documentation](#), [release notes](#)), available at <https://haiti.mobility-dashboard.org>.

This report and its contents may only be shared with attribution to the Flowminder Foundation and Digicel Haiti. Adaptation is permitted as long as the changes are indicated and the Flowminder Foundation and Digicel Haiti are cited. Use of the report and its contents is limited to humanitarian and development purposes.

Disclaimer of Warranties and Limitation of Liability: To the extent possible, Flowminder and Digicel offer this report and its contents as-is and as-available, and make no representations or warranties of any kind concerning this report and its contents, whether express, implied, statutory, or other. This includes, without limitation, warranties of title, merchantability, fitness for a particular purpose, non-infringement, absence of latent or other defects, accuracy, or the presence or absence of errors, whether or not known or discoverable.

To the extent possible, in no event will Flowminder or Digicel be liable on any legal theory (including, without limitation, negligence) or otherwise for any direct, special, indirect, incidental, consequential, punitive, exemplary, or other losses, costs, expenses, or damages arising out of the use of the report or its contents, even if Flowminder or Digicel have been advised of the possibility of such losses, costs, expenses, or damages. The disclaimer of warranties and limitation of liability provided above shall be interpreted in a manner that, to the extent possible, most closely approximates an absolute disclaimer and waiver of all liability.

Data privacy & governance

No personal data, such as an individual's identity, demographics, location, contacts or movements, is made available to the government or any other third party at any time. All results produced by Flowminder are aggregated results (for example, subscriber density in a given municipality), which means that they do not contain any information about individual subscribers.

This data is fully anonymised. This approach complies with the European Union's General Data Protection Regulation (EU GDPR2016/679). Data is processed on a server installed behind the mobile network operator's firewall in Haiti, and no personal data leaves the operator's premises.

Data considerations

The estimates shown are our best current assessment of movements. However, there are a number of uncertainties. The information should be interpreted together with other available evidence.

For more information about our methods, please read our Haiti Mobility Data Indicators documentation on residents and relocation at [here](#).

Data Sources

Pseudonymised Call Detail Records: Digicel Haiti

CDR-based data products: Flowminder

Phone survey data: [HT PS 2023](#)

Field survey data: [MSNA 2022](#) and [MSNA 2024](#)

Population estimates: [UN data](#); IHSI 2015; and IHSI 2020.

The following citation is required when using the data and information included in this report:

Flowminder Foundation, February 2025: Preparedness report, Mobility situation in Haiti from 01 February 2024 to 31 January 2025

For more information on the terms and conditions of Flowminder's reports and information products, please visit flowminder.org