

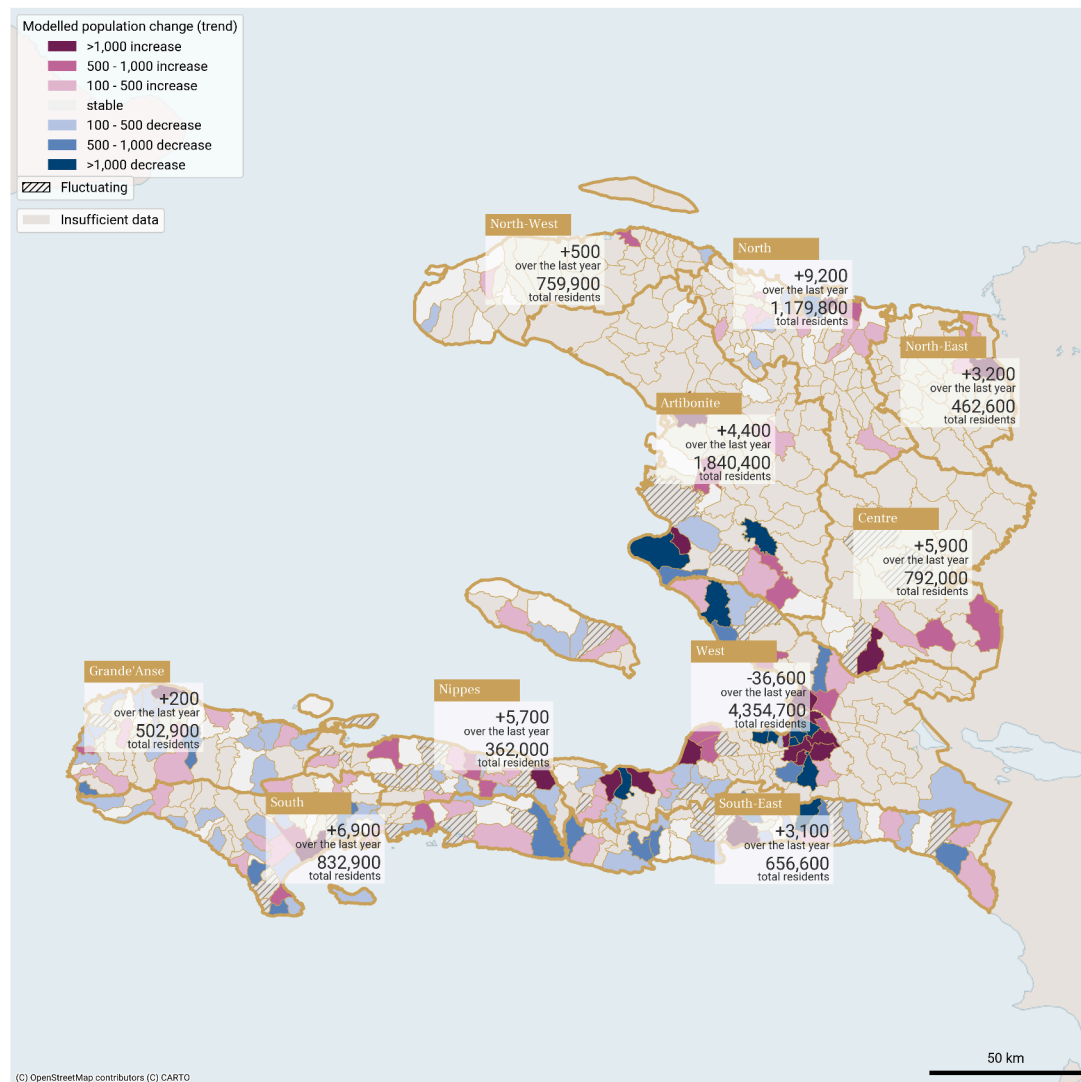
Communal sections with the largest modelled change in population between 01 Apr 24 - 31 Mar 25

Department	Communal section	Population estimate Mar 2025	Trend type in the last 12 months	Modelled change over the last 12 months
West	1re Section Turgeau	483,300	Decreasing	-19,330
West	1re Section St Martin	486,300	Decreasing	-15,400
West	5e Section Bellevue Chardonniere	271,900	Increasing	10,660
West	3e Section Bellevue	121,900	Increasing	10,550
West	2e Section Morne l'Hopital	189,000	Decreasing	-7,810

### Key observations for the period 01 Apr 24 - 31 Mar 25

- In the ZMPAP, in the last month only (February to March 2025), the population of 1ere section Turgeau (Port-au-Prince) dropped by an estimated 20,000 people, and that of 1re section St Martin (Delmas) by nearly 10,000 people.
  - The population of these two sections was already declining over the past 12 months but this drop, over one month only, is unusual, and may reflect the displacements reported in DTM [ETT 57.3](#) and [ETT 60](#).
  - Other sections in ZMPAP with large population declines are 2e Section Morne l'Hôpital (Port-au-Prince) and 11e Section Rivière Froide (Carrefour).
  - Meanwhile, the population of 5e Section Bellevue Chardonnière (Pétion-Ville) and 3e Section Bellevue (Tabarre) have kept increasing in the past 12 months, and both saw an increase of 500 people in the last month).
- The population of the West department overall dropped by an estimated 18,300 people in the last month only (February to March 2025) (36,600 since April 2024).
  - Last month's population decline marks the end of an eight-month period of steadiness (population around 4,370,000 people from July 2024 to February 2025, falling to 4,354,700 people in March)
  - As a result of mobility with West - and other internal movements - small but notable population increases are observed in several departments (Artibonite, Centre, North, North-East, South and South-East).
- Outside West, there were large increases in 1re Section Bourdet (Les Cayes) in South, 2e Section Haut du Cap (Cap Haïtien) in North, 6eme Section Charrette in Artibonite, and 1ere section Haut Maribahoux (Ounaminthe) in the North-East, a border point with the Dominican Republic (+ 9,000 in the last month only).

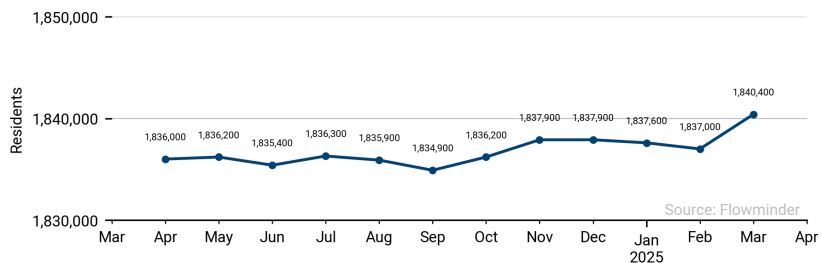
Modelled population trends (communal sections) and change estimates (departments) between 1 Apr 2024 and 31 Mar 2025



These population estimates come from Call Detail Records (CDRs) (mobile phone usage data) and other datasets for reference and adjustments. The estimates provided are not survey estimates, key informant estimates or field observations. If you are unfamiliar with this data source please read our documentation which can be found at [www.flowgeek.org](http://www.flowgeek.org)

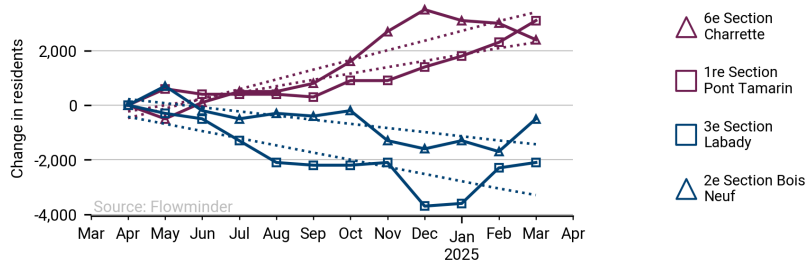
Monthly estimated population in Artibonite (01 Apr 24 - 31 Mar 25)

Sum of all communal sections incl. those with no CDRs

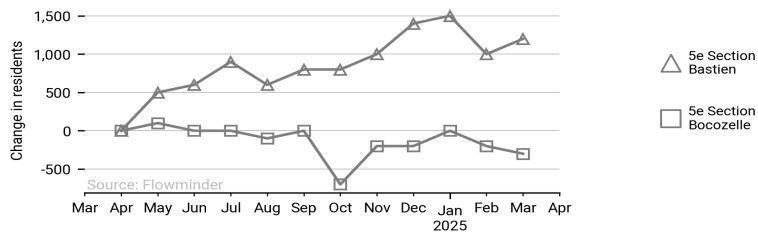


Communal sections in Artibonite with largest modelled change in population (01 Apr 24 - 31 Mar 25)

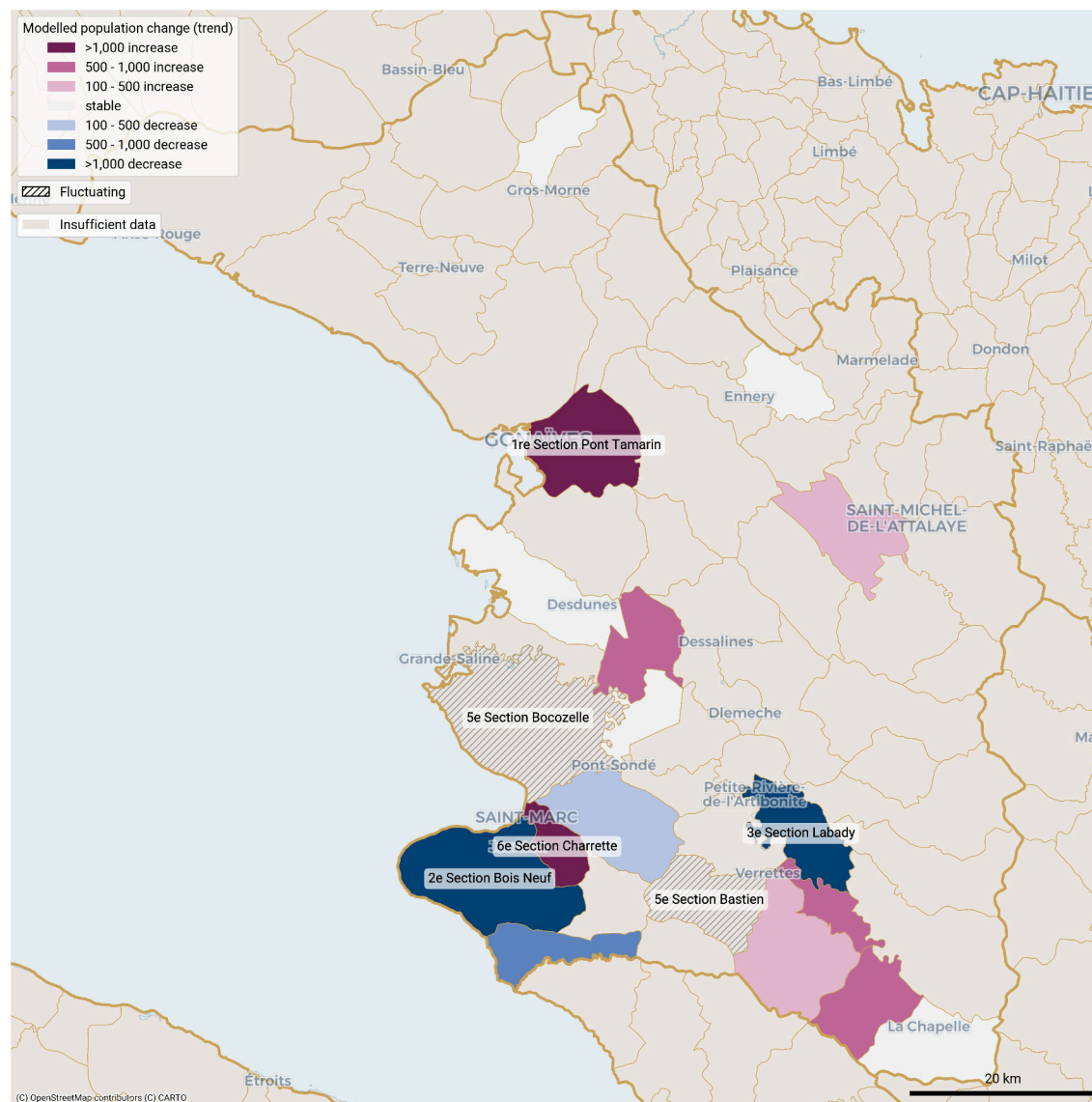
Solid line: estimates. Dotted line: model.



Largest month-to-month changes in resident population in fluctuating communal sections in Artibonite -department (01 Apr 24 - 31 Mar 25)



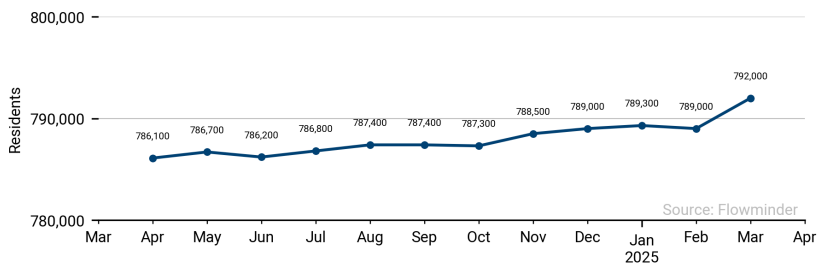
Population trends per communal section in Artibonite from 1 Apr 2024 to 31 Mar 2025



These population estimates come from Call Detail Records (CDRs) (mobile phone usage data) and other datasets for reference and adjustments. The estimates provided are not survey estimates, key informant estimates or field observations. If you are unfamiliar with this data source please read our documentation which can be found at [www.flowminder.org](http://www.flowminder.org)

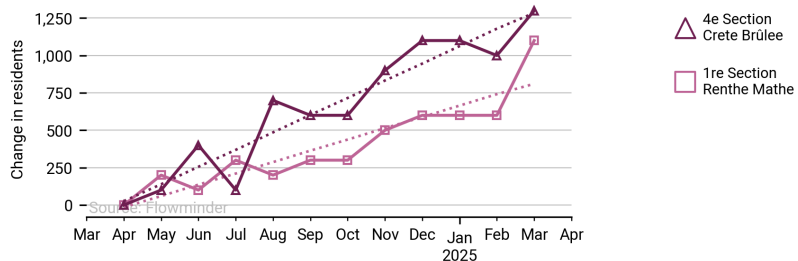
Monthly estimated population in Centre (01 Apr 24 - 31 Mar 25)

Sum of all communal sections incl. those with no CDRs

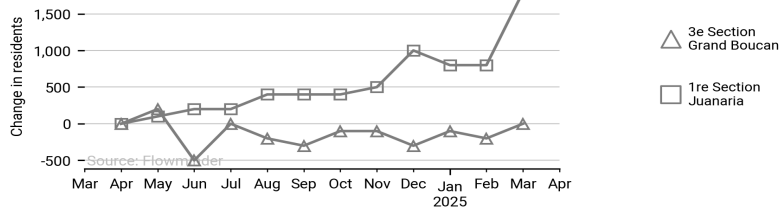


Communal sections in Centre with largest modelled change in population (01 Apr 24 - 31 Mar 25)

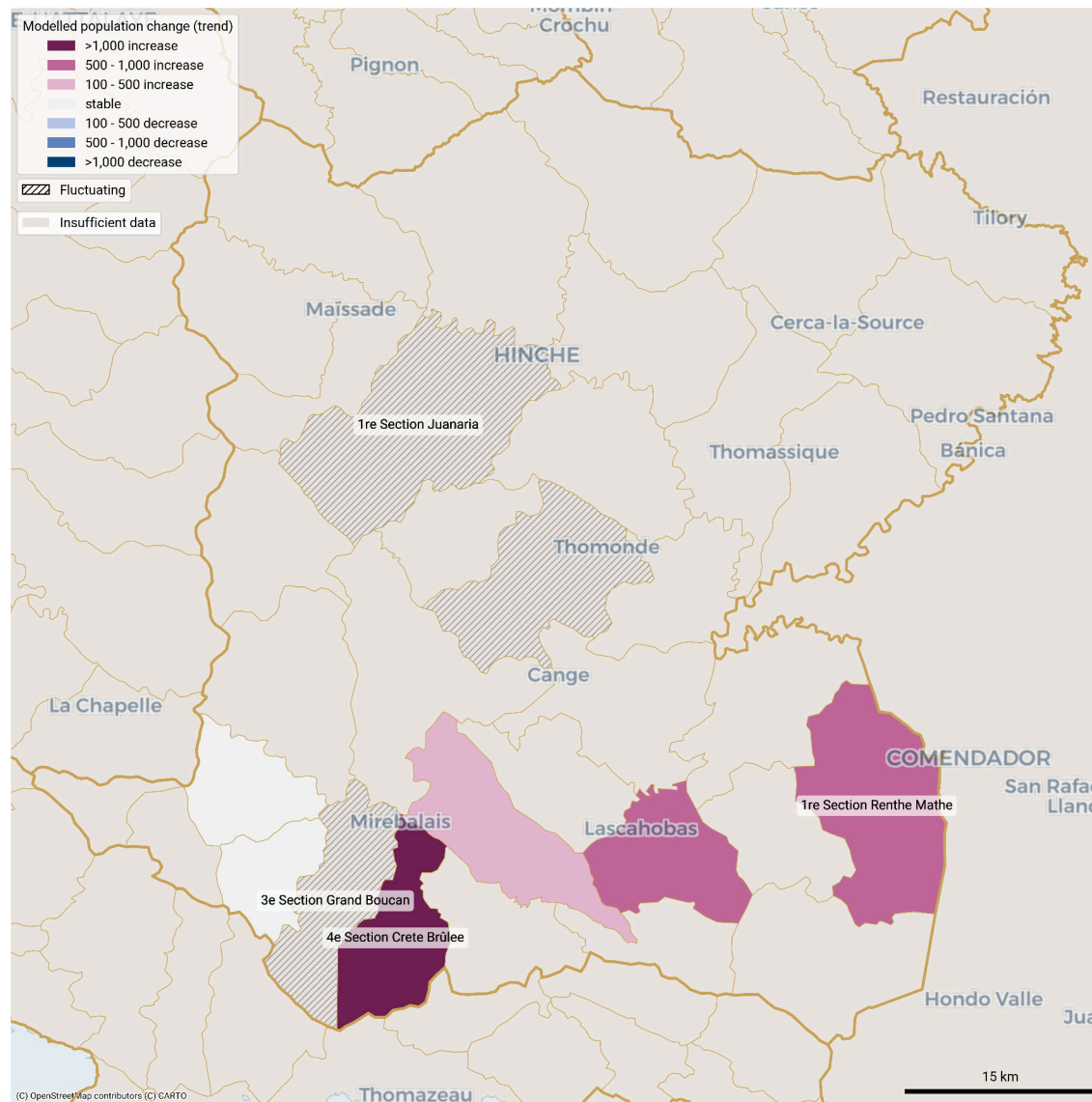
Solid line: estimates. Dotted line: model.



Largest month-to-month changes in resident population in fluctuating communal sections in Centre -department (01 Apr 24 - 31 Mar 25)



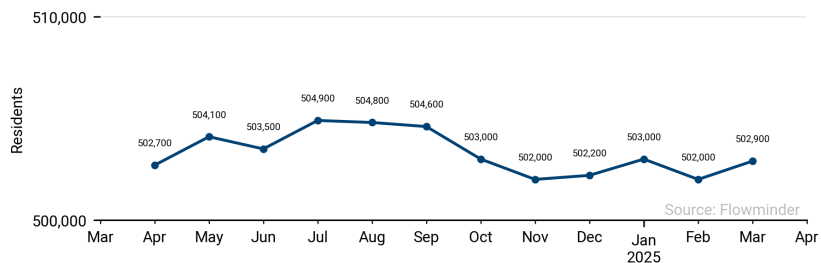
Population trends per communal section in Centre from 1 Apr 2024 to 31 Mar 2025



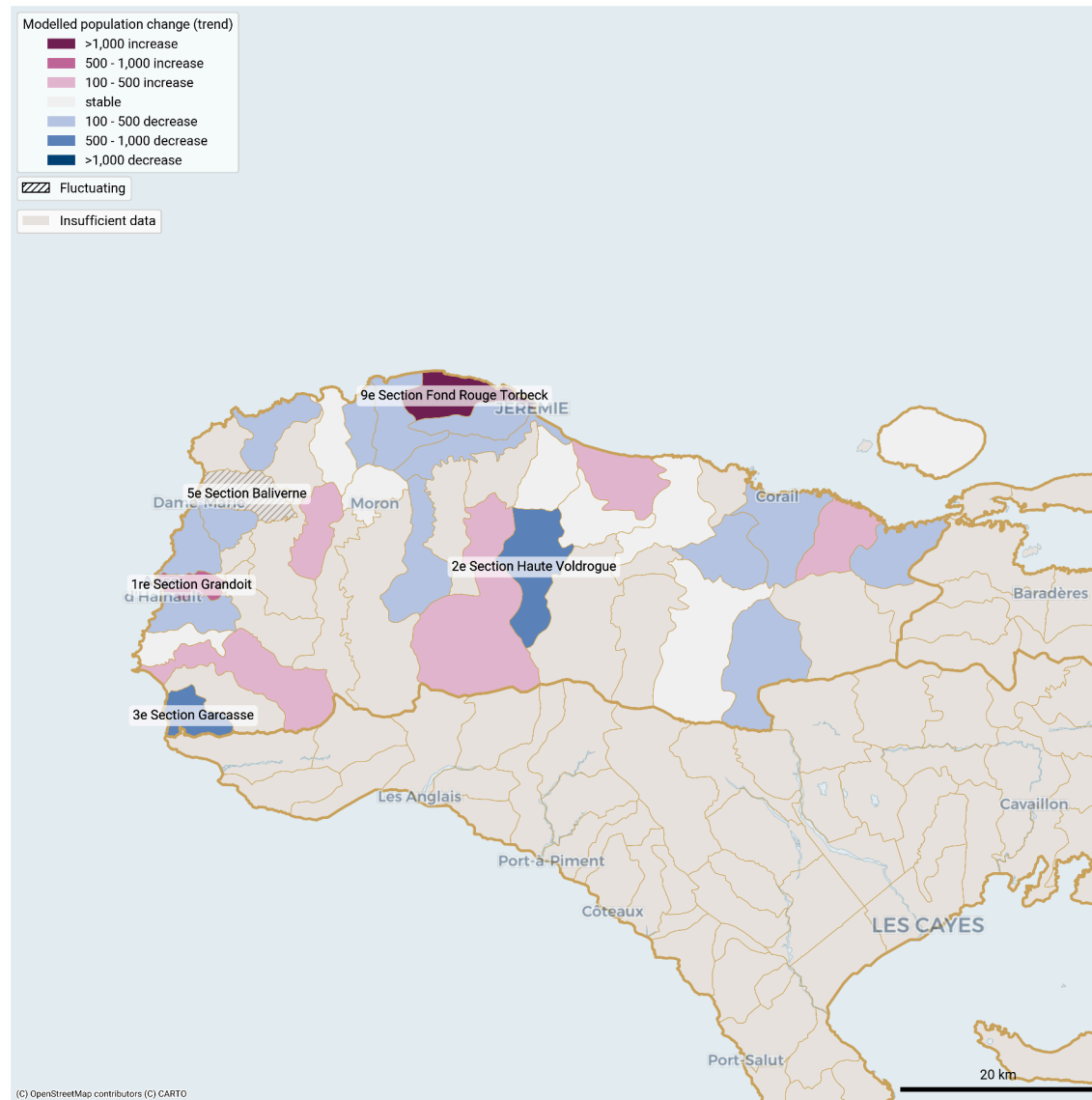
These population estimates come from Call Detail Records (CDRs) (mobile phone usage data) and other datasets for reference and adjustments. The estimates provided are not survey estimates, key informant estimates or field observations. If you are unfamiliar with this data source please read our documentation which can be found at [www.flowminder.org](http://www.flowminder.org)

Monthly estimated population in Grande'Anse (01 Apr 24 - 31 Mar 25)

Sum of all communal sections incl. those with no CDRs

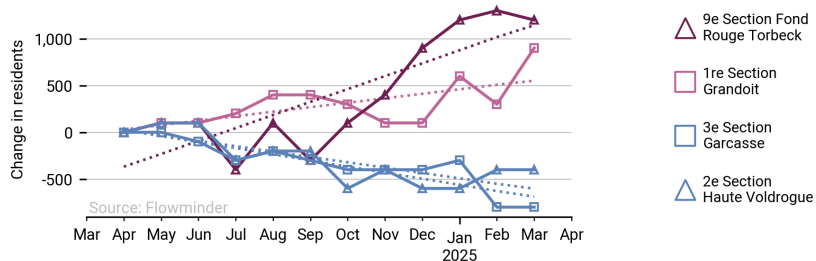


Population trends per communal section in Grande'Anse from 1 Apr 2024 to 31 Mar 2025

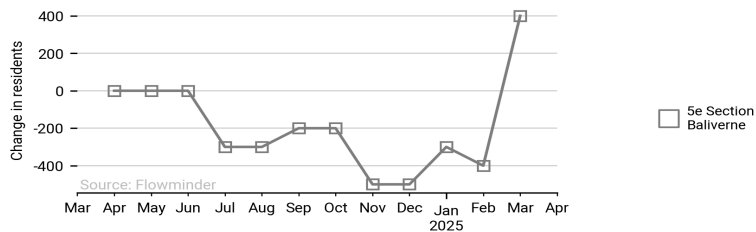


Communal sections in Grande'Anse with largest modelled change in population (01 Apr 24 - 31 Mar 25)

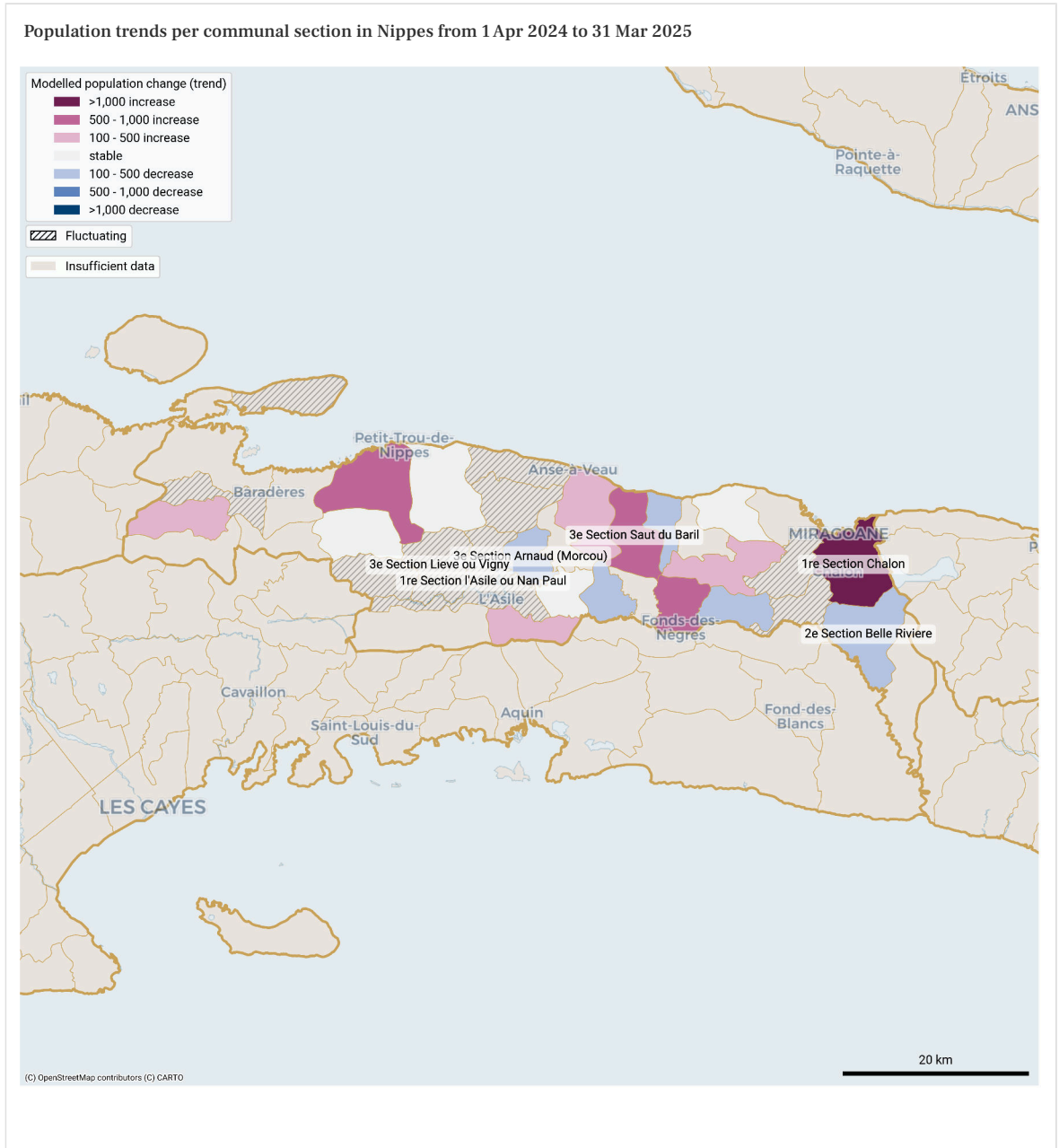
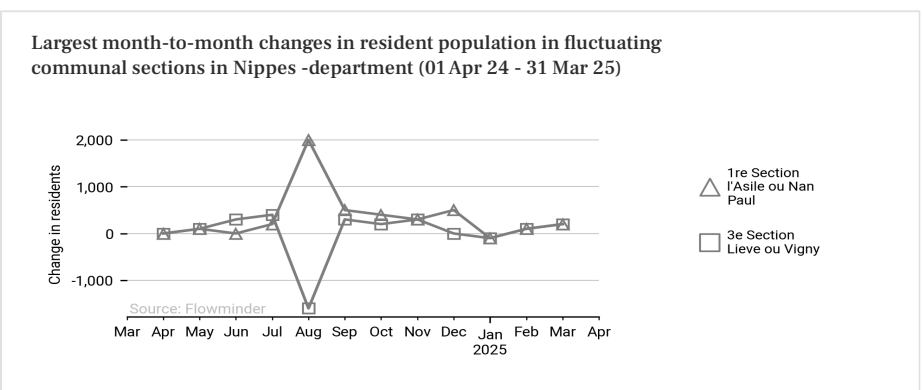
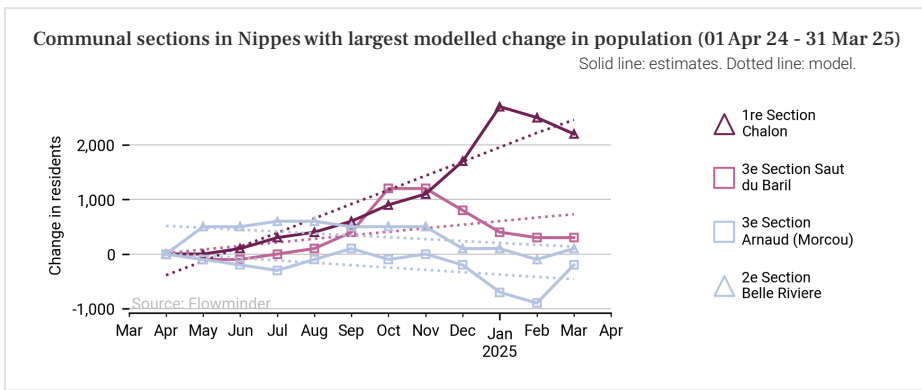
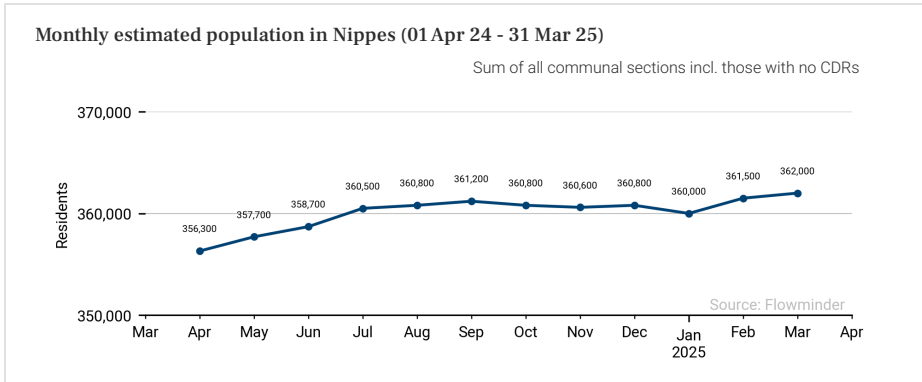
Solid line: estimates. Dotted line: model.



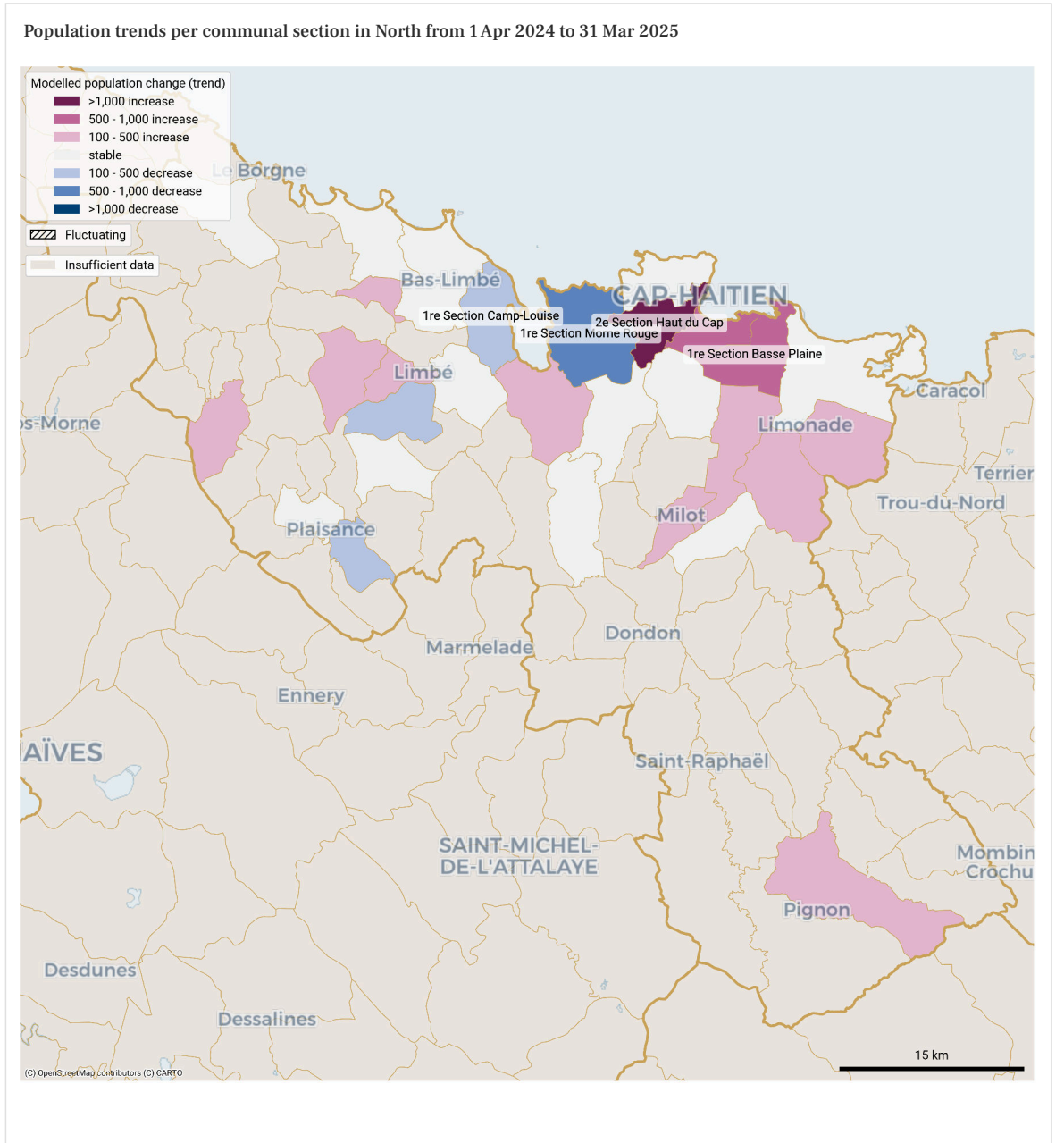
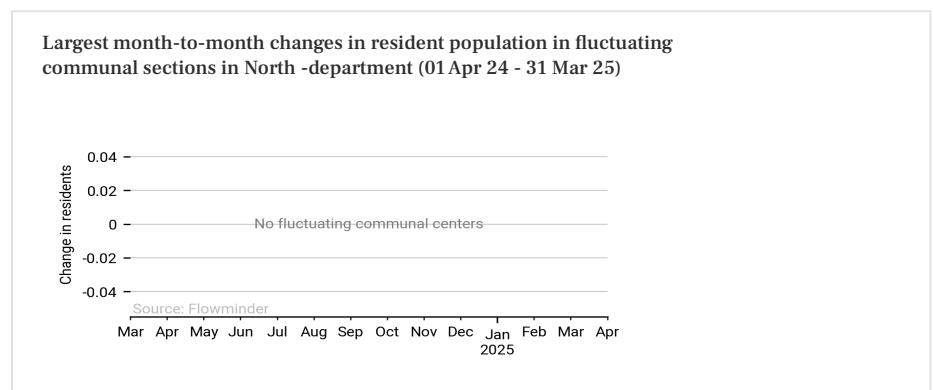
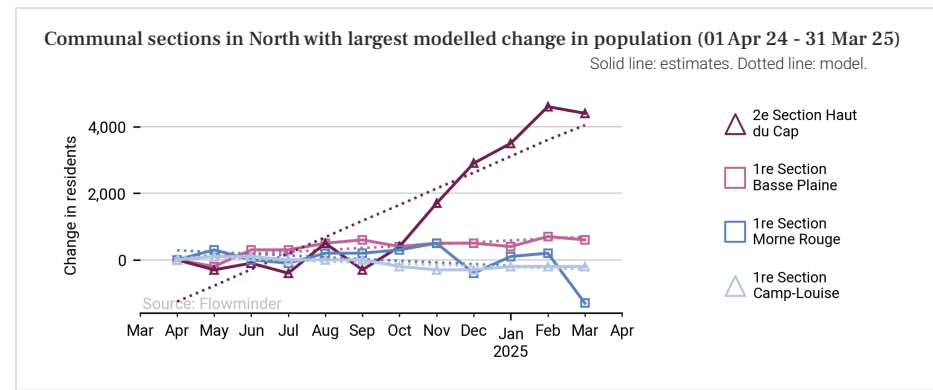
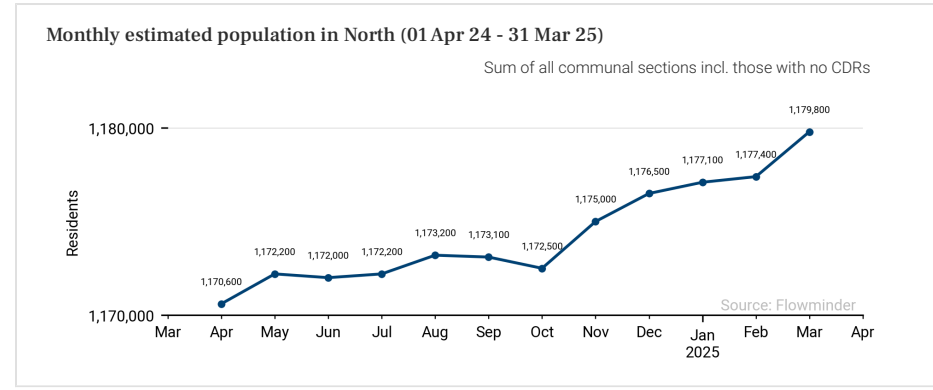
Largest month-to-month changes in resident population in fluctuating communal sections in Grande'Anse -department (01 Apr 24 - 31 Mar 25)



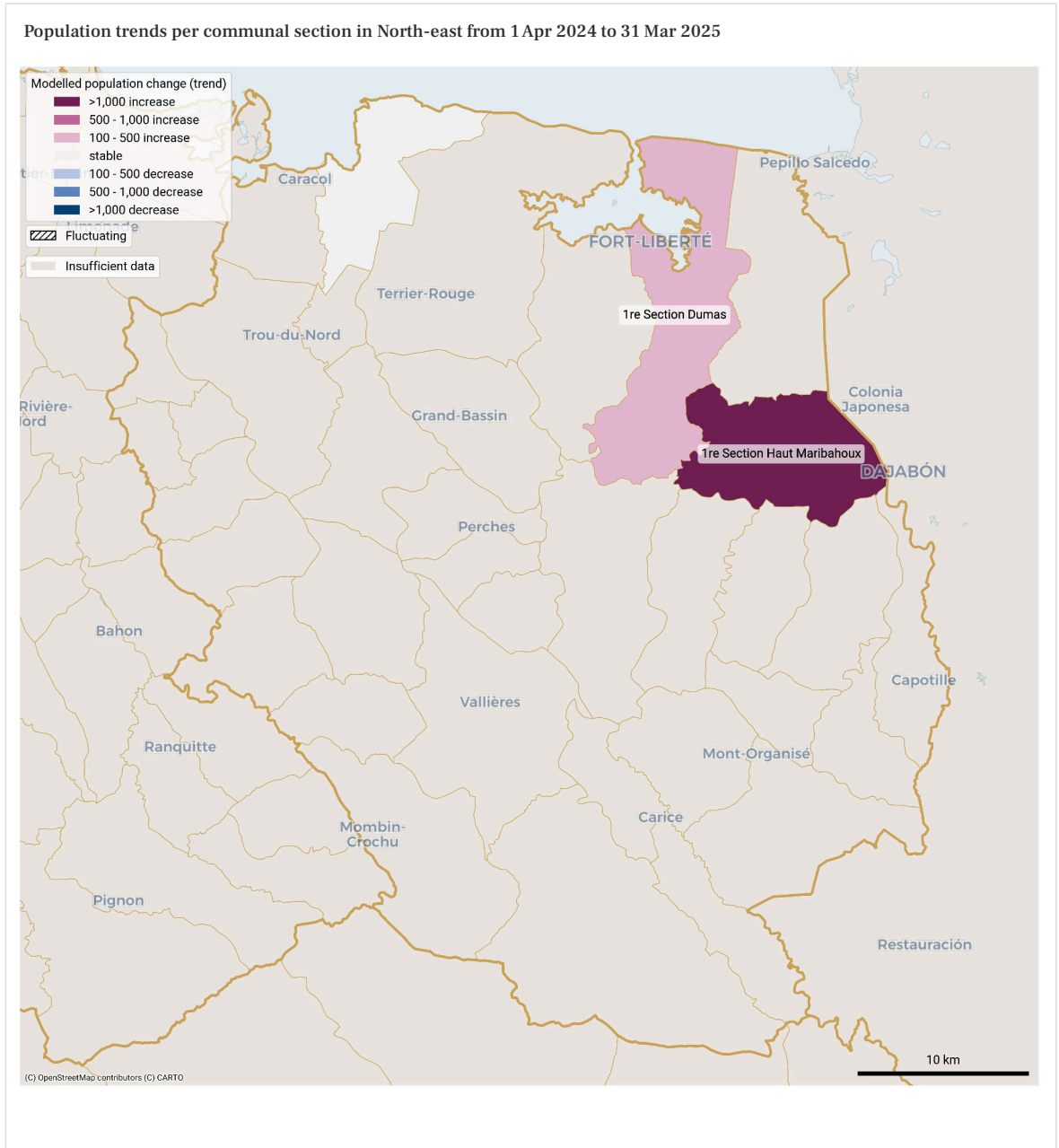
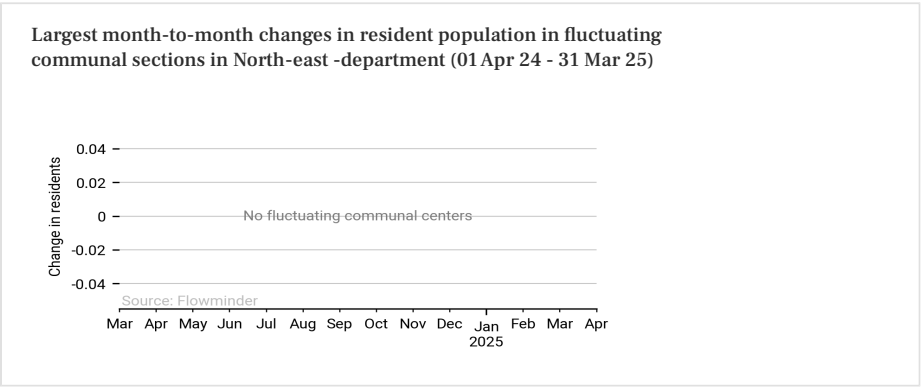
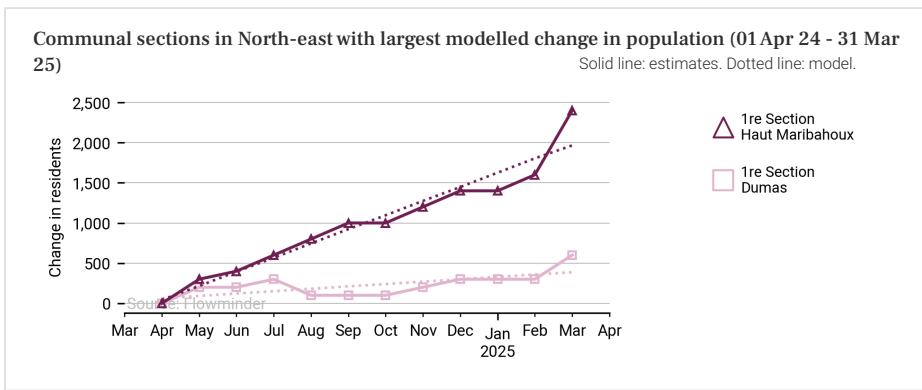
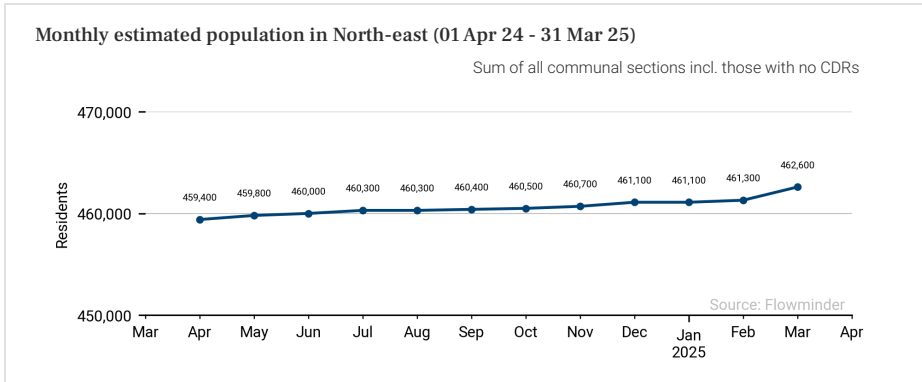
These population estimates come from Call Detail Records (CDRs) (mobile phone usage data) and other datasets for reference and adjustments. The estimates provided are not survey estimates, key informant estimates or field observations. If you are unfamiliar with this data source please read our documentation which can be found at [www.flowminder.org](http://www.flowminder.org)



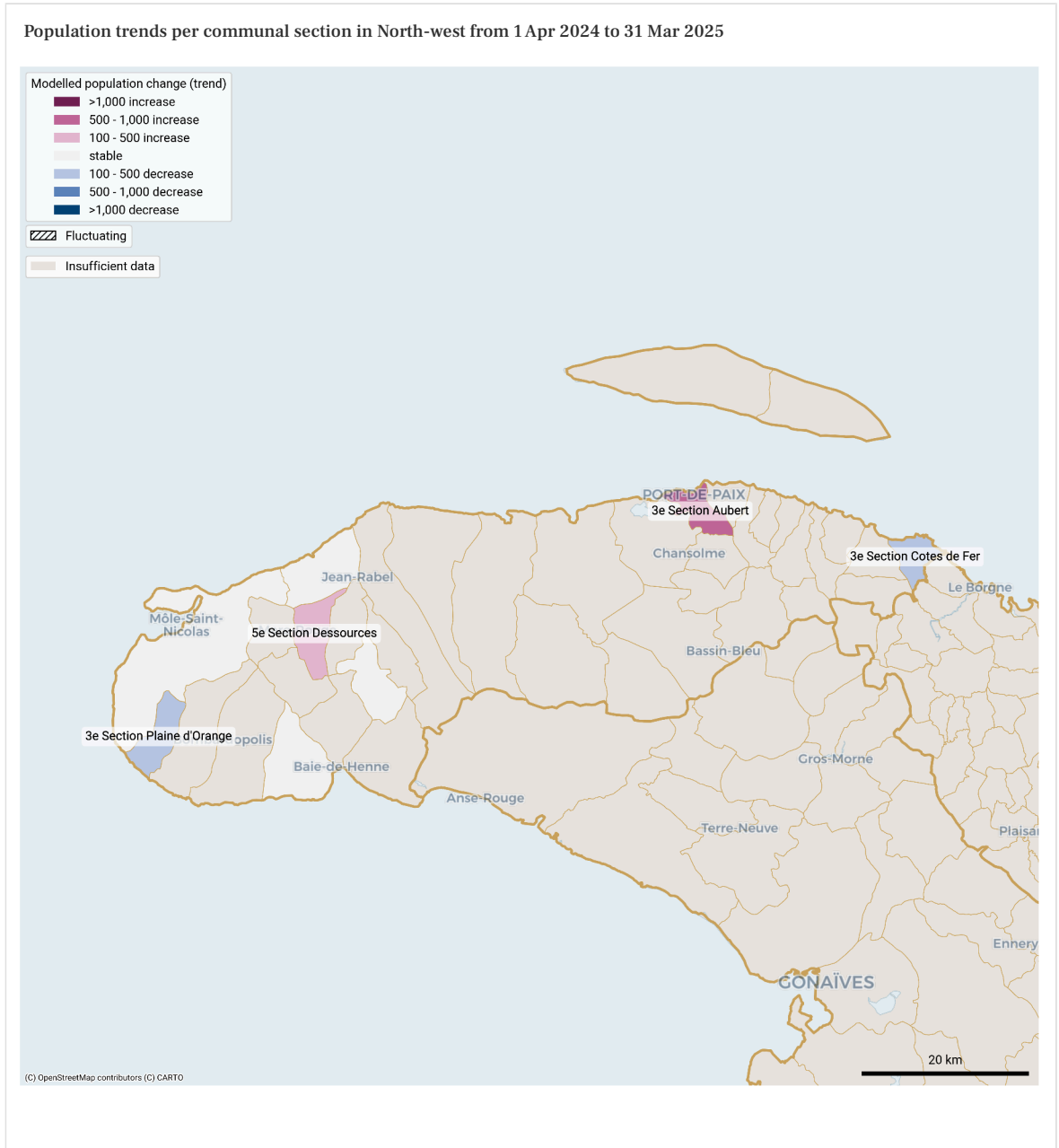
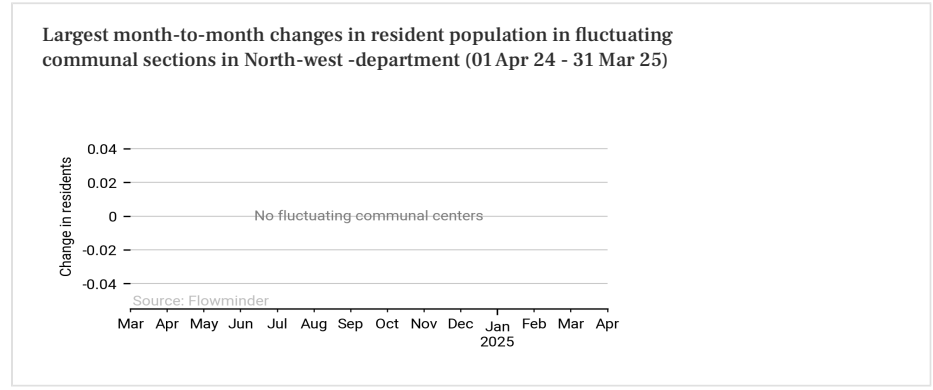
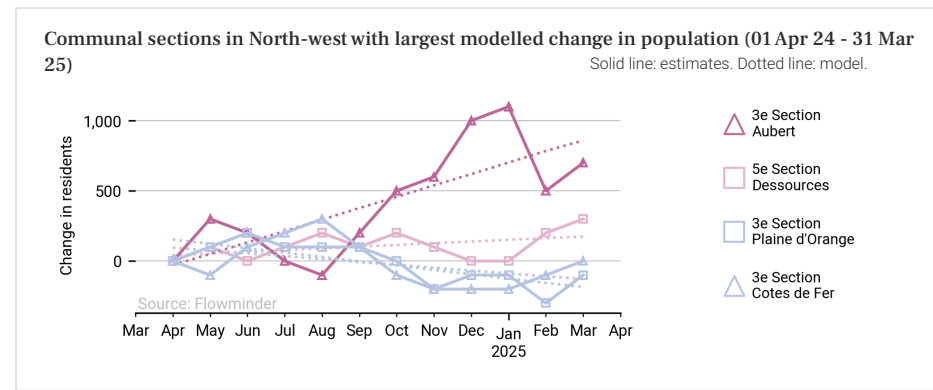
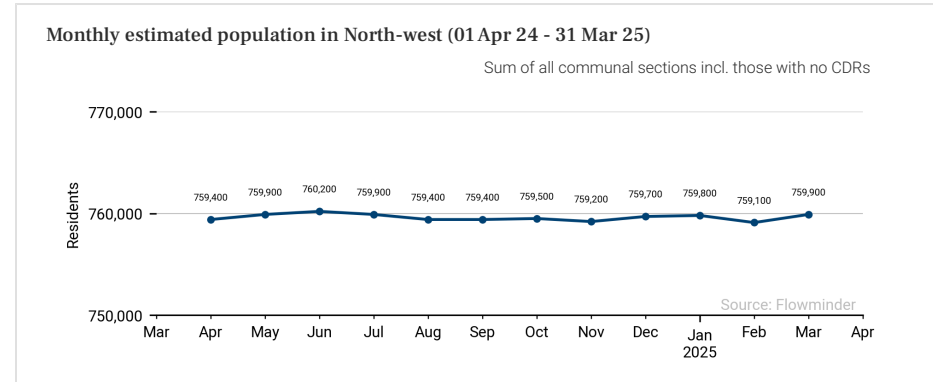
These population estimates come from Call Detail Records (CDRs) (mobile phone usage data) and other datasets for reference and adjustments. The estimates provided are not survey estimates, key informant estimates or field observations. If you are unfamiliar with this data source please read our documentation which can be found at [www.flowminder.org](http://www.flowminder.org)



These population estimates come from Call Detail Records (CDRs) (mobile phone usage data) and other datasets for reference and adjustments. The estimates provided are not survey estimates, key informant estimates or field observations. If you are unfamiliar with this data source please read our documentation which can be found at [www.flowminder.org](http://www.flowminder.org)



These population estimates come from Call Detail Records (CDRs) (mobile phone usage data) and other datasets for reference and adjustments. The estimates provided are not survey estimates, key informant estimates or field observations. If you are unfamiliar with this data source please read our documentation which can be found at [www.flowminder.org](http://www.flowminder.org)

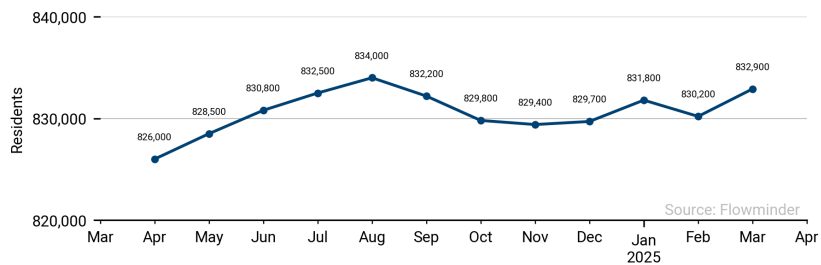


These population estimates come from Call Detail Records (CDRs) (mobile phone usage data) and other datasets for reference and adjustments. The estimates provided are not survey estimates, key informant estimates or field observations. If you are unfamiliar with this data source please read our documentation which can be found at [www.flowminder.org](http://www.flowminder.org)



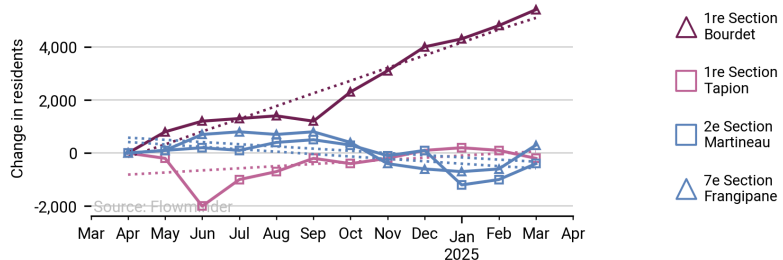
Monthly estimated population in South (01 Apr 24 - 31 Mar 25)

Sum of all communal sections incl. those with no CDRs

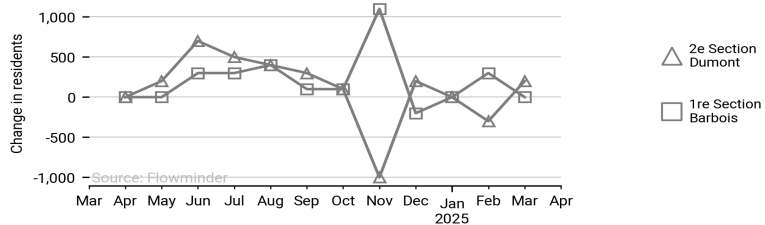


Communal sections in South with largest modelled change in population (01 Apr 24 - 31 Mar 25)

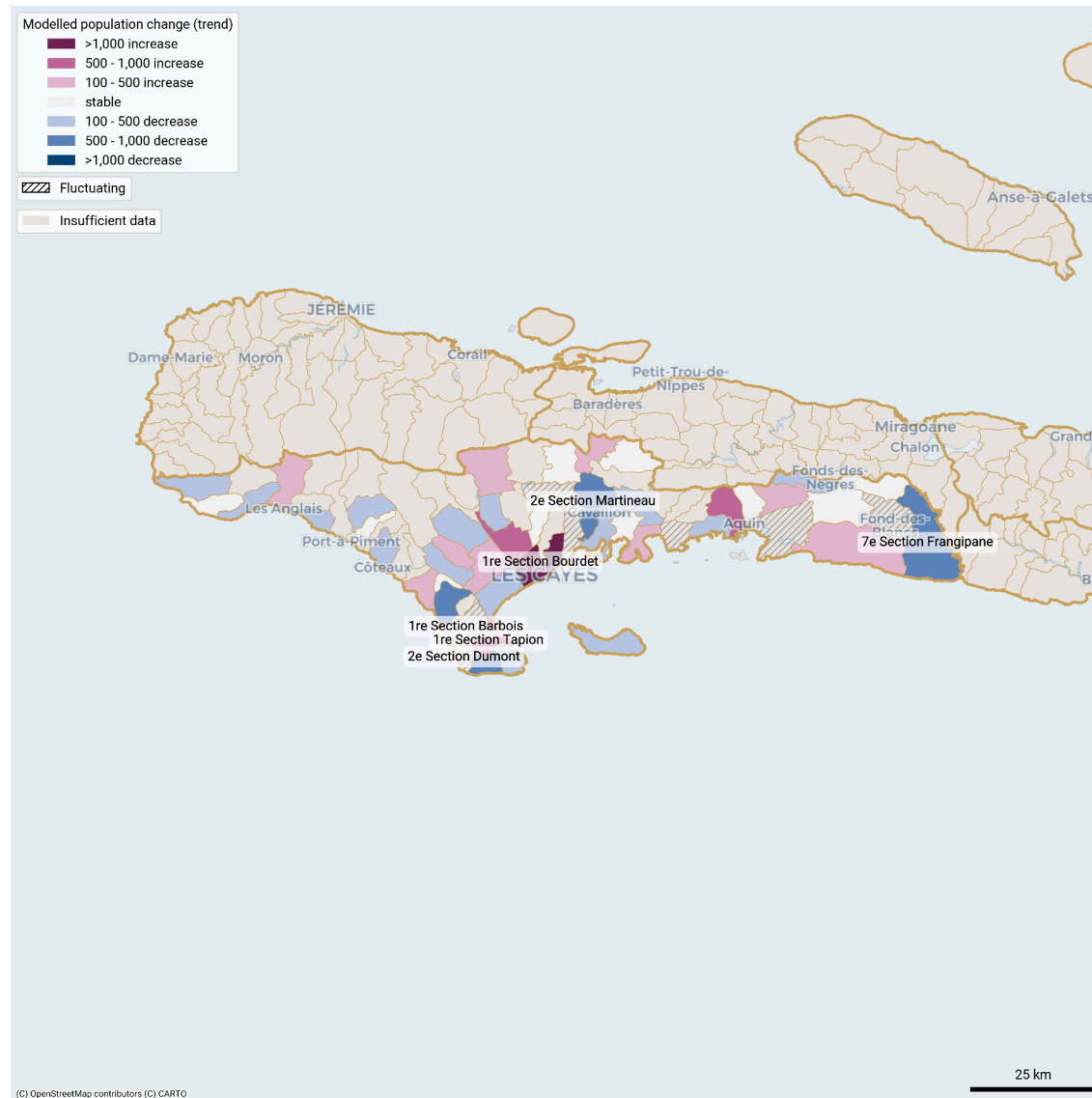
Solid line: estimates. Dotted line: model.



Largest month-to-month changes in resident population in fluctuating communal sections in South -department (01 Apr 24 - 31 Mar 25)



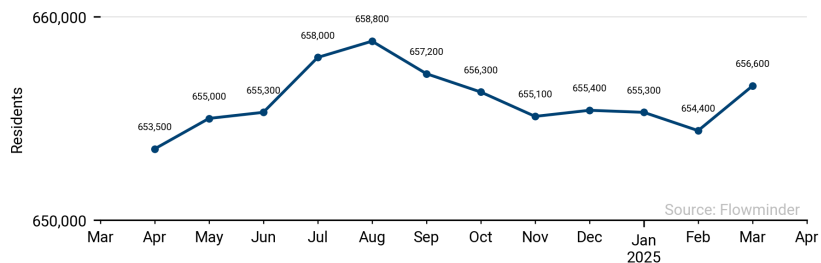
Population trends per communal section in South from 1 Apr 2024 to 31 Mar 2025



These population estimates come from Call Detail Records (CDRs) (mobile phone usage data) and other datasets for reference and adjustments. The estimates provided are not survey estimates, key informant estimates or field observations. If you are unfamiliar with this data source please read our documentation which can be found at [www.flowminder.org](http://www.flowminder.org)

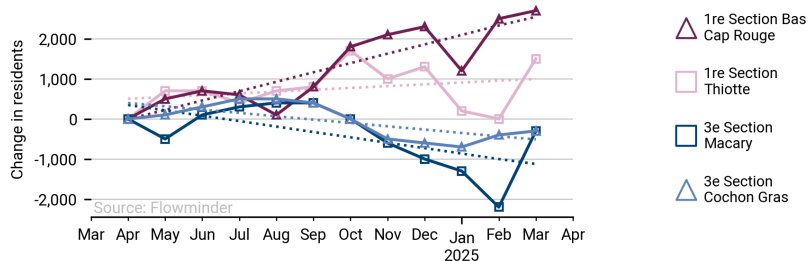
Monthly estimated population in South-east (01 Apr 24 - 31 Mar 25)

Sum of all communal sections incl. those with no CDRs

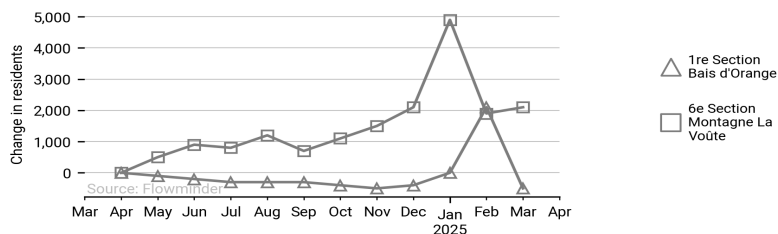


Communal sections in South-east with largest modelled change in population (01 Apr 24 - 31 Mar 25)

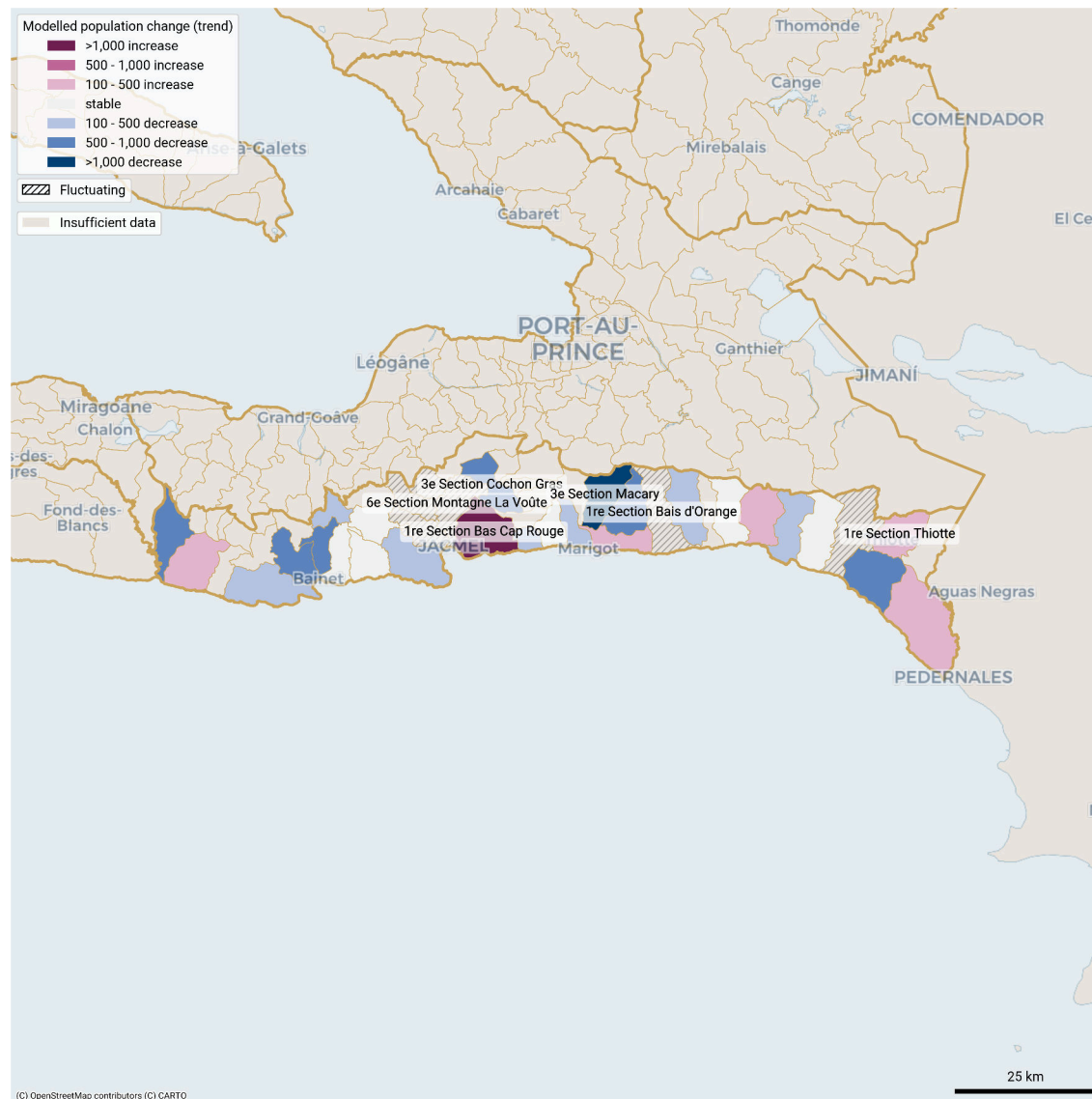
Solid line: estimates. Dotted line: model.



Largest month-to-month changes in resident population in fluctuating communal sections in South-east -department (01 Apr 24 - 31 Mar 25)



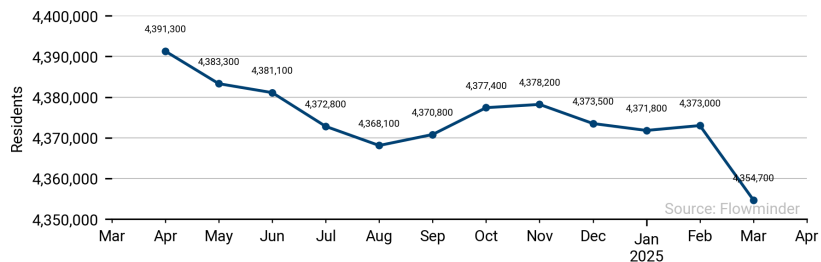
Population trends per communal section in South-east from 1 Apr 2024 to 31 Mar 2025



These population estimates come from Call Detail Records (CDRs) (mobile phone usage data) and other datasets for reference and adjustments. The estimates provided are not survey estimates, key informant estimates or field observations. If you are unfamiliar with this data source please read our documentation which can be found at [www.flowminder.org](http://www.flowminder.org)

Monthly estimated population in West (01 Apr 24 - 31 Mar 25)

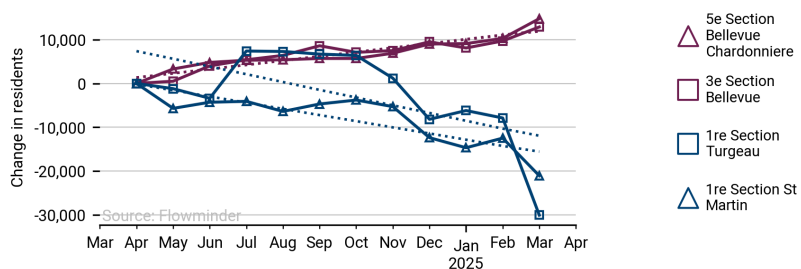
Sum of all communal sections incl. those with no CDRs



Source: Flowminder

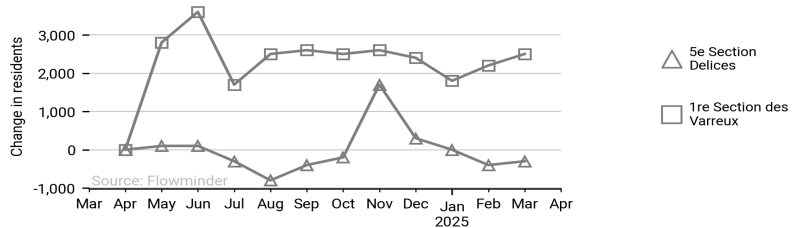
Communal sections in West with largest modelled change in population (01 Apr 24 - 31 Mar 25)

Solid line: estimates. Dotted line: model.



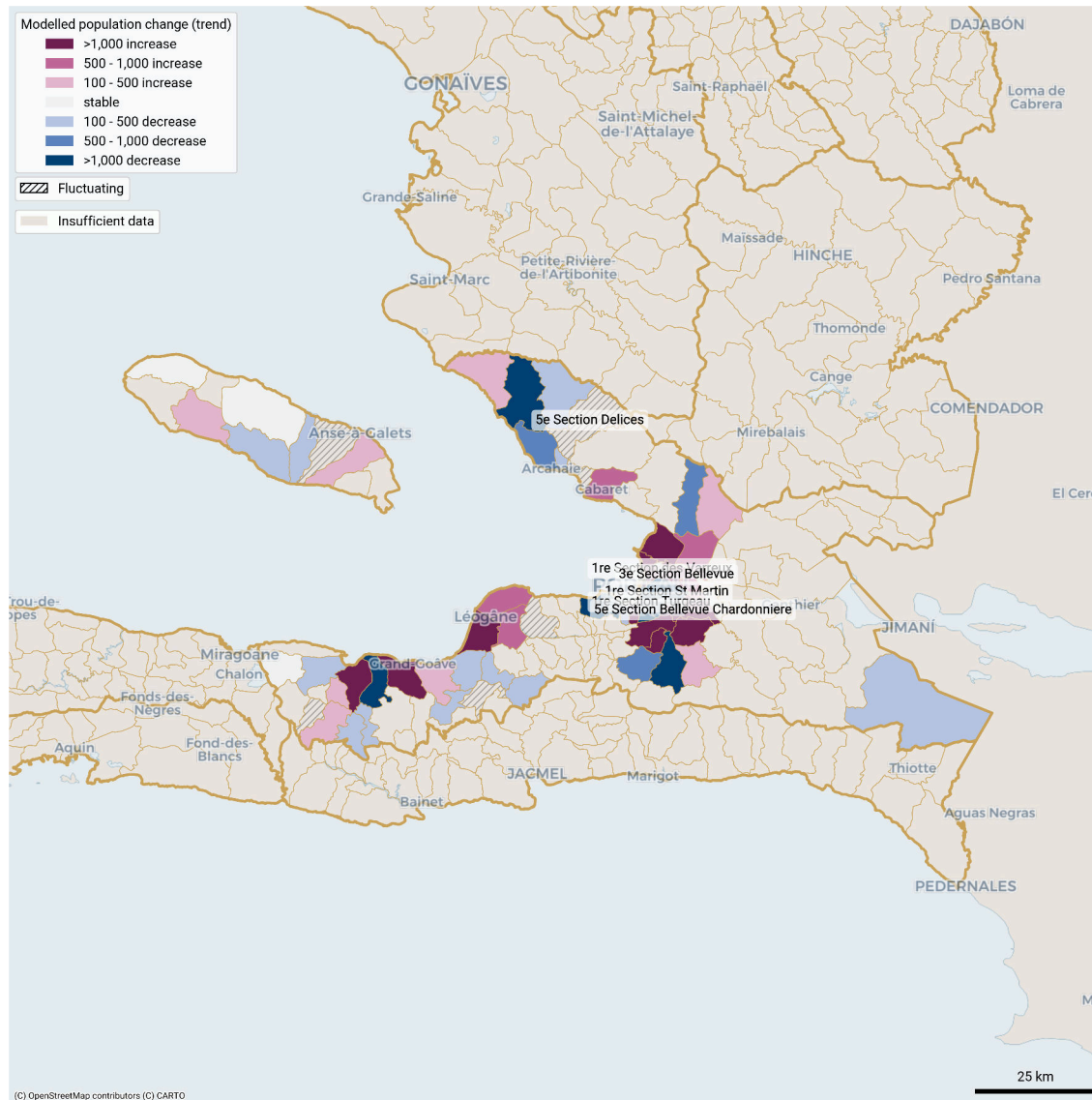
Source: Flowminder

Largest month-to-month changes in resident population in fluctuating communal sections in West - department (01 Apr 24 - 31 Mar 25)



Source: Flowminder

Population trends per communal section in West from 1 Apr 2024 to 31 Mar 2025



These population estimates come from Call Detail Records (CDRs) (mobile phone usage data) and other datasets for reference and adjustments. The estimates provided are not survey estimates, key informant estimates or field observations. If you are unfamiliar with this data source please read our documentation which can be found at [www.flowminder.org](http://www.flowminder.org)

List of communal sections with estimated changes in population where |total change|&gt; 100 (01 Apr 24 - 31 Mar 25): increasing, decreasing or fluctuating

Department	Communal section	Population estimate Mar 2025	Trend type in the last 12 months	Modelled change over the last 12 months	Largest estimated month-to-month change
Artibonite	1re Section Pont Tamarin	249,800	Increasing	2,530	-
Artibonite	6e Section Charrette	115,600	Increasing	3,880	-
Artibonite	2e Section Bois Neuf (Saint-Marc)	64,800	Decreasing	-1,660	-
Artibonite	3e Section Labady	63,800	Decreasing	-2,870	-
Artibonite	5e Section Bocozelle	63,100	Fluctuating	-	500
Artibonite	1re Section Platana	33,400	Increasing	260	-
Artibonite	2e Section Fosse Naboth ou Duvallon	32,900	Increasing	630	-
Artibonite	4e Section Desarmes (Quartier de Desarmes)	29,500	Increasing	200	-
Artibonite	5e Section Bastien	27,400	Fluctuating	-	500
Artibonite	1re Section Deluge	21,300	Decreasing	-700	-
Artibonite	2e Section Bossous	17,700	Increasing	630	-
Artibonite	4e Section Lalouere	15,300	Decreasing	-260	-
Artibonite	3e Section Guillaume Moge (Quartier de Desarmes)	13,100	Increasing	740	-
Centre	1re Section Juanaria	73,100	Fluctuating	-	1,000
Centre	1re Section Renthe Mathe	55,900	Increasing	820	-
Centre	4e Section Crete Brûlée	55,100	Increasing	1,260	-
Centre	2e Section Juampas	36,200	Increasing	780	-
Centre	1re Section Cabral	28,100	Fluctuating	-	300
Centre	2e Section Sarazin	20,400	Increasing	320	-
Centre	3e Section Grand Boucan	17,400	Fluctuating	-	500
Grande'Anse	9e Section Fond Rouge Torbeck	32,900	Increasing	1,510	-
Grande'Anse	8e Section Fond Rouge Dahere	30,500	Decreasing	-270	-
Grande'Anse	1re Section Grandoit	21,200	Increasing	520	-

Department	Communal section	Population estimate Mar 2025	Trend type in the last 12 months	Modelled change over the last 12 months	Largest estimated month-to-month change
Grande'Anse	3e Section Haute Guinaudee	20,800	Increasing	450	-
Grande'Anse	3e Section Desormeau	15,900	Decreasing	-440	-
Grande'Anse	1re Section Dejean	14,500	Increasing	190	-
Grande'Anse	1re Section Matador (Jorgue)	14,500	Increasing	420	-
Grande'Anse	6e Section Îles Blanches	14,300	Decreasing	-160	-
Grande'Anse	1re Section Duquillon	12,700	Decreasing	-260	-
Grande'Anse	5e Section Baliverne	11,700	Fluctuating	-	800
Grande'Anse	2e Section Espere	11,500	Decreasing	-370	-
Grande'Anse	2e Section Haute Voldrogue	11,400	Decreasing	-620	-
Grande'Anse	4e Section la Seringue	10,500	Decreasing	-460	-
Grande'Anse	1re Section Desormeau ou Bonbon	10,000	Decreasing	-120	-
Grande'Anse	7e Section Marfranc ou Grande Riviere	8,600	Decreasing	-230	-
Grande'Anse	1re Section Anse du Clerc	8,200	Decreasing	-140	-
Grande'Anse	4e Section les Gommiers	7,700	Increasing	210	-
Grande'Anse	3e Section Îlet a Pierre Joseph	7,500	Decreasing	-340	-
Grande'Anse	1re Section Bernagousse	6,100	Increasing	240	-
Grande'Anse	2e Section Fond d'laque	6,000	Decreasing	-410	-
Grande'Anse	5e Section Duchity	5,800	Decreasing	-340	-
Grande'Anse	1re Section Bariadelle	4,700	Decreasing	-250	-
Grande'Anse	3e Section Garcasse	3,700	Decreasing	-710	-
Nippes	1re Section Chalon	43,500	Increasing	2,850	-
Nippes	2e Section Grande-Riviere-Joly	18,200	Increasing	160	-
Nippes	2e Section Tiby	14,700	Increasing	690	-

These population estimates come from Call Detail Records (CDRs) (mobile phone usage data) and other datasets for reference and adjustments. The estimates provided are not survey estimates, key informant estimates or field observations. If you are unfamiliar with this data source please read our documentation which can be found at [www.flowminder.org](http://www.flowminder.org)

List of communal sections with estimated changes in population where |total change|&gt; 100 (01 Apr 24 - 31 Mar 25): increasing, decreasing or fluctuating

Department	Communal section	Population estimate Mar 2025	Trend type in the last 12 months	Modelled change over the last 12 months	Largest estimated month-to-month change
Nippes	1re Section Fond des Lianes	13,300	Decreasing	-110	-
Nippes	2e Section Fond-des-Negres ou Morne Brice	12,200	Increasing	660	-
Nippes	4e Section St-Michel	11,900	Fluctuating	-	400
Nippes	1re Section Salagnac	10,100	Increasing	150	-
Nippes	1re Section Baconnois-Grand-Fond	9,300	Fluctuating	-	600
Nippes	4e Section la Plaine	9,200	Fluctuating	-	200
Nippes	1re Section l'Asile ou Nan Paul	9,000	Fluctuating	-	1,800
Nippes	3e Section Vassal Labiche	9,000	Fluctuating	-	400
Nippes	3e Section Fond Tortue	8,900	Increasing	240	-
Nippes	2e Section Bezin II	8,600	Fluctuating	-	300
Nippes	2e Section Belle Riviere	8,400	Decreasing	-380	-
Nippes	3e Section Lieve ou Vigny	8,400	Fluctuating	-	1,900
Nippes	1re Section Baconnois-Barreau	8,300	Fluctuating	-	1,000
Nippes	3e Section Pernerle	8,100	Decreasing	-260	-
Nippes	3e Section Arnaud (Morcou)	6,900	Decreasing	-470	-
Nippes	1er Section Bouzi	6,700	Decreasing	-120	-
Nippes	3e Section Saut du Baril	6,100	Increasing	710	-
Nippes	4e Section Morisseau	4,900	Increasing	150	-
Nippes	1re Section Grand-Boucan	4,300	Fluctuating	-	800
North	2e Section Haut du Cap	180,200	Increasing	5,300	-
North	3e Section Petit Anse	115,400	Increasing	580	-
North	5e Section Ravine Desroches	71,700	Increasing	370	-
North	1re Section Savannette	32,600	Increasing	210	-

Department	Communal section	Population estimate Mar 2025	Trend type in the last 12 months	Modelled change over the last 12 months	Largest estimated month-to-month change
North	3e Section Roucou	32,300	Increasing	210	-
North	2e Section Bas de l'Acul (Basse Plaine)	23,200	Increasing	120	-
North	1re Section Ballon	22,700	Increasing	210	-
North	2e Section Bas Petit Borgne	21,700	Increasing	170	-
North	2e Section Chabotte	19,300	Decreasing	-180	-
North	1re Section Morne Rouge	18,100	Decreasing	-570	-
North	2e Section Morne Pele	15,900	Increasing	260	-
North	1re Section Basse Plaine (Quartier Morin)	15,600	Increasing	620	-
North	2e Section Bonnet a l'Eveque	14,600	Increasing	310	-
North	2e Section Bois de Lance (Limonade)	11,300	Increasing	100	-
North	6e Section Bras Gauche	9,200	Increasing	200	-
North	1re Section Camp-Louise	9,000	Decreasing	-370	-
North	5e Section la Trouble	6,500	Decreasing	-120	-
North-East	1re Section Haut Maribahoux	108,200	Increasing	1,920	-
North-East	1re Section Dumas	30,300	Increasing	320	-
North-West	3e Section Aubert	107,000	Increasing	890	-
North-West	5e Section Dessources	24,100	Increasing	130	-
North-West	3e Section Cotes de Fer	12,600	Decreasing	-220	-
North-West	3e Section Plaine d'Orange	6,000	Decreasing	-340	-
South	1re Section Bourdet	95,300	Increasing	5,230	-
South	1re Section Boury	31,700	Decreasing	-490	-
South	3e Section Solon	26,700	Decreasing	-300	-
South	3e Section Cosse	22,300	Increasing	330	-

These population estimates come from Call Detail Records (CDRs) (mobile phone usage data) and other datasets for reference and adjustments. The estimates provided are not survey estimates, key informant estimates or field observations. If you are unfamiliar with this data source please read our documentation which can be found at [www.flowgeek.org](http://www.flowgeek.org)

List of communal sections with estimated changes in population where |total change|&gt; 100 (01 Apr 24 - 31 Mar 25): increasing, decreasing or fluctuating

Department	Communal section	Population estimate Mar 2025	Trend type in the last 12 months	Modelled change over the last 12 months	Largest estimated month-to-month change
South	2e Section Champlois	19,700	Increasing	480	-
South	1re Section Boileau	16,800	Decreasing	-400	-
South	3e Section Brodequin	16,200	Increasing	650	-
South	2e Section Martineau	16,200	Decreasing	-990	-
South	1re Section Levy Mersan	15,600	Decreasing	-160	-
South	1re Section Île a Vache	15,200	Decreasing	-390	-
South	2e Section Meloniere	15,000	Decreasing	-370	-
South	1re Section Beaulieu	14,700	Increasing	330	-
South	2e Section Fonfrede	14,600	Increasing	580	-
South	2e Section Berault	14,500	Increasing	380	-
South	2e Section Anse a Drick	14,300	Decreasing	-560	-
South	2e Section Bellevue	14,000	Increasing	160	-
South	3e Section Grenodiere	13,500	Fluctuating	-	500
South	2e Section Baie Dumesle	13,300	Increasing	250	-
South	1re Section Macean	12,100	Fluctuating	-	100
South	1re Section Barbois	12,100	Fluctuating	-	1,000
South	5e Section Laroque	11,200	Increasing	490	-
South	2e Section Despas	10,800	Decreasing	-140	-
South	7e Section Frangipane	10,700	Decreasing	-900	-
South	3e Section Bony	10,300	Decreasing	-100	-
South	1re Section Maniche	9,100	Fluctuating	-	100
South	1re Section Tapion	9,000	Increasing	870	-
South	8e Section Colline a Mongons	8,400	Decreasing	-100	-

Department	Communal section	Population estimate Mar 2025	Trend type in the last 12 months	Modelled change over the last 12 months	Largest estimated month-to-month change
South	3e Section Trichet	8,200	Decreasing	-340	-
South	2e Section Dumont	8,100	Fluctuating	-	1,200
South	6e Section Boulmier	8,100	Fluctuating	-	900
South	4e Section Zanglais	8,000	Decreasing	-460	-
South	2e Section Balais	7,300	Decreasing	-230	-
South	9e Section Fond des Blancs	7,200	Fluctuating	-	500
South	2e Section Debouchette	7,100	Decreasing	-730	-
South	1re Section Fonds Palmiste	6,900	Increasing	190	-
South	4e Section Flamands	6,500	Increasing	370	-
South	3e Section Loby	5,700	Decreasing	-110	-
South	5e Section Sucrierie Henri	5,400	Decreasing	-170	-
South	4e Section Dalmette	3,600	Decreasing	-200	-
South-East	1re Section Bas Cap Rouge	84,700	Increasing	2,550	-
South-East	6e Section Montagne La Voûte	45,000	Fluctuating	-	2,800
South-East	1re Section Thiotte	28,300	Increasing	490	-
South-East	1re Section Boucan Guillaume	23,900	Increasing	310	-
South-East	11e Section La Montagne	19,800	Decreasing	-110	-
South-East	1re Section Corail Sout	19,700	Decreasing	-110	-
South-East	9e Section Bas des Gris Gris	17,300	Decreasing	-380	-
South-East	1re Section Colline des Chenes ou Bodarie	16,800	Fluctuating	-	400
South-East	5e Section Bel Air	16,700	Increasing	200	-
South-East	3e Section Macary	16,400	Decreasing	-1,470	-
South-East	4e Section Fond Jean Noël	16,400	Decreasing	-640	-

These population estimates come from Call Detail Records (CDRs) (mobile phone usage data) and other datasets for reference and adjustments. The estimates provided are not survey estimates, key informant estimates or field observations. If you are unfamiliar with this data source please read our documentation which can be found at [www.flowgeek.org](http://www.flowgeek.org)

List of communal sections with estimated changes in population where |total change|&gt; 100 (01 Apr 24 - 31 Mar 25): increasing, decreasing or fluctuating

Department	Communal section	Population estimate Mar 2025	Trend type in the last 12 months	Modelled change over the last 12 months	Largest estimated month-to-month change
South-East	1re Section Gris Gris	16,300	Increasing	290	-
South-East	6e Section Jamais Vu	15,400	Decreasing	-570	-
South-East	5e Section Bas de Grandou	14,500	Decreasing	-540	-
South-East	5e Section Savane Dubois	14,300	Increasing	360	-
South-East	2e Section La Vallee de Bainet ou Ternier	13,000	Decreasing	-290	-
South-East	1re Section Ravine Normande	12,200	Decreasing	-160	-
South-East	2e Section Mabriole	11,800	Decreasing	-120	-
South-East	3e Section Cochon Gras	11,500	Decreasing	-910	-
South-East	10e Section La Vanneau	11,300	Fluctuating	-	1,700
South-East	8e Section Bas Coq Chante	10,700	Fluctuating	-	1,100
South-East	1re Section Bais d'Orange	10,300	Fluctuating	-	2,100
South-East	3e Section La Vallee de Bainet	9,000	Decreasing	-750	-
South-East	2e Section Pot de Chambre	8,600	Decreasing	-550	-
South-East	6e Section Pichon	8,400	Decreasing	-180	-
South-East	9e Section Haut Coq Chante	6,100	Fluctuating	-	200
West	1re Section St Martin	486,300	Decreasing	-15,400	-
West	1re Section Turgeau	483,300	Decreasing	-19,330	-
West	3e Section Martissant	281,000	Increasing	3,170	-
West	5e Section Bellevue Chardonniere	271,900	Increasing	10,660	-
West	10e Section Thor	271,700	Decreasing	-1,120	-
West	11e Section Riviere Froide	216,400	Decreasing	-3,880	-
West	2e Section Morne l'Hopital	189,000	Decreasing	-7,810	-
West	11e Section Ravine Seche	131,700	Increasing	3,110	-

Department	Communal section	Population estimate Mar 2025	Trend type in the last 12 months	Modelled change over the last 12 months	Largest estimated month-to-month change
West	3e Section Etang du Jonc	129,400	Increasing	7,220	-
West	2e Section des Varreux (Croix-Des-Bouquets)	129,300	Increasing	580	-
West	1re Section Dessources	125,200	Increasing	2,210	-
West	3e Section Bellevue	121,900	Increasing	10,550	-
West	3e Section des Vases	108,200	Decreasing	-640	-
West	1re Section des Varreux (Croix-Des-Bouquets)	79,800	Increasing	2,270	-
West	1re Section Boucassin (Cabaret)	67,600	Increasing	610	-
West	1re Section Tete-a-Boeuf	56,800	Increasing	1,820	-
West	9e Section Bizoton	56,400	Decreasing	-490	-
West	7e Section Gerard	56,000	Increasing	360	-
West	2e Section Petite Riviere	55,400	Increasing	520	-
West	1re Section Fonds-Verrettes	52,500	Decreasing	-200	-
West	2e Section des Varreux (Cite Soleil)	45,600	Increasing	3,520	-
West	3e Section Grande Rivere	41,000	Increasing	990	-
West	9e Section des Crochus	38,000	Decreasing	-710	-
West	1re Section des Varreux (Cite Soleil)	37,500	Fluctuating	-	2,800
West	2e Section Petite Source	35,900	Fluctuating	-	1,600
West	4e Section Bellevue	35,200	Increasing	960	-
West	1re Section Bino	35,000	Decreasing	-280	-
West	3e Section Sourcailles	32,800	Decreasing	-1,360	-
West	1re Section Montagne Noire	26,900	Increasing	1,750	-
West	1re Section Palma	26,300	Increasing	150	-
West	2e Section Boucassin	23,000	Fluctuating	-	700

These population estimates come from Call Detail Records (CDRs) (mobile phone usage data) and other datasets for reference and adjustments. The estimates provided are not survey estimates, key informant estimates or field observations. If you are unfamiliar with this data source please read our documentation which can be found at [www.flowminder.org](http://www.flowminder.org)

List of communal sections with estimated changes in population where |total change|&gt; 100 (01 Apr 24 - 31 Mar 25): increasing, decreasing or fluctuating

Department	Communal section	Population estimate Mar 2025	Trend type in the last 12 months	Modelled change over the last 12 months	Largest estimated month-to-month change
West	12e Section des Fourques	22,100	Decreasing	-1,600	-
West	3e Section Petit Boucan	18,600	Fluctuating	-	700
West	4e Section Fond de Boudin	15,500	Fluctuating	-	1,100
West	4e Section Bellevue la Montagne	14,200	Increasing	3,460	-
West	4e Section des Crochus	11,700	Increasing	190	-
West	10e Section Fond d'Oie	11,100	Decreasing	-270	-
West	6e Section Matheux	9,500	Decreasing	-160	-
West	4e Section Montrouis	8,600	Increasing	160	-
West	8e Section des Platons	8,600	Increasing	120	-
West	5e Section Delices	7,900	Fluctuating	-	1,900
West	7e Section des Platons	6,500	Increasing	250	-
West	9e Section des Palmes	6,200	Decreasing	-110	-
West	5e Section Grand Fond	6,000	Increasing	180	-
West	3e Section Trou Louis	5,800	Decreasing	-110	-
West	2e Section Bongars	5,100	Decreasing	-670	-
West	3e Section Grande Source	4,600	Decreasing	-290	-
West	2e Section Grand Vide	4,400	Increasing	190	-
West	5e Section Grande Colline	3,900	Decreasing	-190	-
West	2e Section Fonds Baptiste	3,700	Decreasing	-1,670	-
West	5e Section Palmiste a Vin	3,500	Decreasing	-300	-
West	1re Section Boucassin (Arcahaie)	3,500	Decreasing	-120	-
West	6e Section Trou Canari	2,900	Fluctuating	-	500
West	10e Section des Palmes	2,400	Decreasing	-380	-

Department	Communal section	Population estimate Mar 2025	Trend type in the last 12 months	Modelled change over the last 12 months	Largest estimated month-to-month change
West	12e Section Cormiers	1,700	Decreasing	-260	-

These population estimates come from Call Detail Records (CDRs) (mobile phone usage data) and other datasets for reference and adjustments. The estimates provided are not survey estimates, key informant estimates or field observations. If you are unfamiliar with this data source please read our documentation which can be found at [www.flowgeek.org](http://www.flowgeek.org)



### Authors And Funders

This report was authored by the Flowminder Foundation.

This work was made possible by funding from the UK Foreign, Commonwealth and Development Office (FCDO).

### Acknowledgements

This study was made possible thanks to the anonymised (aggregated) Call Detail Records provided by a mobile network operator in Haiti.

### How to use this report

We provide population estimates that take into account population movements within Haiti, per month and per communal section. The current crisis has led to large population movements, particularly of internally displaced people (e.g. [IDP round 2](#)), which can result in population statistics becoming outdated over a few months, and therefore impairing preparedness efforts (e.g. hazard population exposure estimation, needs assessment, service and contingency planning).

### Indicators presented

**Modelled change (trend):** the predicted population change for the reporting period from all 12 monthly estimates, which smoothes out monthly variations (linear regression).

**Estimated change:** the difference in the estimated population between the first and last months of the 12 month reporting period, which does not reflect any monthly variation within.

For communal sections with fewer than 10 months of resident estimates during the reporting period, we do not make a trend classification (insufficient data). For monthly population estimates at the department level, we carry forward the latest estimate to fill missing months in a communal section so that the aggregated changes at the department level are only based on observed CDR-derived mobility.

For communal sections with fast changing populations, we categorised them as 'increasing', 'decreasing', 'stable', when there is little to no change; or as 'fluctuating' when large month-to-month changes prevented us from detecting a trend.

### Report's data

This report uses our v4.0 dataset ([documentation](#), [release notes](#)), available at <https://haiti.mobility-dashboard.org>.

*This report and its contents may only be shared with attribution to the Flowminder Foundation and Digicel Haiti. Adaptation is permitted as long as the changes are indicated and the Flowminder Foundation and Digicel Haiti are cited. Use of the report and its contents is limited to humanitarian and development purposes.*

*Disclaimer of Warranties and Limitation of Liability: To the extent possible, Flowminder and Digicel offer this report and its contents as-is and as-available, and make no representations or warranties of any kind concerning this report and its contents, whether express, implied, statutory, or other. This includes, without limitation, warranties of title, merchantability, fitness for a particular purpose, non-infringement, absence of latent or other defects, accuracy, or the presence or absence of errors, whether or not known or discoverable.*

*To the extent possible, in no event will Flowminder or Digicel be liable on any legal theory (including, without limitation, negligence) or otherwise for any direct, special, indirect, incidental, consequential, punitive, exemplary, or other losses, costs, expenses, or damages arising out of the use of the report or its contents, even if Flowminder or Digicel have been advised of the possibility of such losses, costs, expenses, or damages. The disclaimer of warranties and limitation of liability provided above shall be interpreted in a manner that, to the extent possible, most closely approximates an absolute disclaimer and waiver of all liability.*

### Data privacy & governance

No personal data, such as an individual's identity, demographics, location, contacts or movements, is made available to the government or any other third party at any time. All results produced by Flowminder are aggregated results (for example, subscriber density in a given municipality), which means that they do not contain any information about individual subscribers.

This data is fully anonymised. This approach complies with the European Union's General Data Protection Regulation (EU GDPR2016/679). Data is processed on a server installed behind the mobile network operator's firewall in Haiti, and no personal data leaves the operator's premises.

### Data considerations

The estimates shown are our best current assessment of movements. However, there are a number of uncertainties. The information should be interpreted together with other available evidence.

**For more information about our methods**, please read our Haiti Mobility Data Indicators documentation on residents and relocation at [here](#).

### Data Sources

Pseudonymised Call Detail Records: Digicel Haiti

CDR-based data products: Flowminder

Phone survey data: [HT PS 2023](#)

Field survey data: [MSNA 2022](#) and [MSNA 2024](#)

Population estimates: [UN data](#); IHSI 2015; and IHSI 2020.

**The following citation is required when using the data and information included in this report:**

**Flowminder Foundation, Apr 2025: Preparedness report, Mobility situation in Haiti from 01 Apr 2024 to 31 Mar 2025**

For more information on the terms and conditions of Flowminder's reports and information products, please visit [flowminder.org](https://flowminder.org)