

Communal sections with the largest modelled change in population between 01 Feb 24 - 31 Jan 25

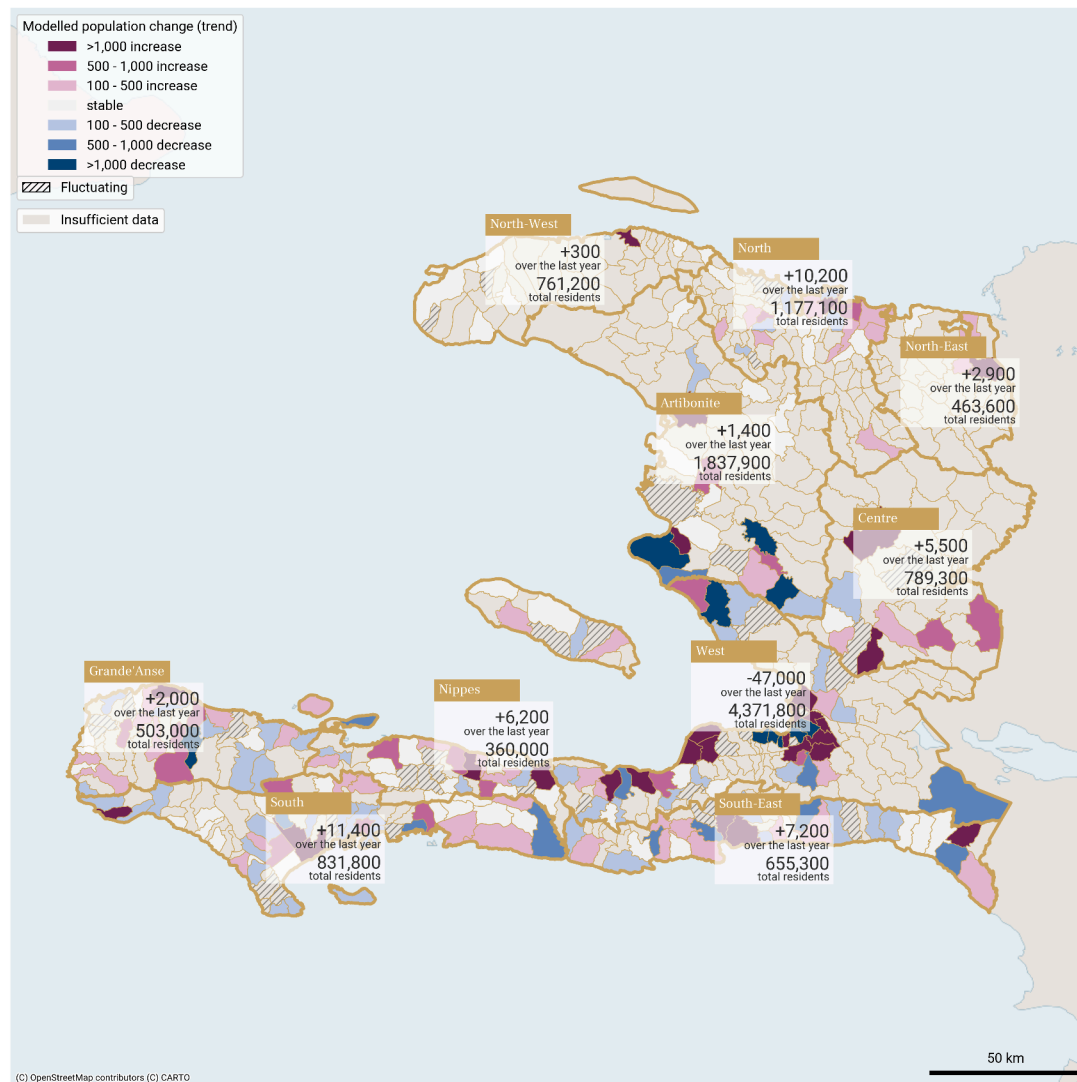
Department	Communal section	Population estimate Jan 2025	Trend type in the last 12 months	Modelled change over the last 12 months
West	1re Section Turgeau	507,200	Decreasing	-23,930
West	1re Section St Martin	492,700	Decreasing	-11,330
West	10e Section Thor	270,100	Decreasing	-8,010
West	5e Section Bellevue Chardonniere	266,200	Increasing	6,780
South	1re Section Bourdet	94,200	Increasing	6,180

### Key observations for the period 01 Feb 24 - 31 Jan 25

- Of the communal sections for which we can provide monthly population estimates (269), 10.7% (29) exhibited large overall increases (> 1,000) while 3.7% (10) saw large overall decreases (< -1,000).
  - The largest changes were within the Port-au-Prince Metropolitan Area (ZMPAP), likely driven by insecurity due to gang violence, with the largest decreases in 1re Section Turgeau and 1re Section St. Martin (suggesting significant insecurity), the largest increase in 5e Section Bellevue Chardonniere, and high levels of mobility between these three sections.
  - Outside West, there were large increases in 1re Section Bourdet (Les Cayes) in South, as well as 2e Section Haut du Cap (Cap Haitien) in North.
- 13.4% (36) of communal sections with recent estimates had fluctuating populations
  - The observed fluctuation in monthly population estimates in 5e Section Bocozele (Artibonite) suggests that people who were displaced due to insecurity in Oct. 2024 mostly returned by Jan. 2025.
- At the department level, **West** saw the largest estimated change, shrinking by about 47,000 people, mostly occurring in the 1st half of the study period, then levelling out.
- Conversely, **Centre** and **North** exhibited relatively steady growth. Elsewhere, **North-West**, **South**, **South-East**, **Nippes**, and **Grande-Anse** all showed overall growth, with steady increases early in the reporting period before leveling off, or following a downward trend, in the latter half.

For more information on the indicators presented, how to use this report and data sources, please see the last page.

Modelled population trends (communal sections) and change estimates (departments) between 1 Feb 2024 and 31 Jan 2025

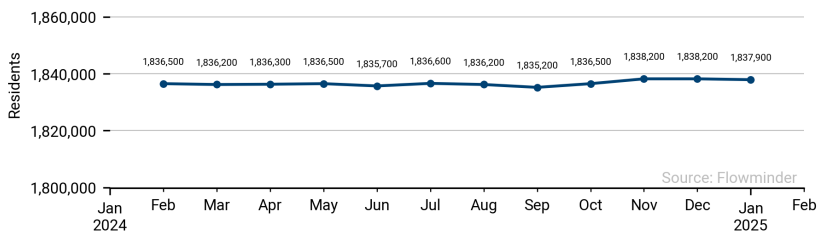


(C) OpenStreetMap contributors (C) CARTO

These population estimates come from Call Detail Records (CDRs) (mobile phone usage data) and other datasets for reference and adjustments. The estimates provided are not survey estimates, key informant estimates or field observations. If you are unfamiliar with this data source please read our documentation which can be found at [www.flowgeek.org](http://www.flowgeek.org)

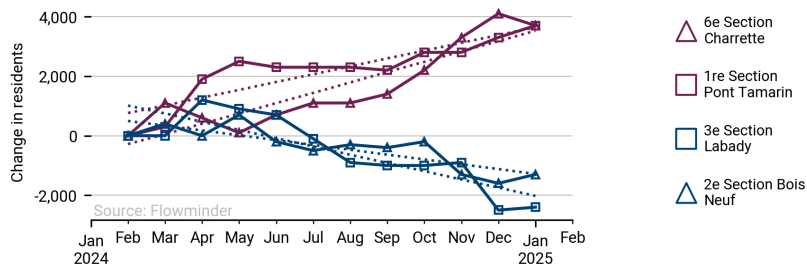
Monthly estimated population in Artibonite (01 Feb 24 - 31 Jan 25)

Sum of all communal sections incl. those with no CDRs

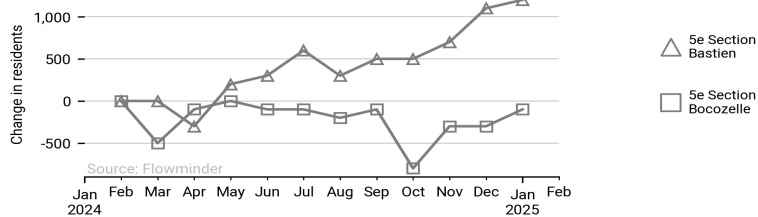


Communal sections in Artibonite with largest modelled change in population (01 Feb 24 - 31 Jan 25)

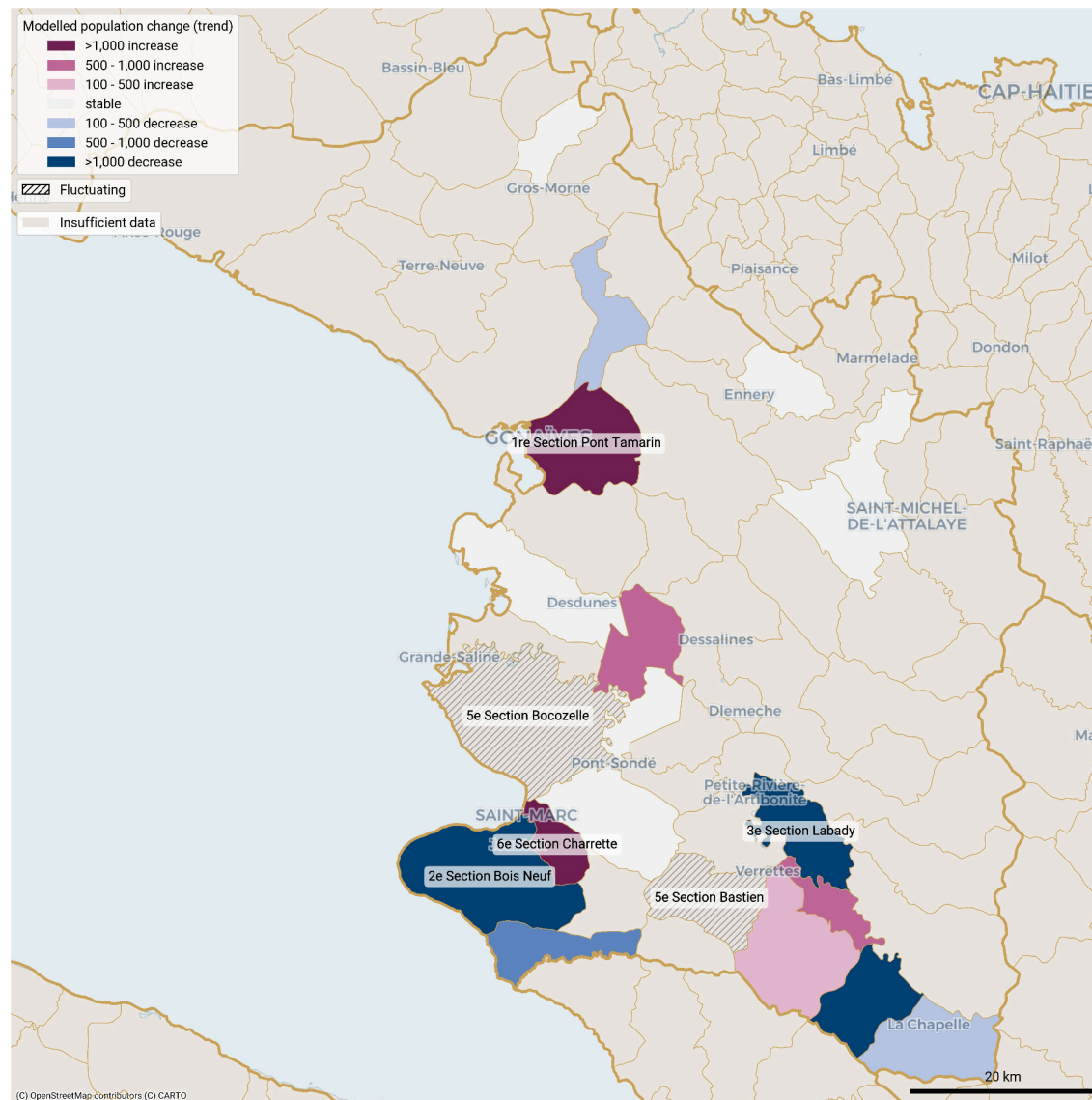
Solid line: estimates. Dotted line: model.



Largest month-to-month changes in resident population in fluctuating communal sections in Artibonite -department (01 Feb 24 - 31 Jan 25)



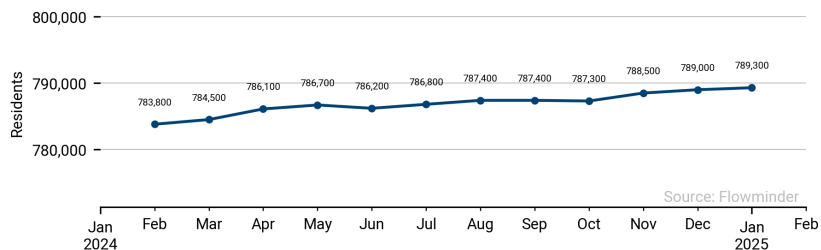
Population trends per communal section in Artibonite from 1 Feb 2024 to 31 Jan 2025



These population estimates come from Call Detail Records (CDRs) (mobile phone usage data) and other datasets for reference and adjustments. The estimates provided are not survey estimates, key informant estimates or field observations. If you are unfamiliar with this data source please read our documentation which can be found at [www.flowminder.org](http://www.flowminder.org)

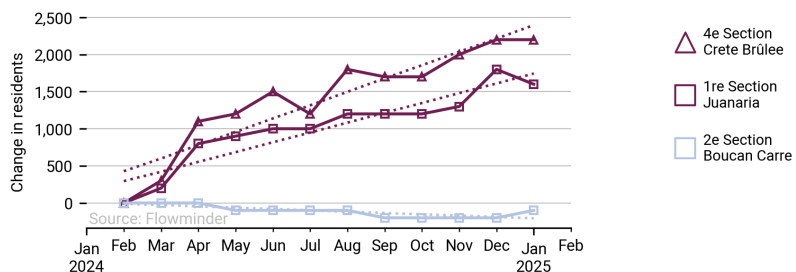
Monthly estimated population in Centre (01 Feb 24 - 31 Jan 25)

Sum of all communal sections incl. those with no CDRs

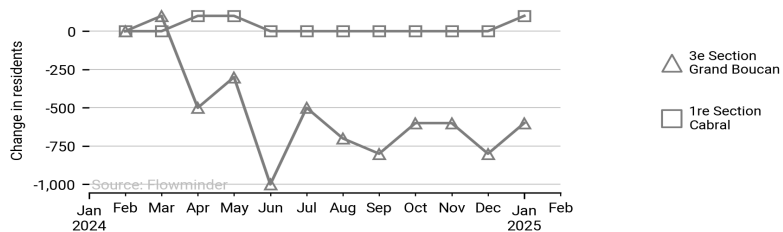


Communal sections in Centre with largest modelled change in population (01 Feb 24 - 31 Jan 25)

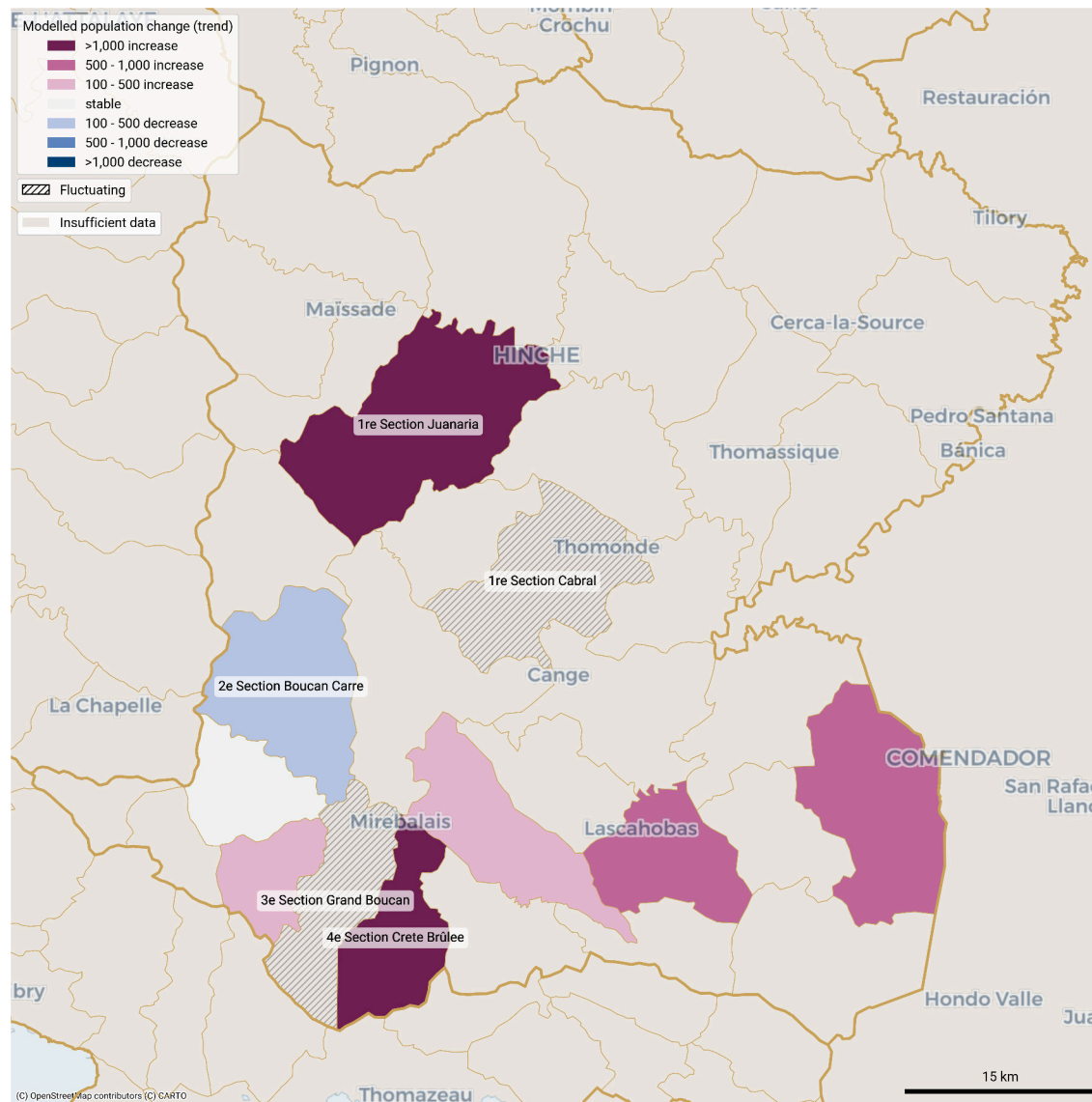
Solid line: estimates. Dotted line: model.



Largest month-to-month changes in resident population in fluctuating communal sections in Centre -department (01 Feb 24 - 31 Jan 25)



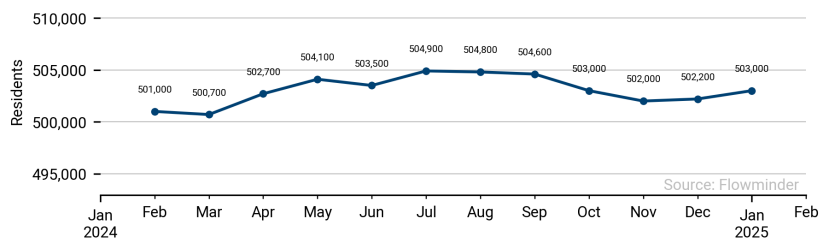
Population trends per communal section in Centre from 1 Feb 2024 to 31 Jan 2025



These population estimates come from Call Detail Records (CDRs) (mobile phone usage data) and other datasets for reference and adjustments. The estimates provided are not survey estimates, key informant estimates or field observations. If you are unfamiliar with this data source please read our documentation which can be found at [www.flowminder.org](http://www.flowminder.org)

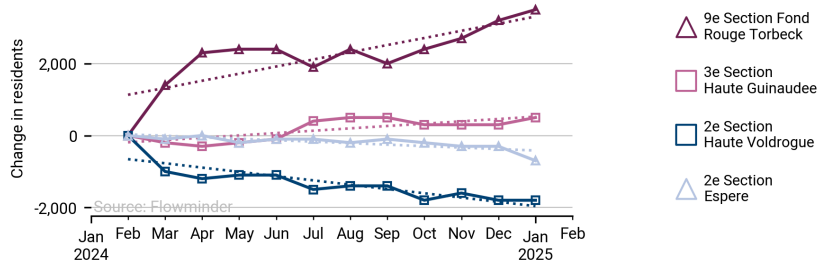
Monthly estimated population in Grande'Anse (01 Feb 24 - 31 Jan 25)

Sum of all communal sections incl. those with no CDRs

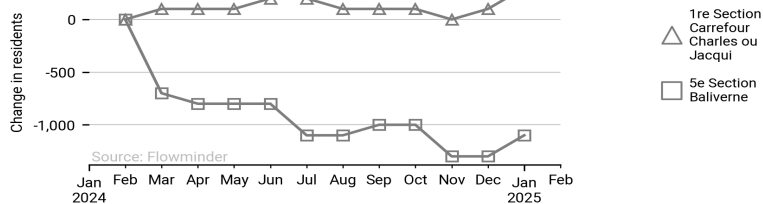


Communal sections in Grande'Anse with largest modelled change in population (01 Feb 24 - 31 Jan 25)

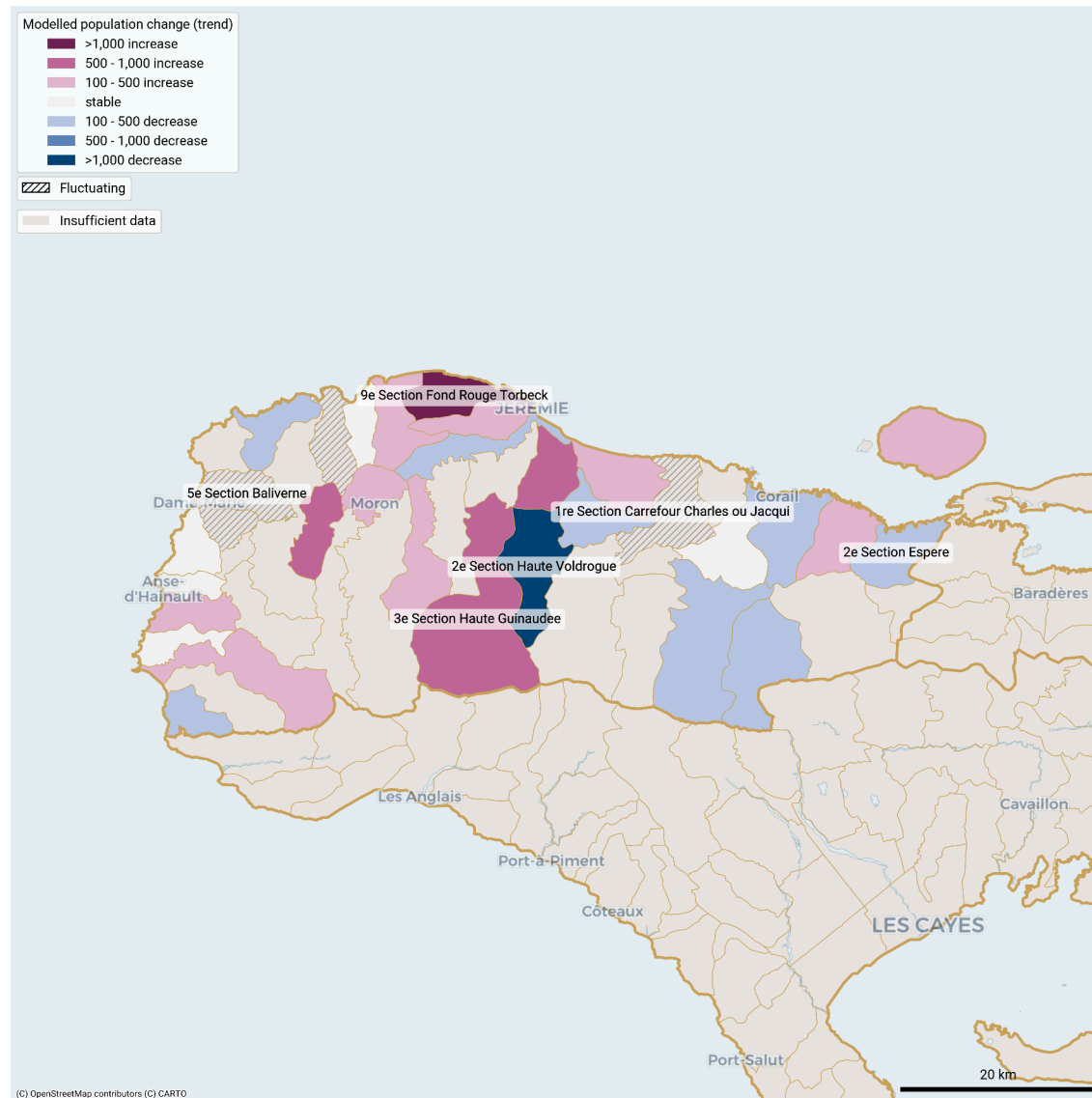
Solid line: estimates. Dotted line: model.



Largest month-to-month changes in resident population in fluctuating communal sections in Grande'Anse -department (01 Feb 24 - 31 Jan 25)



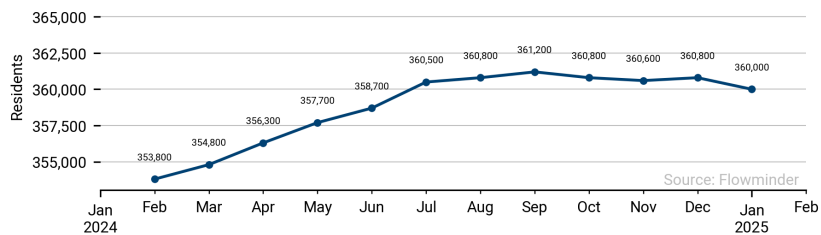
Population trends per communal section in Grande'Anse from 1 Feb 2024 to 31 Jan 2025



These population estimates come from Call Detail Records (CDRs) (mobile phone usage data) and other datasets for reference and adjustments. The estimates provided are not survey estimates, key informant estimates or field observations. If you are unfamiliar with this data source please read our documentation which can be found at [www.flowminder.org](http://www.flowminder.org)

### Monthly estimated population in Nippes (01 Feb 24 - 31 Jan 25)

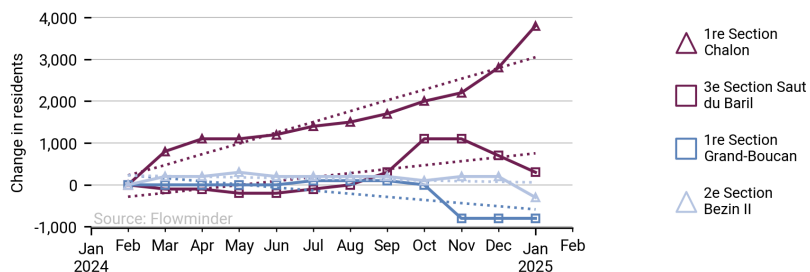
Sum of all communal sections incl. those with no CDRs



Source: Flowminder

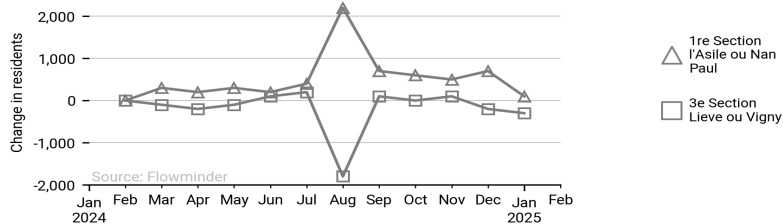
### Communal sections in Nippes with largest modelled change in population (01 Feb 24 - 31 Jan 25)

Solid line: estimates. Dotted line: model.



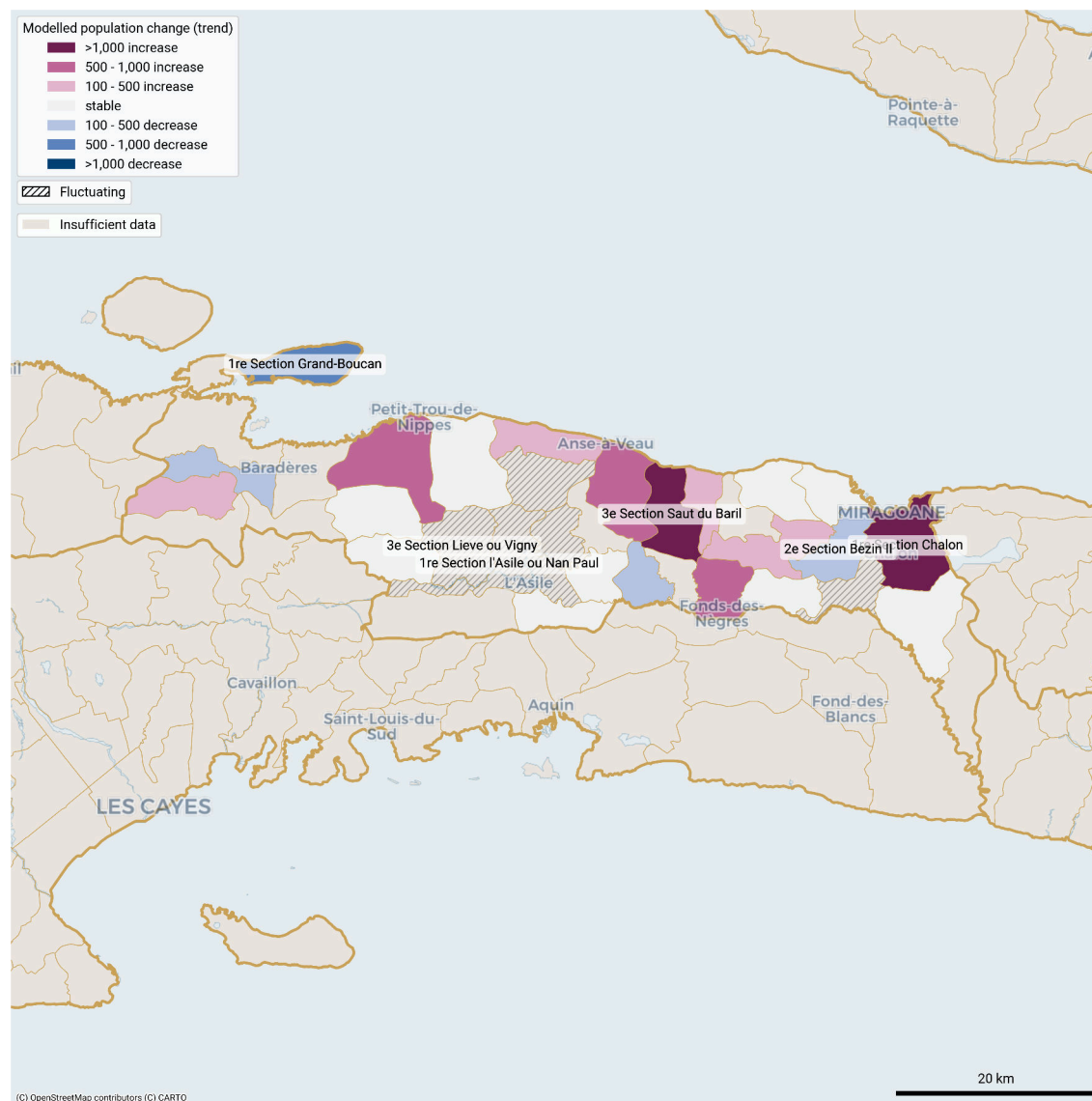
Source: Flowminder

### Largest month-to-month changes in resident population in fluctuating communal sections in Nippes -department (01 Feb 24 - 31 Jan 25)



Source: Flowminder

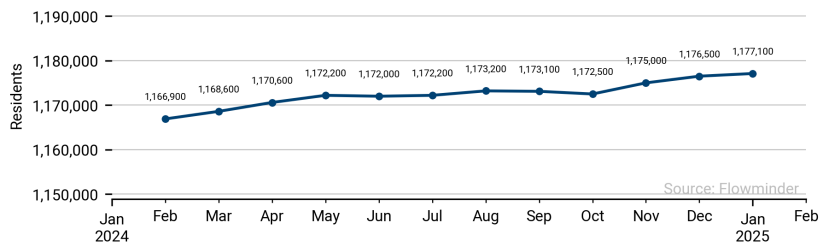
### Population trends per communal section in Nippes from 1 Feb 2024 to 31 Jan 2025



These population estimates come from Call Detail Records (CDRs) (mobile phone usage data) and other datasets for reference and adjustments. The estimates provided are not survey estimates, key informant estimates or field observations. If you are unfamiliar with this data source please read our documentation which can be found at [www.flowminder.org](http://www.flowminder.org)

### Monthly estimated population in North (01 Feb 24 - 31 Jan 25)

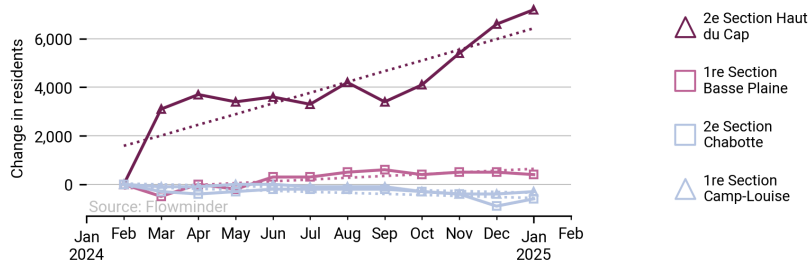
Sum of all communal sections incl. those with no CDRs



Source: Flowminder

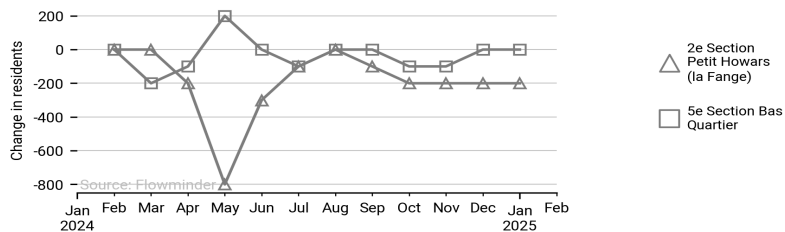
### Communal sections in North with largest modelled change in population (01 Feb 24 - 31 Jan 25)

Solid line: estimates. Dotted line: model.



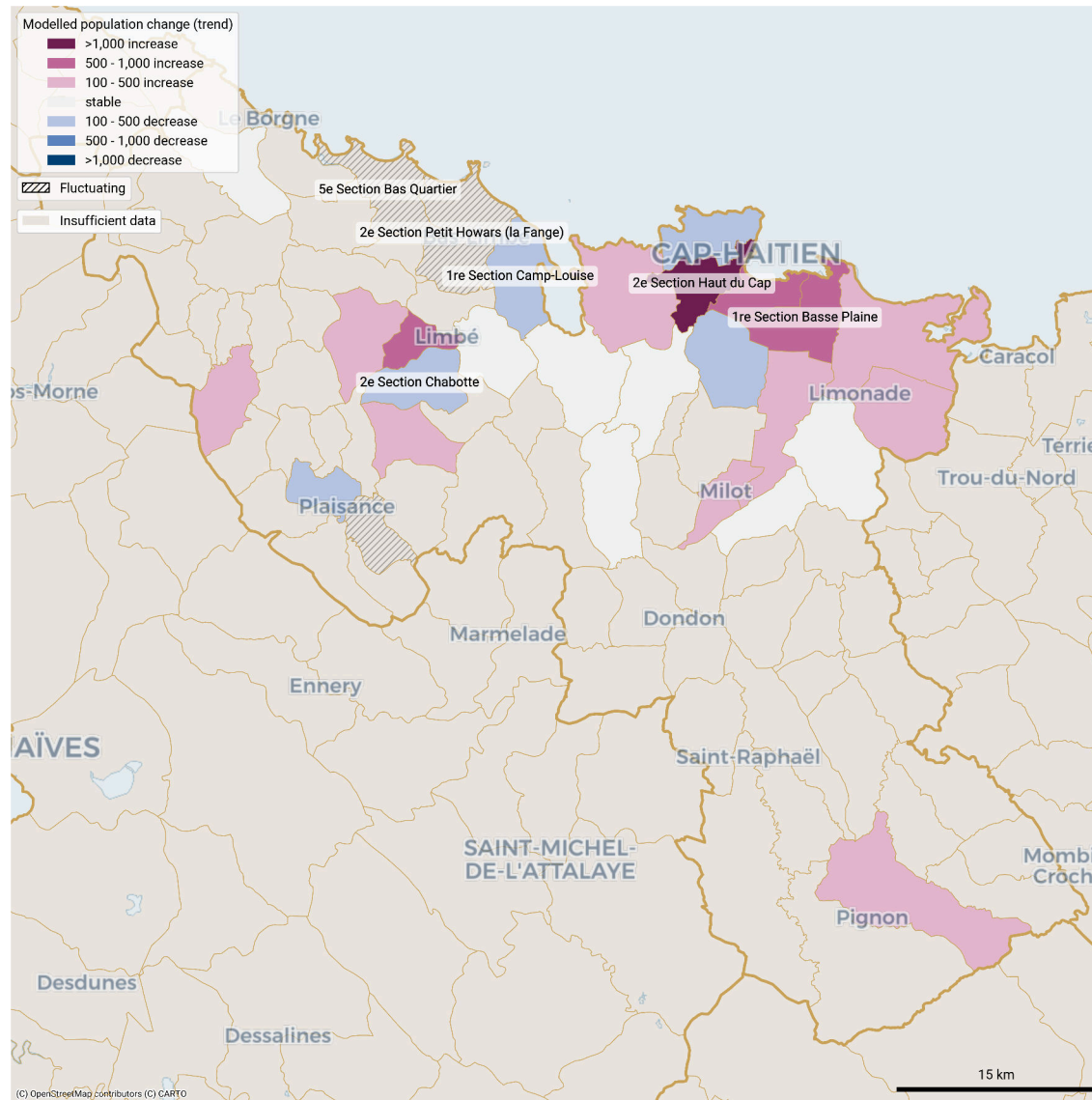
Source: Flowminder

### Largest month-to-month changes in resident population in fluctuating communal sections in North -department (01 Feb 24 - 31 Jan 25)

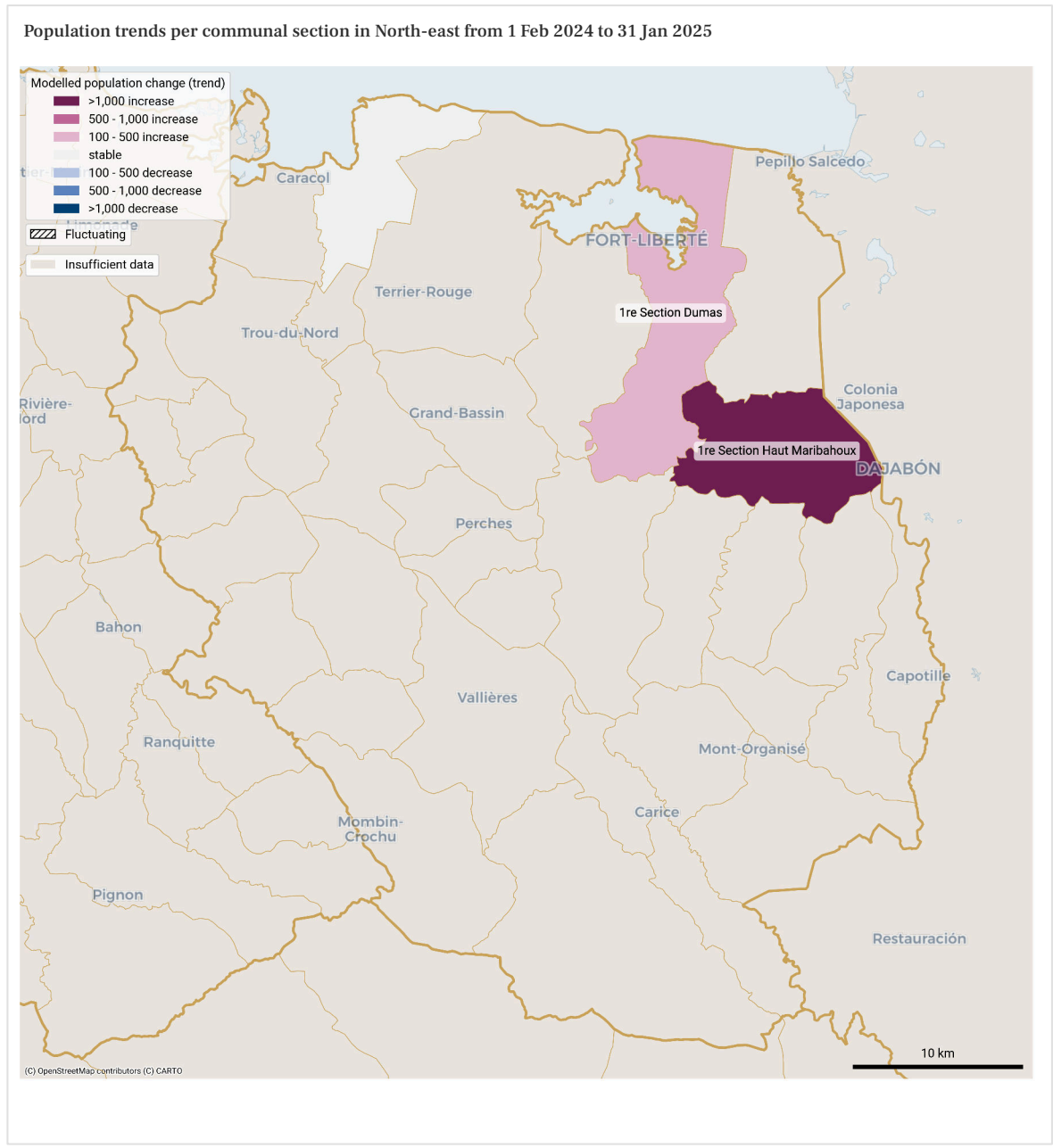
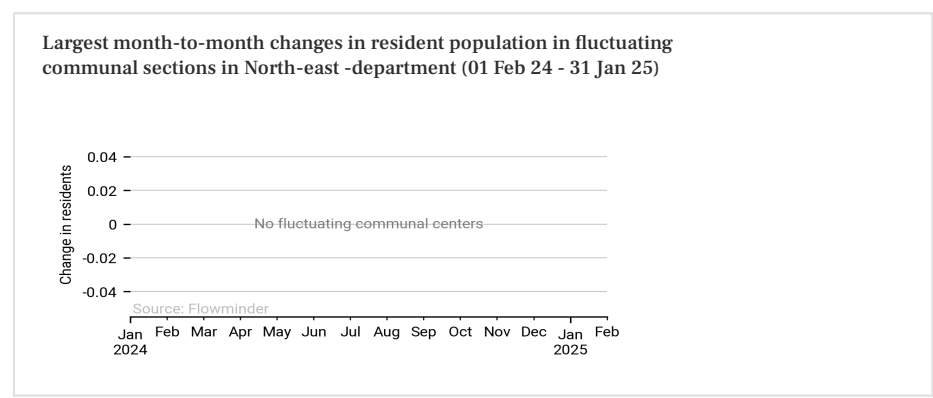
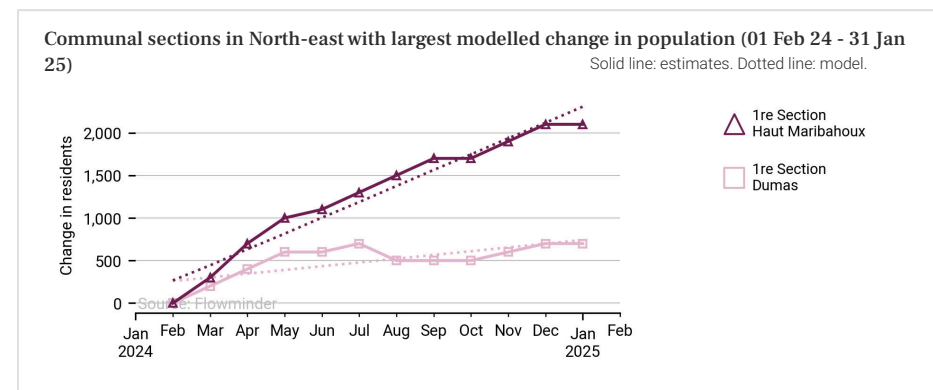
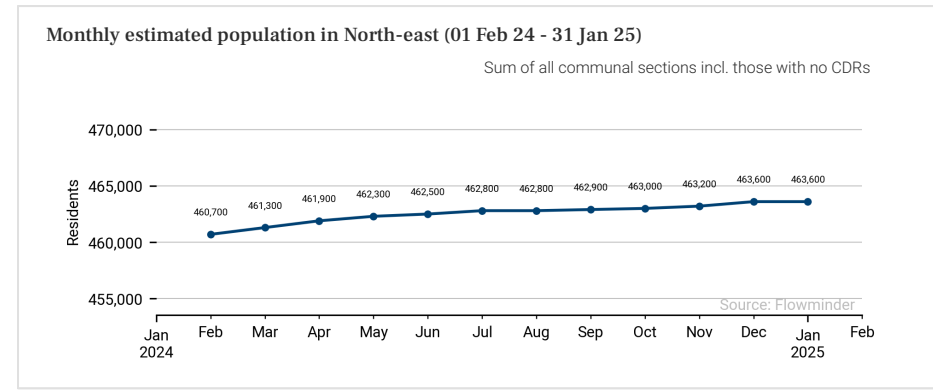


Source: Flowminder

### Population trends per communal section in North from 1 Feb 2024 to 31 Jan 2025



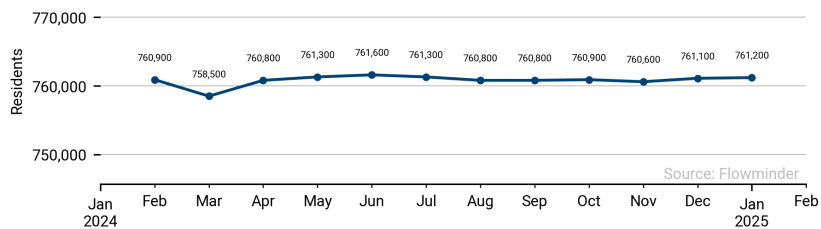
These population estimates come from Call Detail Records (CDRs) (mobile phone usage data) and other datasets for reference and adjustments. The estimates provided are not survey estimates, key informant estimates or field observations. If you are unfamiliar with this data source please read our documentation which can be found at [www.flowminder.org](http://www.flowminder.org)



These population estimates come from Call Detail Records (CDRs) (mobile phone usage data) and other datasets for reference and adjustments. The estimates provided are not survey estimates, key informant estimates or field observations. If you are unfamiliar with this data source please read our documentation which can be found at [www.flowminder.org](http://www.flowminder.org)

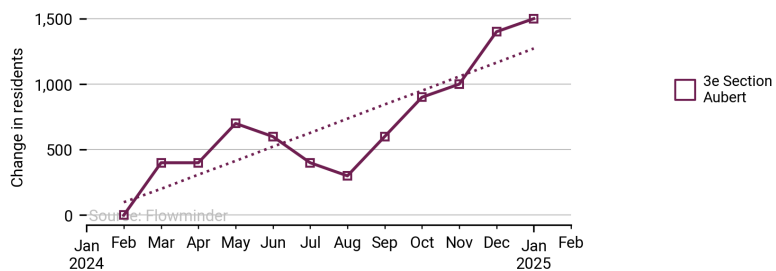
Monthly estimated population in North-west (01 Feb 24 - 31 Jan 25)

Sum of all communal sections incl. those with no CDRs

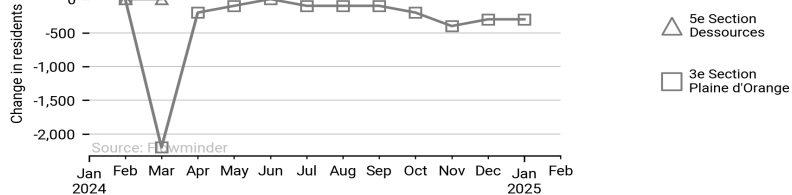


Communal sections in North-west with largest modelled change in population (01 Feb 24 - 31 Jan 25)

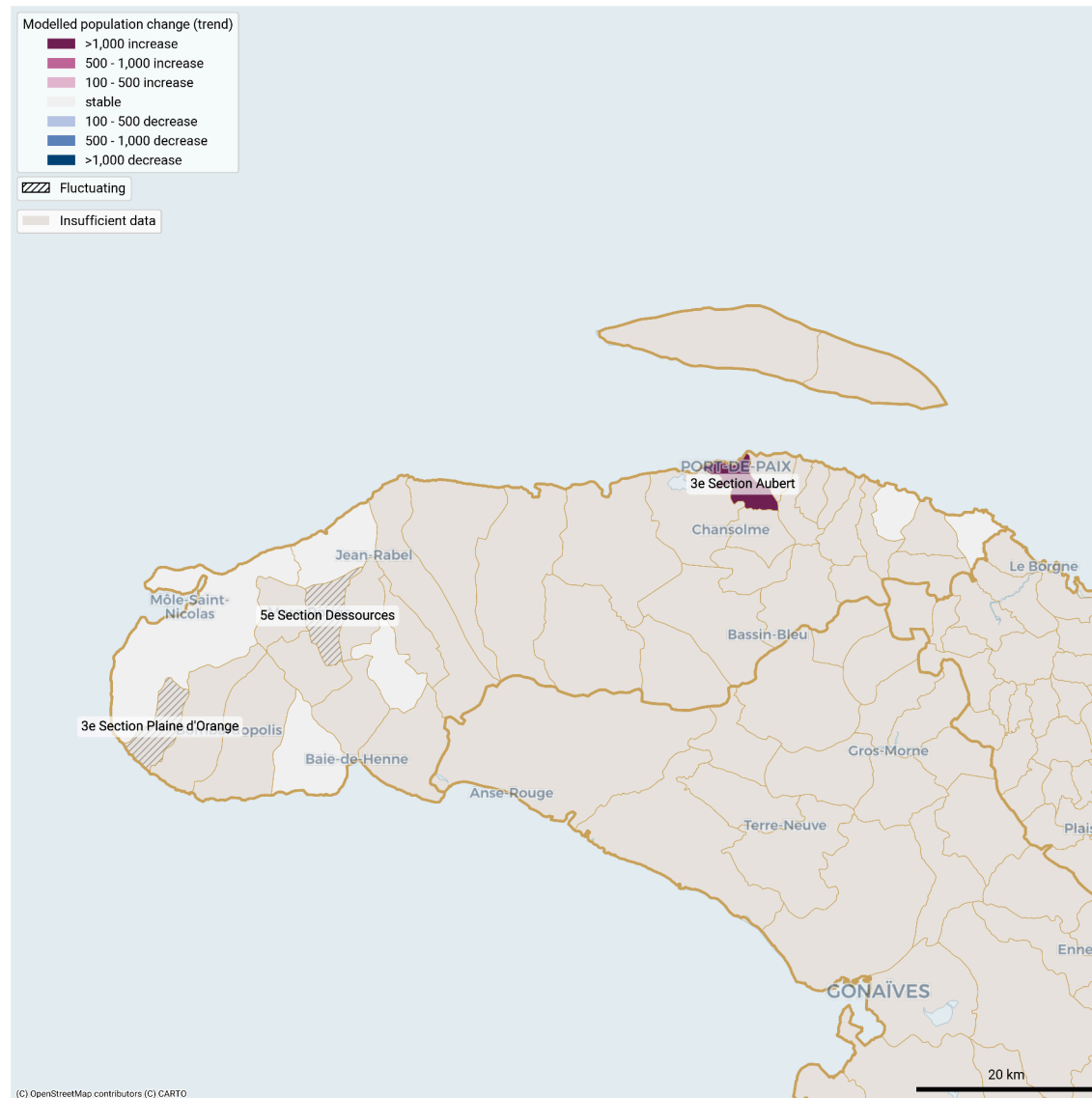
Solid line: estimates. Dotted line: model.



Largest month-to-month changes in resident population in fluctuating communal sections in North-west -department (01 Feb 24 - 31 Jan 25)



Population trends per communal section in North-west from 1 Feb 2024 to 31 Jan 2025



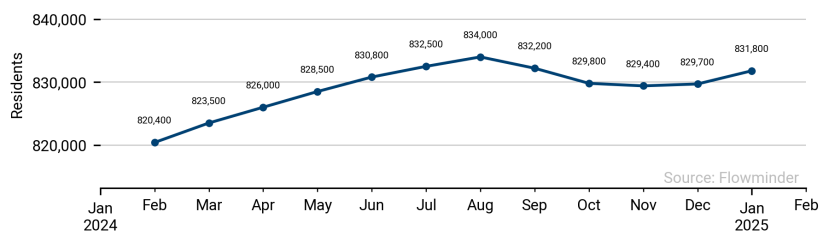
These population estimates come from Call Detail Records (CDRs) (mobile phone usage data) and other datasets for reference and adjustments. The estimates provided are not survey estimates, key informant estimates or field observations. If you are unfamiliar with this data source please read our documentation which can be found at [www.flowminder.org](http://www.flowminder.org)



Published: 24 Feb 2025

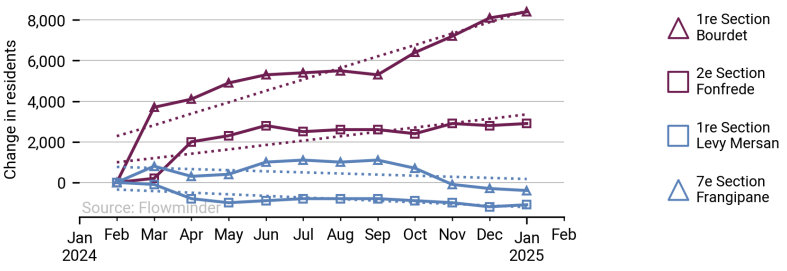
### Monthly estimated population in South (01 Feb 24 - 31 Jan 25)

Sum of all communal sections incl. those with no CDRs

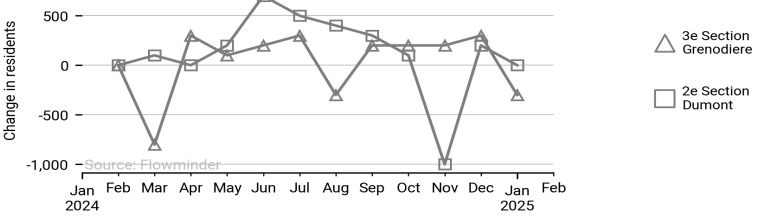


### Communal sections in South with largest modelled change in population (01 Feb 24 - 31 Jan 25)

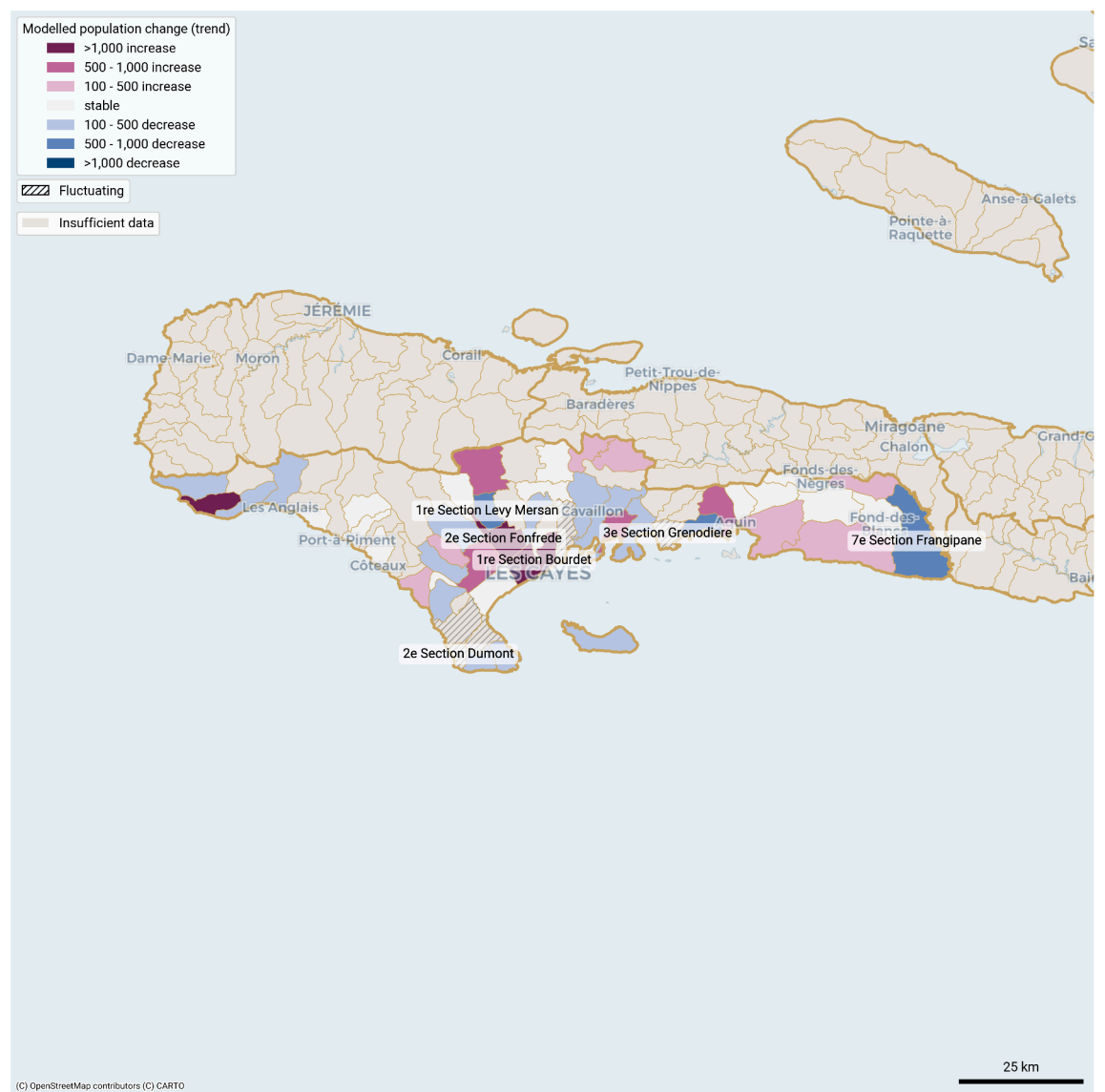
Solid line: estimates. Dotted line: model.



### Largest month-to-month changes in resident population in fluctuating communal sections in South -department (01 Feb 24 - 31 Jan 25)



### Population trends per communal section in South from 1 Feb 2024 to 31 Jan 2025

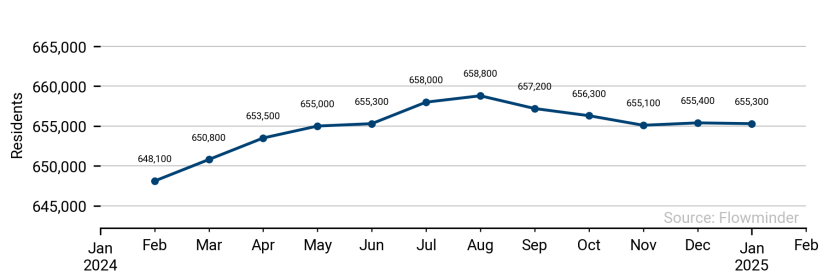


These population estimates come from Call Detail Records (CDRs) (mobile phone usage data) and other datasets for reference and adjustments. The estimates provided are not survey estimates, key informant estimates or field observations. If you are unfamiliar with this data source please read our documentation which can be found at [www.flowminder.org](http://www.flowminder.org)

Published: 24 Feb 2025

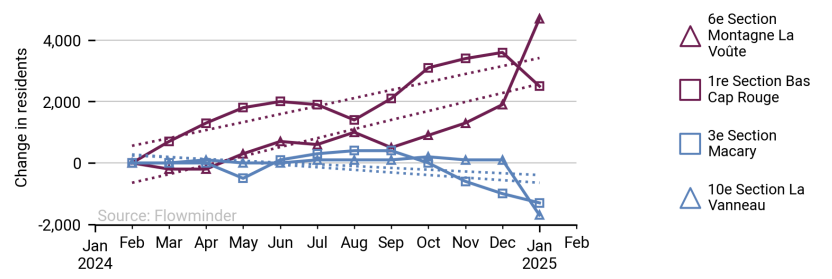
### Monthly estimated population in South-east (01 Feb 24 - 31 Jan 25)

Sum of all communal sections incl. those with no CDRs

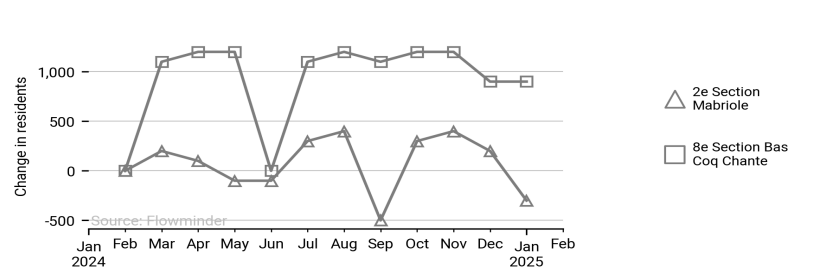


### Communal sections in South-east with largest modelled change in population (01 Feb 24 - 31 Jan 25)

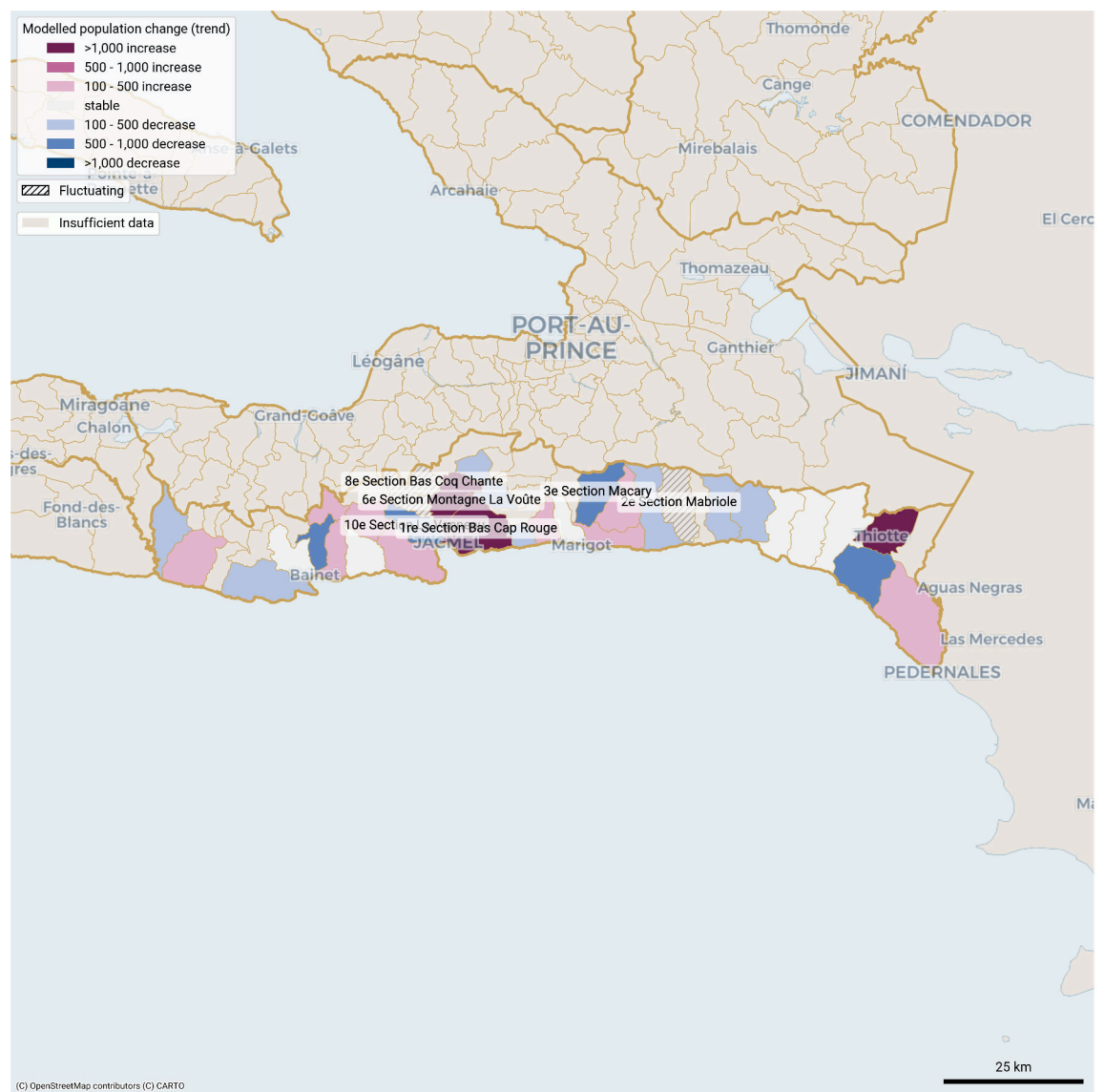
Solid line: estimates. Dotted line: model.



### Largest month-to-month changes in resident population in fluctuating communal sections in South-east -department (01 Feb 24 - 31 Jan 25)



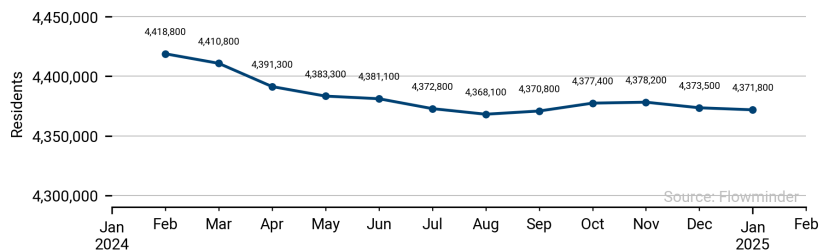
### Population trends per communal section in South-east from 1 Feb 2024 to 31 Jan 2025



These population estimates come from Call Detail Records (CDRs) (mobile phone usage data) and other datasets for reference and adjustments. The estimates provided are not survey estimates, key informant estimates or field observations. If you are unfamiliar with this data source please read our documentation which can be found at [www.flowminder.org](http://www.flowminder.org)

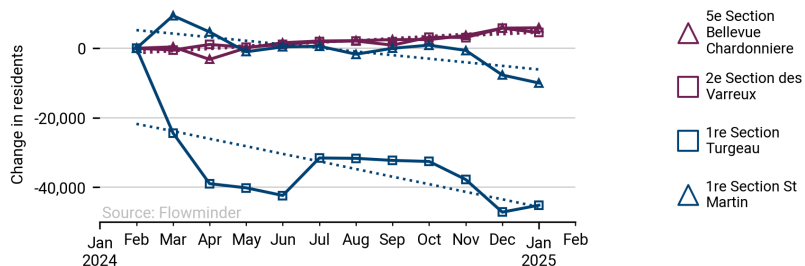
Monthly estimated population in West (01 Feb 24 - 31 Jan 25)

Sum of all communal sections incl. those with no CDRs

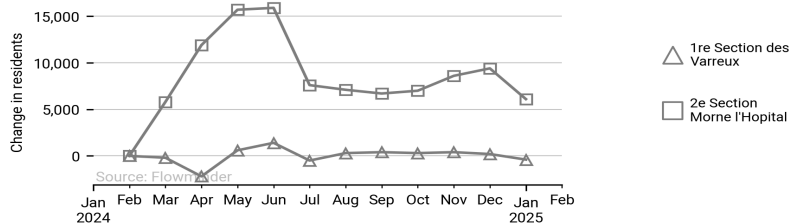


Communal sections in West with largest modelled change in population (01 Feb 24 - 31 Jan 25)

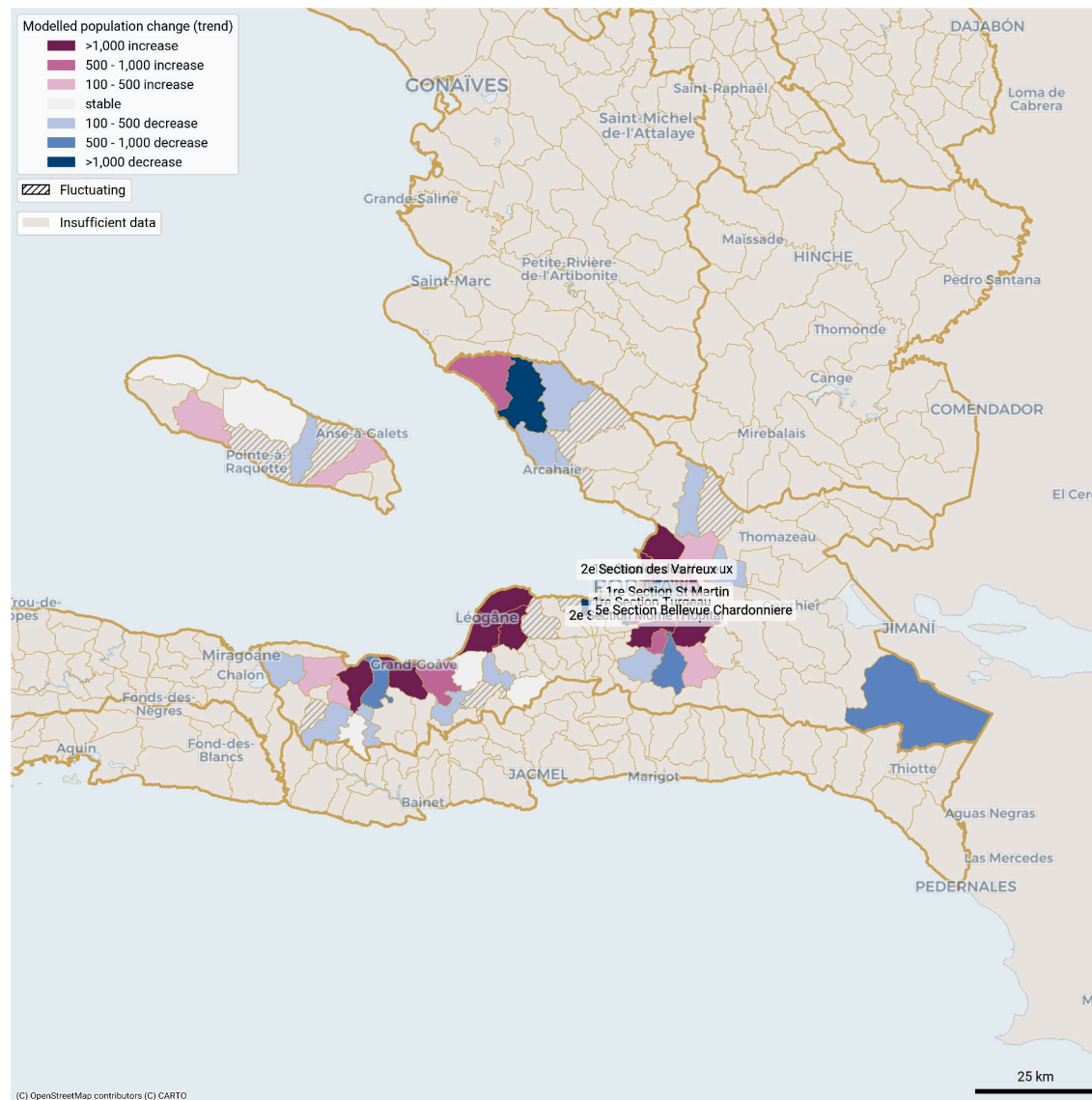
Solid line: estimates. Dotted line: model.



Largest month-to-month changes in resident population in fluctuating communal sections in West - department (01 Feb 24 - 31 Jan 25)



Population trends per communal section in West from 1 Feb 2024 to 31 Jan 2025



These population estimates come from Call Detail Records (CDRs) (mobile phone usage data) and other datasets for reference and adjustments. The estimates provided are not survey estimates, key informant estimates or field observations. If you are unfamiliar with this data source please read our documentation which can be found at [www.flowminder.org](http://www.flowminder.org)

# Preparedness | Mobility situation report - Haiti

## Part 3 | Communal sections with changes in population estimates

List of communal sections with estimated changes in population where |total change|&gt; 100 (01 Feb 24 - 31 Jan 25): increasing, decreasing or fluctuating

Department	Communal section	Population estimate Jan 2025	Trend type in the last 12 months	Modelled change over the last 12 months	Largest estimated month-to-month change
Artibonite	1re Section Pont Tamarin	248,500	Increasing	2,880	-
Artibonite	6e Section Charrette	116,300	Increasing	3,810	-
Artibonite	2e Section Bois Neuf	64,000	Decreasing	-1,780	-
Artibonite	5e Section Bocozelle	63,400	Fluctuating	-	500
Artibonite	3e Section Labady	62,300	Decreasing	-3,030	-
Artibonite	2e Section Fosse Naboth ou Duvalon	32,300	Increasing	770	-
Artibonite	4e Section Desarmes (Quartier de Desarmes)	29,800	Increasing	280	-
Artibonite	5e Section Bastien	27,700	Fluctuating	-	500
Artibonite	1re Section Deluge	21,400	Decreasing	-880	-
Artibonite	2e Section Bossous	18,400	Decreasing	-1,640	-
Artibonite	4e Section Poteaux	15,200	Decreasing	-240	-
Artibonite	3e Section Guillaume Moge (Quartier de Desarmes)	13,200	Increasing	700	-
Artibonite	1re Section Martineau	11,900	Decreasing	-110	-
Centre	1re Section Juanaria	72,100	Increasing	1,450	-
Centre	1re Section Renthe Mathe	55,400	Increasing	900	-
Centre	4e Section Crete Brûlée	54,900	Increasing	1,970	-
Centre	2e Section Juampas	36,000	Increasing	780	-
Centre	1re Section Cabral	27,800	Fluctuating	-	100
Centre	2e Section Boucan Carre	22,100	Decreasing	-200	-
Centre	2e Section Sarazin	20,000	Increasing	200	-
Centre	1re Section Canot ou Riviere Canot	18,100	Increasing	110	-
Centre	3e Section Grand Boucan	17,300	Fluctuating	-	500
GrandeAnse	9e Section Fond Rouge Torbeck	32,900	Increasing	2,180	-

Department	Communal section	Population estimate Jan 2025	Trend type in the last 12 months	Modelled change over the last 12 months	Largest estimated month-to-month change
GrandeAnse	8e Section Fond Rouge Dahere	30,200	Increasing	410	-
GrandeAnse	3e Section Haute Guinaudee	21,200	Increasing	710	-
GrandeAnse	1re Section Beaumont	20,500	Decreasing	-110	-
GrandeAnse	1re Section Basse Voldrogue	19,600	Increasing	530	-
GrandeAnse	3e Section Desormeau	16,900	Fluctuating	-	200
GrandeAnse	1re Section Anote ou 1re Tapion	15,100	Increasing	150	-
GrandeAnse	6e Section Îles Blanches	14,400	Increasing	110	-
GrandeAnse	1re Section Dejean	14,300	Increasing	510	-
GrandeAnse	1re Section Matador (Jorgue)	14,100	Increasing	160	-
GrandeAnse	1re Section Duquillon	12,700	Decreasing	-140	-
GrandeAnse	2e Section Balisiers	11,900	Fluctuating	-	100
GrandeAnse	2e Section Haute Voldrogue	11,200	Decreasing	-1,310	-
GrandeAnse	5e Section Baliverne	11,000	Fluctuating	-	200
GrandeAnse	2e Section Espere	11,000	Decreasing	-450	-
GrandeAnse	4e Section la Seringue	10,400	Decreasing	-160	-
GrandeAnse	1re Section Desormeau ou Bonbon	9,900	Increasing	380	-
GrandeAnse	7e Section Marfranc ou Grande Riviere	8,400	Decreasing	-210	-
GrandeAnse	3e Section Grand Vincent	8,200	Decreasing	-170	-
GrandeAnse	1re Section Carrefour Charles ou Jacqui	8,000	Fluctuating	-	200
GrandeAnse	4e Section les Gommiers	7,700	Increasing	210	-
GrandeAnse	3e Section Ilet a Pierre Joseph	7,500	Increasing	190	-
GrandeAnse	1re Section Bernagousse	6,500	Increasing	330	-
GrandeAnse	5e Section Duchity	5,900	Decreasing	-400	-

These population estimates come from Call Detail Records (CDRs) (mobile phone usage data) and other datasets for reference and adjustments. The estimates provided are not survey estimates, key informant estimates or field observations. If you are unfamiliar with this data source please read our documentation which can be found at [www.flowminder.org](http://www.flowminder.org)

List of communal sections with estimated changes in population where |total change|&gt; 100 (01 Feb 24 - 31 Jan 25): increasing, decreasing or fluctuating

Department	Communal section	Population estimate Jan 2025	Trend type in the last 12 months	Modelled change over the last 12 months	Largest estimated month-to-month change
GrandeAnse	6e Section Les Îles Cayemittes	5,400	Increasing	120	-
GrandeAnse	3e Section Garcasse	4,200	Decreasing	-390	-
Nippes	1re Section Chalon	44,000	Increasing	2,820	-
Nippes	2e Section Grande-Riviere-Joly	18,400	Increasing	540	-
Nippes	2e Section Tiby	14,700	Increasing	710	-
Nippes	1re Section Fond des Lianes	13,100	Increasing	180	-
Nippes	2e Section Fond-des-Negres ou Morne Brice	12,200	Increasing	820	-
Nippes	4e Section St-Michel	11,900	Fluctuating	-	400
Nippes	1re Section Salagnac	10,300	Increasing	290	-
Nippes	1re Section Baconnois-Grand-Fond	9,500	Increasing	200	-
Nippes	4e Section la Plaine	9,300	Decreasing	-130	-
Nippes	3e Section Fond Tortue	8,700	Increasing	380	-
Nippes	1re Section l'Asile ou Nan Paul	8,700	Fluctuating	-	1,800
Nippes	1re Section Baconnois-Barreau	8,200	Fluctuating	-	1,000
Nippes	2e Section Bezin II	8,200	Decreasing	-170	-
Nippes	3e Section Lieve ou Vigny	8,100	Fluctuating	-	1,900
Nippes	1er Section Bouzi	6,800	Decreasing	-140	-
Nippes	3e Section Arnaud (Morcou)	6,400	Fluctuating	-	300
Nippes	3e Section Saut du Baril	6,200	Increasing	1,040	-
Nippes	1re Section Grand-Boucan	3,500	Decreasing	-820	-
North	2e Section Haut du Cap	179,300	Increasing	4,840	-
North	3e Section Petit Anse	113,800	Increasing	580	-
North	5e Section Ravine Desroches	72,300	Increasing	510	-

Department	Communal section	Population estimate Jan 2025	Trend type in the last 12 months	Modelled change over the last 12 months	Largest estimated month-to-month change
North	1re Section Savannette	32,600	Increasing	330	-
North	3e Section Roucou	32,200	Increasing	400	-
North	7e Section Bassin	30,700	Decreasing	-110	-
North	1re Section Ballon	22,600	Increasing	120	-
North	1re Section Bande du Nord	21,200	Decreasing	-120	-
North	1re Section Morne Rouge	19,500	Increasing	450	-
North	2e Section Chabotte	18,900	Decreasing	-460	-
North	1re Section Basse Plaine	18,100	Increasing	220	-
North	2e Section Petit Howars (la Fange)	18,100	Fluctuating	-	500
North	2e Section Morne Pele	15,600	Increasing	270	-
North	1re Section Basse Plaine	15,400	Increasing	810	-
North	2e Section Bonnet a l'Eveque	14,400	Increasing	210	-
North	3e Section Genipailler	12,100	Decreasing	-230	-
North	3e Section Camp Coq	10,100	Increasing	160	-
North	1re Section Camp-Louise	9,000	Decreasing	-380	-
North	6e Section Bras Gauche	8,900	Increasing	190	-
North	5e Section Bas Quartier	8,700	Fluctuating	-	300
North	5e Section la Trouble	6,600	Fluctuating	-	100
North-East	1re Section Haut Marbahoux	107,200	Increasing	2,040	-
North-East	1re Section Dumas	30,000	Increasing	480	-
North-West	3e Section Aubert	107,400	Increasing	1,170	-
North-West	5e Section Dessources	23,800	Fluctuating	-	100
North-West	3e Section Plaine d'Orange	6,000	Fluctuating	-	2,000

These population estimates come from Call Detail Records (CDRs) (mobile phone usage data) and other datasets for reference and adjustments. The estimates provided are not survey estimates, key informant estimates or field observations. If you are unfamiliar with this data source please read our documentation which can be found at [www.flowminder.org](http://www.flowminder.org)

# Preparedness | Mobility situation report - Haiti

## Part 3 | Communal sections with changes in population estimates

List of communal sections with estimated changes in population where |total change|&gt; 100 (01 Feb 24 - 31 Jan 25): increasing, decreasing or fluctuating

Department	Communal section	Population estimate Jan 2025	Trend type in the last 12 months	Modelled change over the last 12 months	Largest estimated month-to-month change
South	1re Section Bourdet	94,200	Increasing	6,180	-
South	3e Section Solon	26,600	Decreasing	-380	-
South	3e Section Cosse	22,200	Decreasing	-130	-
South	2e Section Champlois	20,100	Increasing	730	-
South	1re Section Boileau	16,800	Decreasing	-160	-
South	3e Section Brodequin	16,100	Increasing	770	-
South	1re Section Levy Mersan	15,400	Decreasing	-870	-
South	2e Section Martineau	15,400	Decreasing	-340	-
South	1re Section Beaulieu	15,200	Increasing	480	-
South	1re Section Île a Vache	15,200	Decreasing	-500	-
South	2e Section Meloniere	15,100	Decreasing	-280	-
South	2e Section Fonfrede	14,800	Increasing	2,360	-
South	2e Section Berault	14,600	Increasing	560	-
South	2e Section Baie Dumesle	14,500	Decreasing	-370	-
South	2e Section Anse a Drick	13,800	Decreasing	-470	-
South	3e Section Grenadiere	12,900	Fluctuating	-	1,100
South	1re Section Barbois	12,100	Fluctuating	-	1,000
South	1re Section Macean	12,100	Increasing	340	-
South	1re Section Blactote	11,900	Increasing	1,090	-
South	5e Section Laroque	11,600	Increasing	400	-
South	6e Section Solon	11,000	Increasing	550	-
South	10e Section Guirand	9,900	Increasing	160	-
South	7e Section Frangipane	9,700	Decreasing	-590	-

Department	Communal section	Population estimate Jan 2025	Trend type in the last 12 months	Modelled change over the last 12 months	Largest estimated month-to-month change
South	1re Section Tapion	9,400	Fluctuating	-	1,000
South	3e Section Trichet	8,300	Decreasing	-410	-
South	4e Section Zanglais	8,100	Decreasing	-510	-
South	6e Section Boulmier	8,000	Fluctuating	-	900
South	2e Section Dumont	7,900	Fluctuating	-	1,200
South	4e Section Mare Henri	7,800	Increasing	170	-
South	5e Section Mercy	7,700	Decreasing	-300	-
South	1re Section Fonds Palmiste	6,900	Increasing	240	-
South	2e Section Debouchette	6,600	Decreasing	-290	-
South	4e Section Flamands	6,600	Increasing	240	-
South	3e Section Loby	5,600	Decreasing	-410	-
South	5e Section Sucrierie Henri	5,100	Decreasing	-170	-
South	4e Section Dalmette	3,600	Decreasing	-300	-
South-East	1re Section Bas Cap Rouge	83,200	Increasing	2,860	-
South-East	6e Section Montagne La Voûte	47,800	Increasing	3,220	-
South-East	1re Section Thiotte	27,000	Increasing	1,320	-
South-East	1re Section Boucan Guillaume	23,800	Increasing	500	-
South-East	11e Section La Montagne	20,400	Increasing	200	-
South-East	9e Section Bas des Gris Gris	17,600	Decreasing	-150	-
South-East	4e Section Fond Jean Noël	17,100	Increasing	170	-
South-East	5e Section Bel Air	16,600	Decreasing	-370	-
South-East	1re Section Gris Gris	16,400	Increasing	410	-
South-East	2e Section Gaillard	16,300	Increasing	500	-

These population estimates come from Call Detail Records (CDRs) (mobile phone usage data) and other datasets for reference and adjustments. The estimates provided are not survey estimates, key informant estimates or field observations. If you are unfamiliar with this data source please read our documentation which can be found at [www.flowgeek.org](http://www.flowgeek.org)

List of communal sections with estimated changes in population where |total change|&gt; 100 (01 Feb 24 - 31 Jan 25): increasing, decreasing or fluctuating

Department	Communal section	Population estimate Jan 2025	Trend type in the last 12 months	Modelled change over the last 12 months	Largest estimated month-to-month change
South-East	3e Section Macary	15,400	Decreasing	-920	-
South-East	6e Section Jamais Vu	15,100	Decreasing	-320	-
South-East	5e Section Savane Dubois	14,900	Increasing	390	-
South-East	1re Section La Vallee de Jacmel ou Muzac	14,800	Increasing	160	-
South-East	2e Section La Vallee de Baint ou Ternier	13,200	Increasing	230	-
South-East	1re Section Ravine Normande	12,100	Decreasing	-300	-
South-East	2e Section Mabriole	11,500	Fluctuating	-	800
South-East	4e Section Corail Lamothe	11,200	Decreasing	-290	-
South-East	3e Section Cochon Gras	11,100	Decreasing	-490	-
South-East	2e Section Trou Mahot	11,000	Increasing	110	-
South-East	1re Section Bais d'Orange	10,800	Decreasing	-260	-
South-East	8e Section Bas Coq Chante	10,500	Fluctuating	-	1,100
South-East	10e Section La Vanneau	9,400	Decreasing	-630	-
South-East	2e Section Pot de Chambre	8,800	Decreasing	-510	-
South-East	3e Section La Vallee de Baint	8,700	Decreasing	-580	-
South-East	9e Section Haut Coq Chante	6,100	Fluctuating	-	200
West	1re Section Turgeau	507,200	Decreasing	-23,930	-
West	1re Section St Martin	492,700	Decreasing	-11,330	-
West	3e Section Martissant	283,200	Increasing	4,130	-
West	10e Section Thor	270,100	Decreasing	-8,010	-
West	5e Section Bellevue Chardonniere	266,200	Increasing	6,780	-
West	11e Section Riviere Froide	217,300	Decreasing	-4,830	-
West	2e Section Morne l'Hopital	190,400	Fluctuating	-	6,100

Department	Communal section	Population estimate Jan 2025	Trend type in the last 12 months	Modelled change over the last 12 months	Largest estimated month-to-month change
West	11e Section Ravine Seche	131,700	Increasing	3,620	-
West	2e Section des Varreux	128,800	Increasing	250	-
West	3e Section Etang du Jonc	124,900	Increasing	3,950	-
West	1re Section Dessources	124,700	Increasing	3,280	-
West	3e Section Bellevue	117,100	Increasing	2,420	-
West	3e Section des Vases	108,200	Decreasing	-450	-
West	1re Section des Varreux	78,800	Increasing	1,440	-
West	1re Section Tete-a-Boeuf	57,800	Increasing	1,990	-
West	7e Section Gerard	55,900	Increasing	680	-
West	9e Section Bizoton	54,200	Decreasing	-1,980	-
West	2e Section Petite Riviere	53,900	Increasing	1,480	-
West	1re Section Fonds-Verrettes	53,500	Decreasing	-620	-
West	2e Section des Varreux	48,100	Increasing	5,150	-
West	3e Section Grande Rivere	40,200	Increasing	1,920	-
West	9e Section des Crochus	39,400	Decreasing	-310	-
West	1re Section des Varreux	36,800	Fluctuating	-	2,800
West	2e Section Petite Source	36,000	Fluctuating	-	1,600
West	4e Section Bellevue	35,200	Increasing	1,180	-
West	3e Section Sourcailles	34,200	Decreasing	-630	-
West	1re Section Bino	33,900	Increasing	350	-
West	1re Section Palma	26,400	Increasing	230	-
West	1re Section Montagne Noire	24,900	Increasing	830	-
West	2e Section Boucassin	23,500	Fluctuating	-	700

These population estimates come from Call Detail Records (CDRs) (mobile phone usage data) and other datasets for reference and adjustments. The estimates provided are not survey estimates, key informant estimates or field observations. If you are unfamiliar with this data source please read our documentation which can be found at [www.flowminder.org](http://www.flowminder.org)

List of communal sections with estimated changes in population where |total change|&gt; 100 (01 Feb 24 - 31 Jan 25): increasing, decreasing or fluctuating

Department	Communal section	Population estimate Jan 2025	Trend type in the last 12 months	Modelled change over the last 12 months	Largest estimated month-to-month change
West	3e Section Petit Boucan	22,300	Fluctuating	-	700
West	12e Section des Fourques	21,200	Decreasing	-850	-
West	4e Section Fond de Boudin	15,800	Fluctuating	-	1,100
West	5e Section Petit Bois	14,800	Decreasing	-200	-
West	4e Section Bellevue la Montagne	13,500	Increasing	2,940	-
West	4e Section des Crochus	11,600	Fluctuating	-	400
West	6e Section Matheux	8,900	Decreasing	-310	-
West	8e Section des Platons	8,600	Decreasing	-200	-
West	4e Section Montrouis	8,600	Increasing	720	-
West	2e Section Delatre	8,300	Decreasing	-190	-
West	5e Section Delices	8,200	Fluctuating	-	1,900
West	7e Section des Platons	7,200	Increasing	230	-
West	3e Section Trou Louis	5,900	Fluctuating	-	100
West	5e Section Grand Fond	5,700	Increasing	230	-
West	2e Section Bongars	5,400	Decreasing	-470	-
West	3e Section Grande Source	4,700	Decreasing	-270	-
West	2e Section Grand Vide	4,500	Increasing	200	-
West	5e Section Grande Colline	3,500	Decreasing	-110	-
West	2e Section Fonds Baptiste	3,500	Decreasing	-2,070	-
West	1re Section Boucassin	3,400	Decreasing	-390	-
West	10e Section des Palmes	3,000	Decreasing	-250	-
West	6e Section Trou Canari	3,000	Fluctuating	-	500
West	12e Section Cormiers	1,700	Decreasing	-130	-

Department	Communal section	Population estimate Jan 2025	Trend type in the last 12 months	Modelled change over the last 12 months	Largest estimated month-to-month change
------------	------------------	------------------------------	----------------------------------	---	---



### Authors And Funders

This report was authored by the Flowminder Foundation.

This work was made possible by funding from the UK Foreign, Commonwealth and Development Office (FCDO).

### Acknowledgements

This study was made possible thanks to the anonymised (aggregated) Call Detail Records provided by a mobile network operator in Haiti.

### How to use this report

We provide population estimates that take into account population movements within Haiti, per month and per communal section. The current crisis has led to large population movements, particularly of internally displaced people (e.g. [IDP4 round 2](#)), which can result in population statistics becoming outdated over a few months, and therefore impairing preparedness efforts (e.g. hazard population exposure estimation, needs assessment, service and contingency planning).

### Indicators presented

*Modelled change (trend):* the predicted population change for the reporting period from all 12 monthly estimates, which smoothes out monthly variations (linear regression).

*Estimated change:* the difference in the estimated population between the first and last months of the 12 month reporting period, which does not reflect any monthly variation within.

For communal sections with fewer than 10 months of resident estimates during the reporting period, we do not make a trend classification (insufficient data). For monthly population estimates at the department level, we carry forward the latest estimate to fill missing months in a communal section so that the aggregated changes at the department level are only based on observed CDR-derived mobility.

For communal sections with fast changing populations, we categorised them as 'increasing', 'decreasing', 'stable', when there is little to no change, or as 'fluctuating' when large month-to-month changes prevented us from detecting a trend. The fluctuation classification can indicate a data issue, as is likely the case for the pair of adjacent fluctuating sections highlighted in Nippes.

### Report's data

This report uses our v4.0 dataset ([documentation](#), [release notes](#)), available at <https://haiti.mobility-dashboard.org>.

*This report and its contents may only be shared with attribution to the Flowminder Foundation and Digicel Haiti. Adaptation is permitted as long as the changes are indicated and the Flowminder Foundation and Digicel Haiti are cited. Use of the report and its contents is limited to humanitarian and development purposes.*

*Disclaimer of Warranties and Limitation of Liability: To the extent possible, Flowminder and Digicel offer this report and its contents as-is and as-available, and make no representations or warranties of any kind concerning this report and its contents, whether express, implied, statutory, or other. This includes, without limitation, warranties of title, merchantability, fitness for a particular purpose, non-infringement, absence of latent or other defects, accuracy, or the presence or absence of errors, whether or not known or discoverable.*

*To the extent possible, in no event will Flowminder or Digicel be liable on any legal theory (including, without limitation, negligence) or otherwise for any direct, special, indirect, incidental, consequential, punitive, exemplary, or other losses, costs, expenses, or damages arising out of the use of the report or its contents, even if Flowminder or Digicel have been advised of the possibility of such losses, costs, expenses, or damages. The disclaimer of warranties and limitation of liability provided above shall be interpreted in a manner that, to the extent possible, most closely approximates an absolute disclaimer and waiver of all liability.*

### Data privacy & governance

No personal data, such as an individual's identity, demographics, location, contacts or movements, is made available to the government or any other third party at any time. All results produced by Flowminder are aggregated results (for example, subscriber density in a given municipality), which means that they do not contain any information about individual subscribers.

This data is fully anonymised. This approach complies with the European Union's General Data Protection Regulation (EU GDPR2016/679). Data is processed on a server installed behind the mobile network operator's firewall in Haiti, and no personal data leaves the operator's premises.

### Data considerations

The estimates shown are our best current assessment of movements. However, there are a number of uncertainties. The information should be interpreted together with other available evidence.

**For more information about our methods**, please read our Haiti Mobility Data Indicators documentation on residents and relocation at [here](#).

### Data Sources

Pseudonymised Call Detail Records: Digicel Haiti

CDR-based data products: Flowminder

Phone survey data: [HT PS 2023](#)

Field survey data: [MSNA 2022](#) and [MSNA 2024](#)

Population estimates: [UN data](#); IHSI 2015; and IHSI 2020.

**The following citation is required when using the data and information included in this report:**

**Flowminder Foundation, February 2025: Preparedness report, Mobility situation in Haiti from 01 February 2024 to 31 January 2025**

*For more information on the terms and conditions of Flowminder's reports and information products, please visit [flowminder.org](https://flowminder.org)*